



## Jackson County 2014 Weather Data

*62 Years of Weather Data Recorded at the UF/IFAS Marianna North Florida Research and Education Center*



**Doug Mayo**  
Jackson County Extension Director

1952-2008 Rainfall Data compiled by  
Ed Jowers, Emeritus County Extension Director

Data provided by Florida Automated Weather Station (FAWN)  
UF/IFAS North Florida Research and Education Center  
Greenwood, Florida



<http://fawn.ifas.ufl.edu/station.php?id=130>

Tower Name	Tower Number	Latitude Degree, Minutes	Latitude Degrees Minutes, Seconds	Latitude Degrees Decimal	Longitude Degree, Minutes	Longitude Degrees Minutes, Seconds	Longitude Degrees Decimal	Elevation Feet
Marianna	130.00	N 30°51.000'	N 30°50'00.00"	N 30.85000°	-85°09.910'	-85°09'54.60"	-85.16516°	115'

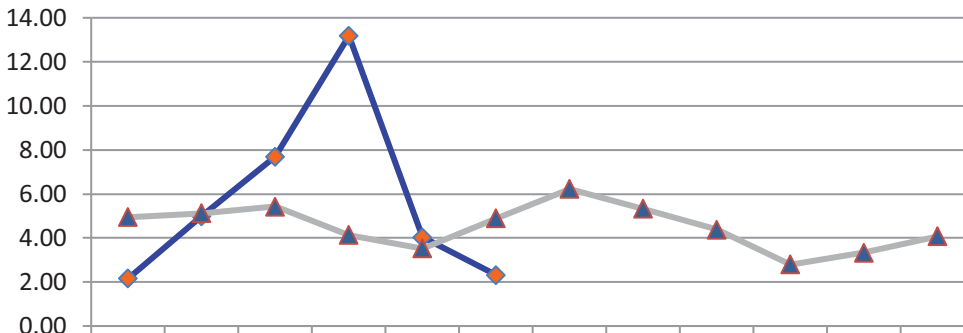
## 2014 Marianna UF/IFAS FAWN Weather Summary

Month	6' Air Temp			Soil Temp			Rainfall Inches	Dev from 61 yr Avg
	High	Low	Avg	High	Low	Avg		
January	69	17	43	53	31	41	2.2	-2.8
February	78	28	53	60	38	49	5.0	-0.1
March	79	32	56	66	41	54	7.7	2.3
April	87	39	66	75	50	62	13.2	9.1
May	94	50	73	87	58	72	4.0	0.5
June	95	67	79	89	70	78	2.3	-2.6
2014	95	17	62	89	31	59	34.4	6.3

Data: UF/IFAS Florida Automated Weather Network Marianna Station

Total days in 2014 <32°      17                      Total days in 2014 >95°      0

### Monthly Rainfall @ Marianna FAWN



	JAN	FEB	MAR	APR	MAY	JUNE	JULY	AUG	SEP	OCT	NOV	DEC
2014	2.15	4.99	7.70	13.18	4.03	2.32						
61 yr avg	4.95	5.12	5.43	4.13	3.52	4.89	6.22	5.33	4.38	2.79	3.34	4.08

◆ 2014    ▲ 61 yr avg

# January Daily Weather Data

Date	Temperature						Precipitation				
	Air Temp 6 ft			Soil Temp 4 inch			Rain	Evapo Trans			
	Avg	Min	Max	Avg	Min	Max	Inches	Inches			
1-Jan-14	48	44	52	46	44	47	0.06	0.04			
2-Jan-14	50	35	56	46	43	48	0.29	0.05			
3-Jan-14	32	26	41	40	37	43	0.00	0.03			
4-Jan-14	39	26	47	39	36	42	0.00	0.04			
5-Jan-14	55	42	66	44	41	48	0.00	0.05			
6-Jan-14	36	23	62	43	36	48	0.23	0.06			
7-Jan-14	22	17	29	34	32	37	0.00	0.02			
8-Jan-14	33	19	45	35	31	39	0.00	0.03			
9-Jan-14	47	40	57	40	37	42	0.03	0.04			
10-Jan-14	56	50	64	45	42	47	0.05	0.05			
11-Jan-14	63	52	68	50	48	53	0.41	0.05			
12-Jan-14	50	40	63	47	43	51	0.00	0.04			
13-Jan-14	52	40	64	47	43	50	0.69	0.05			
14-Jan-14	55	40	63	49	46	53	0.02	0.05			
15-Jan-14	43	35	55	45	42	49	0.00	0.04			
16-Jan-14	38	27	49	41	37	45	0.02	0.03			
17-Jan-14	47	33	61	41	37	46	0.00	0.05			
18-Jan-14	39	26	51	39	36	43	0.00	0.04			
19-Jan-14	47	36	59	41	37	46	0.07	0.05			
20-Jan-14	48	31	65	42	37	47	0.00	0.05			
21-Jan-14	48	33	59	43	40	47	0.00	0.05			
22-Jan-14	33	26	44	39	35	43	0.00	0.04			
23-Jan-14	37	27	48	39	36	44	0.00	0.04			
24-Jan-14	35	29	38	39	36	42	0.00	0.03			
25-Jan-14	42	34	53	39	37	42	0.00	0.05			
26-Jan-14	46	32	59	40	36	44	0.00	0.05			
27-Jan-14	57	48	69	45	41	49	0.07	0.06			
28-Jan-14	38	30	53	42	38	47	0.20	0.05			
29-Jan-14	25	22	30	35	32	38	0.00	0.03			
30-Jan-14	32	22	40	35	32	39	0.01	0.04			
31-Jan-14	39	27	55	37	33	42	0.00	0.05			
<b>High</b>			<b>69</b>			<b>53</b>					
<b>Low</b>		<b>17</b>			<b>31</b>						
<b>Average</b>	<b>43</b>	33	54	<b>41</b>	38	45					
Days over 95 <sup>0</sup>  Days below 32 <sup>0</sup>				<b>Total for Month</b>			<b>2.15</b>	1.35	<b>Year Cumulative</b> <b>Rain</b> <b>ET</b> 2.2      1.4 13.0 5.0 -2.8  0.8		
				<b>Number of Rain Days</b>			13.00				
				<b>Historic Average</b>			4.95				
				<b>Deviation from Average</b>			-2.80				
				<b>Net Gain/loss (Rain - ET)</b>						<b>0.8</b>	

# February Daily Weather Data

Date	Temperature						Precipitation					
	Air Temp 6 ft			Soil Temp 4 inch			Rain	Evapo Trans				
	Avg	Min	Max	Avg	Min	Max	Inches	Inches				
1-Feb-14	52	40	64	42	38	47	0.00	0.06				
2-Feb-14	62	53	74	48	44	53	0.01	0.07				
3-Feb-14	62	56	67	51	50	53	0.09	0.05				
4-Feb-14	63	55	76	52	50	56	0.00	0.07				
5-Feb-14	59	39	70	54	48	57	0.01	0.08				
6-Feb-14	37	34	40	45	43	48	0.04	0.04				
7-Feb-14	43	32	56	44	39	50	0.00	0.06				
8-Feb-14	50	43	63	47	44	53	0.16	0.07				
9-Feb-14	52	38	67	48	43	54	0.00	0.07				
10-Feb-14	56	41	70	49	44	54	0.00	0.07				
11-Feb-14	53	43	61	51	49	53	0.08	0.06				
12-Feb-14	40	36	43	44	41	48	1.77	0.04				
13-Feb-14	42	36	55	42	39	46	0.00	0.07				
14-Feb-14	48	32	60	43	38	48	0.00	0.07				
15-Feb-14	47	37	57	45	41	50	0.09	0.07				
16-Feb-14	49	33	66	45	39	52	0.00	0.08				
17-Feb-14	56	39	69	48	43	53	0.00	0.08				
18-Feb-14	63	54	75	52	48	56	0.00	0.08				
19-Feb-14	64	51	77	54	49	60	0.00	0.09				
20-Feb-14	67	58	78	56	53	60	0.00	0.09				
21-Feb-14	61	48	70	57	53	60	0.90	0.09				
22-Feb-14	55	42	68	53	48	58	0.00	0.08				
23-Feb-14	55	46	61	51	49	52	1.04	0.05				
24-Feb-14	63	56	72	55	52	60	0.00	0.09				
25-Feb-14	62	49	75	56	51	60	0.00	0.09				
26-Feb-14	49	40	58	52	47	55	0.80	0.06				
27-Feb-14	41	33	52	47	43	51	0.00	0.07				
28-Feb-14	45	28	61	47	40	53	0.00	0.07				
<b>High</b>			<b>78</b>			<b>60</b>						
<b>Low</b>		<b>28</b>			<b>38</b>							
<b>Average</b>	<b>53</b>	43	65	<b>49</b>	45	54						
Days over 95 <sup>o</sup>	0			<b>Total for Month</b>			<b>4.99</b>	1.97	7.1	3.3		
				<b>Number of Rain Days</b>			11.00			24.0		
Days below 32 <sup>o</sup>	2			<b>59 year Average</b>			5.12			10.1		
				<b>Deviation from Average</b>			-0.13			-2.9		
				<b>Net Gain/loss (Rain - ET)</b>						<b>3.02</b>		

<b>Year Cumulative</b>	
<b>Rain</b>	<b>ET</b>
7.1	3.3
24.0	
10.1	
-2.9	
	3.8

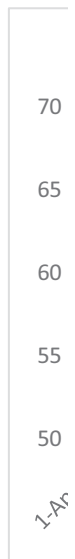
## March Daily Weather Data

Date	Temperature						Precipitation		
	Air Temp 6 ft			Soil Temp 4 inch			Rain	Evapo Trans	
	Avg	Min	Max	Avg	Min	Max	Inches	Inches	
1-Mar-14	54	40	70	50	44	57	0.00	0.09	
2-Mar-14	59	42	76	52	46	59	0.00	0.1	
3-Mar-14	58	41	72	53	50	56	0.00	0.09	
4-Mar-14	43	39	46	48	47	50	0.00	0.04	
5-Mar-14	46	40	56	48	45	53	0.20	0.07	
6-Mar-14	45	38	49	47	44	49	0.84	0.05	
7-Mar-14	44	38	54	45	42	48	0.01	0.06	
8-Mar-14	52	36	67	48	41	56	0.00	0.09	
9-Mar-14	58	45	72	52	46	58	0.00	0.1	
10-Mar-14	63	47	77	54	48	61	0.00	0.11	
11-Mar-14	63	54	74	56	52	60	0.17	0.09	
12-Mar-14	62	46	73	57	52	61	0.00	0.09	
13-Mar-14	48	37	60	51	47	57	0.00	0.09	
14-Mar-14	52	36	69	51	46	58	0.00	0.09	
15-Mar-14	58	43	69	53	48	56	0.00	0.08	
16-Mar-14	60	57	69	52	52	53	3.69	0.05	
17-Mar-14	59	52	63	53	51	54	0.47	0.06	
18-Mar-14	52	49	58	52	50	55	0.21	0.07	
19-Mar-14	59	51	72	55	50	62	0.00	0.11	
20-Mar-14	61	48	75	57	51	63	0.00	0.11	
21-Mar-14	62	46	75	58	52	64	0.00	0.11	
22-Mar-14	64	54	78	60	55	66	0.00	0.12	
23-Mar-14	62	55	72	59	57	63	0.03	0.09	
24-Mar-14	59	51	65	58	55	62	0.00	0.09	
25-Mar-14	56	44	62	58	54	62	0.00	0.1	
26-Mar-14	46	32	56	54	49	60	0.00	0.08	
27-Mar-14	56	41	68	55	50	60	0.00	0.1	
28-Mar-14	60	58	62	55	54	56	1.57	0.04	
29-Mar-14	63	54	72	57	53	61	0.51	0.11	
30-Mar-14	55	45	69	56	50	62	0.00	0.12	
31-Mar-14	60	41	79	57	50	65	0.00	0.12	
<b>High</b>			<b>79</b>			<b>66</b>			
<b>Low</b>		<b>32</b>			<b>41</b>				
<b>Average</b>	<b>56</b>	<b>45</b>	<b>67</b>	<b>54</b>	<b>49</b>	<b>58</b>			
Days over 95 <sup>o</sup>				0			<b>Total for Month</b>	<b>7.70</b>	2.72
Days below 32 <sup>o</sup>				0			<b>Number of Rain Days</b>	10.00	
							<b>59 year Average</b>	5.43	
							<b>Deviation from Average</b>	2.27	
							<b>Net Gain/loss (Rain - ET)</b>		<b>4.98</b>

<b>Year Cumulative</b>	
<b>Rain</b>	<b>ET</b>
14.8	6.0
34.0	
15.5	
-0.7	
	8.8

# April Daily Weather Data

Date	Temperature						Precipitation	
	Air Temp 6 ft			Soil Temp 4 inch			Rain	Evapo Trans
	Avg	Min	Max	Avg	Min	Max	Inches	Inches
1-Apr-14	61	43	81	59	53	66	0.00	0.13
2-Apr-14	63	48	81	60	55	66	0.00	0.12
3-Apr-14	69	58	82	61	57	67	0.00	0.14
4-Apr-14	71	62	81	63	59	67	0.00	0.12
5-Apr-14	69	63	78	64	60	67	0.12	0.1
6-Apr-14	67	65	70	62	61	64	0.03	0.06
7-Apr-14	69	63	72	61	60	62	2.54	0.06
8-Apr-14	59	52	67	60	56	65	0.00	0.12
9-Apr-14	58	49	71	59	55	64	0.00	0.13
10-Apr-14	61	45	76	60	54	67	0.00	0.13
11-Apr-14	64	49	77	61	56	66	0.00	0.12
12-Apr-14	68	53	83	63	57	69	0.00	0.14
13-Apr-14	70	59	82	64	59	69	0.00	0.14
14-Apr-14	73	64	81	65	61	68	1.43	0.12
15-Apr-14	56	45	66	59	54	64	1.66	0.08
16-Apr-14	52	39	64	57	50	63	0.00	0.12
17-Apr-14	60	50	70	59	54	64	0.03	0.12
18-Apr-14	56	54	60	56	54	59	3.43	0.05
19-Apr-14	58	53	64	55	53	57	0.01	0.07
20-Apr-14	57	53	63	55	54	57	0.00	0.07
21-Apr-14	64	50	78	59	51	67	0.00	0.14
22-Apr-14	68	55	80	62	56	68	0.00	0.14
23-Apr-14	71	60	83	65	59	71	0.00	0.15
24-Apr-14	72	63	85	67	62	73	0.00	0.15
25-Apr-14	73	65	83	67	63	71	0.00	0.13
26-Apr-14	74	64	85	69	64	75	0.00	0.16
27-Apr-14	73	64	83	69	66	73	0.00	0.13
28-Apr-14	77	66	87	70	66	74	0.00	0.14
29-Apr-14	69	64	74	66	64	70	1.49	0.06
30-Apr-14	67	65	73	62	61	64	2.44	0.06
<b>High</b>			<b>87</b>			<b>75</b>		
<b>Low</b>		<b>39</b>			<b>50</b>			
<b>Average</b>	<b>66</b>	<b>56</b>	<b>76</b>	<b>62</b>	<b>58</b>	<b>67</b>		
Days over 95 <sup>o</sup>	0			<b>Total for Month</b>			<b>13.18</b>	3.40
				<b>Number of Rain Days</b>			10.00	
Days below 32 <sup>o</sup>	0			<b>59 year Average</b>			4.13	
				<b>Deviation from Average</b>			9.05	
				<b>Net Gain/loss (Rain - ET)</b>				<b>9.78</b>



<b>Year Cumulative</b>	
<b>Rain</b>	<b>ET</b>
28.0	9.4
44.0	
19.6	
8.4	
	18.6

## May Daily Weather Data

Temperature							Precipitation	
Date	Air Temp 6 ft			Soil Temp 4 inch			Rain	Evapo Trans
	Avg	Min	Max	Avg	Min	Max	Inches	Inches
1-May-14	59	56	68	61	59	62	1.01	0.07
2-May-14	62	56	68	61	58	64	0.06	0.09
3-May-14	66	58	77	64	58	70	0.00	0.15
4-May-14	71	56	85	66	59	73	0.00	0.17
5-May-14	73	58	88	69	62	76	0.00	0.17
6-May-14	71	58	87	70	64	77	0.00	0.17
7-May-14	73	57	87	71	65	77	0.00	0.16
8-May-14	76	63	88	72	67	78	0.00	0.17
9-May-14	76	69	83	72	69	74	0.00	0.13
10-May-14	74	68	81	70	68	72	0.00	0.09
11-May-14	75	70	85	71	68	77	0.07	0.13
12-May-14	76	68	86	72	68	77	0.00	0.14
13-May-14	77	67	87	73	68	79	0.00	0.17
14-May-14	76	67	87	74	70	79	0.56	0.15
15-May-14	63	54	68	69	65	71	0.02	0.1
16-May-14	64	50	76	67	61	74	0.00	0.15
17-May-14	69	54	81	70	63	77	0.00	0.16
18-May-14	73	60	84	72	66	80	0.00	0.17
19-May-14	73	63	85	73	68	79	0.00	0.16
20-May-14	75	64	87	74	69	80	0.00	0.16
21-May-14	76	65	87	75	70	81	0.00	0.17
22-May-14	77	64	90	76	70	83	0.02	0.19
23-May-14	79	66	92	77	71	85	0.00	0.19
24-May-14	80	68	92	78	73	85	0.00	0.18
25-May-14	79	68	94	78	74	87	1.21	0.18
26-May-14	75	68	89	75	71	82	0.24	0.16
27-May-14	75	70	86	74	72	79	0.68	0.12
28-May-14	78	70	89	75	71	81	0.00	0.17
29-May-14	74	70	83	74	72	76	0.14	0.11
30-May-14	74	70	84	73	71	78	0.02	0.12
31-May-14	77	70	86	74	71	79	0.00	0.13
<b>High</b>			<b>94</b>			<b>87</b>		
<b>Low</b>		<b>50</b>			<b>58</b>			
<b>Average</b>	<b>73</b>	63	84	<b>72</b>	67	77		
				<b>Total for Month</b>			<b>4.03</b>	4.58
Days over 95 <sup>o</sup>				0			<b>Number of Rain Days</b>	11.00
Days of 100 <sup>o</sup>				0			<b>59 year Average</b>	3.52
Days below 32 <sup>o</sup>				0			<b>Deviation from Average</b>	0.51
				<b>Net Gain/loss (Rain - ET)</b>				<b>-0.55</b>

<b>Year Cumulative</b>	
<b>Rain</b>	<b>ET</b>
32.1	14.0
55.0	
23.2	
8.9	
	18.0

## June Daily Weather Data

Temperature							Precipitation	
Date	Air Temp 6 ft			Soil Temp 4 inch			Rain	Evapo Trans
	Avg	Min	Max	Avg	Min	Max	Inches	Inches
1-Jun-14	76	70	85	74	71	78	0.09	0.14
2-Jun-14	76	69	83	73	70	76	0.00	0.13
3-Jun-14	76	70	83	74	70	77	0.00	0.13
4-Jun-14	78	67	87	75	70	80	0.00	0.16
5-Jun-14	80	69	90	77	71	83	0.00	0.19
6-Jun-14	80	70	92	79	73	85	0.31	0.19
7-Jun-14	78	68	88	77	73	82	0.00	0.15
8-Jun-14	78	70	90	78	75	83	0.03	N/A
9-Jun-14	81	70	91	78	73	85	0.00	0.19
10-Jun-14	81	72	91	79	75	84	0.00	0.19
11-Jun-14	77	71	84	78	75	81	0.00	0.15
12-Jun-14	80	70	89	78	73	84	0.00	0.18
13-Jun-14	77	71	85	77	74	80	0.19	N/A
14-Jun-14	79	69	89	78	72	85	0.00	N/A
15-Jun-14	79	70	90	79	74	85	0.00	N/A
16-Jun-14	80	71	93	80	75	88	0.66	N/A
17-Jun-14	81	71	93	80	74	87	0.00	0.18
18-Jun-14	82	71	94	81	75	87	0.00	0.2
19-Jun-14	80	73	93	80	76	87	0.16	0.17
20-Jun-14	78	71	94	79	74	87	0.01	0.17
21-Jun-14	81	71	93	79	74	85	0.01	0.17
22-Jun-14	78	70	91	79	75	85	0.76	0.16
23-Jun-14	75	70	88	77	73	84	0.01	0.15
24-Jun-14	78	72	88	77	74	82	0.08	0.15
25-Jun-14	79	72	89	78	74	83	0.01	0.17
26-Jun-14	81	74	89	78	75	83	0.00	0.15
27-Jun-14	82	72	93	80	75	86	0.00	0.19
28-Jun-14	81	74	92	80	76	85	0.00	0.17
29-Jun-14	84	74	95	82	76	88	0.00	0.2
30-Jun-14	84	74	95	83	78	89	0.00	0.19
<b>High</b>			<b>95</b>			<b>89</b>		
<b>Low</b>		<b>67</b>			<b>70</b>			
<b>Average</b>	<b>79</b>	<b>71</b>	<b>90</b>	<b>78</b>	<b>74</b>	<b>84</b>		
				<b>Total for Month</b>			<b>2.32</b>	4.22
Days over 95 <sup>o</sup>				<b>Number of Rain Days</b>			12.00	
Days of 100 <sup>o</sup>				<b>59 year Average</b>			4.89	
Days below 32 <sup>o</sup>				<b>Deviation from Average</b>			-2.57	
				<b>Net Gain/loss (Rain - ET)</b>				<b>-1.9</b>

<b>Year Cumulative</b>	
<b>Rain</b>	<b>ET</b>
34.4	18.2
67.0	
28.1	
6.3	
	16.1

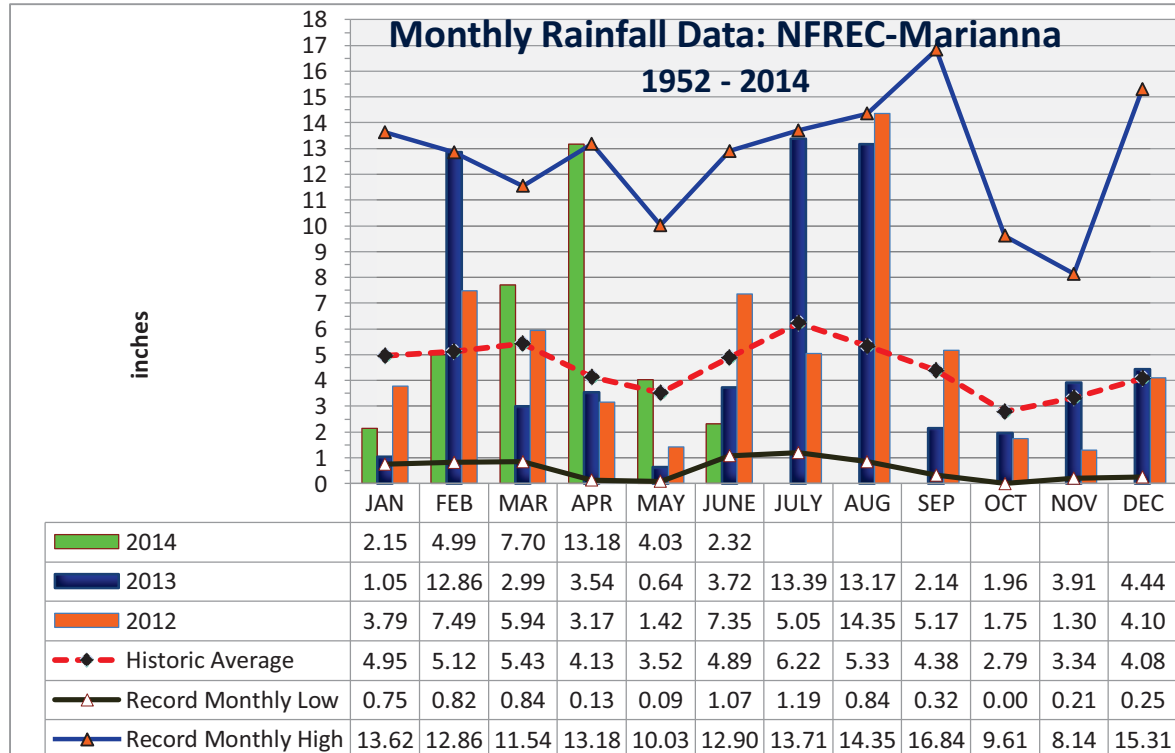


**Jackson County**  
**Monthly Total Rainfall, 1952 - 2012**  
No FL Research & Education Cntr, Marianna, FL



YEAR	JAN	FEB	MAR	APR	MAY	JUNE	JULY	AUG	SEP	OCT	NOV	DEC	TOTAL
1952	1.14	8.88	4.48	2.11	5.13	1.12	5.95	8.81	3.09	0.65	3.26	3.42	48.04
1953	4.84	7.26	3.03	8.43	2.43	3.97	6.84	1.63	6.33	0.65	4.09	<u>15.31</u>	64.81
1954	1.33	3.49	2.62	2.58	1.96	3.46	3.28	2.84	1.72	1.30	2.66	1.44	<b>28.68</b>
1955	3.66	1.83	<b>0.84</b>	5.80	3.03	1.62	6.75	3.75	2.44	2.10	0.72	0.77	33.31
1956	3.59	5.18	3.77	2.04	4.03	5.45	8.52	4.09	6.44	5.08	0.28	3.34	51.81
1957	<b>0.75</b>	2.65	5.17	5.74	4.60	5.75	9.83	5.91	<u>16.84</u>	1.31	6.24	2.22	67.01
1958	4.48	3.61	4.73	7.22	5.57	6.00	8.39	3.45	3.68	1.88	1.75	2.32	53.08
1959	3.67	7.06	8.50	5.73	6.95	3.77	4.83	3.67	3.07	7.93	<b>0.21</b>	1.53	56.92
1960	3.36	7.08	3.41	6.80	3.20	4.75	4.97	4.80	6.22	2.00	0.47	2.35	49.41
1961	4.23	4.15	3.64	5.57	3.97	4.41	3.99	11.09	2.60	<b>0.00</b>	2.84	6.23	52.72
1962	1.72	2.80	8.13	3.28	2.86	3.67	7.97	6.07	3.07	2.82	5.16	1.67	49.22
1963	7.31	3.02	3.18	1.36	3.50	7.99	5.16	1.50	5.25	0.01	4.22	6.05	48.55
1964	10.80	6.81	6.41	9.47	2.23	5.68	9.22	3.07	7.47	<u>9.61</u>	3.35	6.44	<u>80.56</u>
1965	2.63	6.09	5.51	3.96	0.18	9.60	3.26	4.18	4.48	3.41	1.81	3.60	48.71
1966	5.56	9.84	2.57	0.77	5.80	3.13	3.25	9.82	5.09	1.41	2.03	4.62	53.89
1967	8.27	3.32	2.19	<b>0.13</b>	2.61	7.02	6.49	3.58	1.40	1.86	2.40	7.98	47.25
1968	1.28	2.30	3.40	2.50	3.39	1.18	5.45	4.61	2.99	1.41	5.11	5.34	38.96
1969	1.68	3.49	7.08	4.54	3.01	1.71	13.18	3.05	5.64	1.50	1.22	3.80	49.90
1970	4.16	9.20	8.86	1.83	1.81	3.69	5.04	8.01	0.49	4.40	2.21	3.13	52.83
1971	1.97	6.11	7.15	3.17	3.03	3.85	5.20	6.76	2.47	1.84	1.94	3.70	47.19
1972	3.62	6.03	6.41	0.38	2.87	8.89	3.78	5.39	2.14	2.44	3.29	3.77	49.01
1973	8.14	7.71	8.38	7.60	6.87	3.63	11.12	4.51	5.40	0.27	3.64	5.33	72.60
1974	5.24	5.80	2.66	3.40	3.78	1.56	3.29	8.01	4.68	0.84	2.14	2.89	44.29
1975	10.21	6.36	4.91	10.35	3.97	4.10	<u>13.71</u>	5.40	3.81	4.35	2.89	3.28	73.34
1976	6.99	1.50	4.89	1.87	8.89	3.08	3.03	3.47	5.47	6.18	5.72	3.97	55.06
1977	3.47	1.81	6.52	0.88	0.60	6.36	3.55	5.22	9.83	2.59	<u>8.14</u>	4.19	53.16
1978	7.28	3.28	7.25	4.65	6.73	3.79	7.25	4.90	0.98	0.20	6.01	3.65	55.97
1979	7.30	7.78	3.26	7.75	6.22	1.31	7.49	6.30	11.51	0.53	4.47	2.84	66.76
1980	6.58	2.96	<u>11.54</u>	9.29	4.50	3.50	5.87	2.53	4.56	4.71	1.52	<b>0.25</b>	57.81
1981	1.70	5.32	5.94	3.03	2.73	4.74	4.02	2.53	2.44	1.75	0.85	4.94	39.99
1982	4.17	5.61	2.91	5.93	5.39	3.00	7.51	4.42	6.00	2.65	2.34	9.14	59.07
1983	4.92	6.84	8.53	7.88	2.27	5.66	<b>1.19</b>	2.53	8.97	3.52	5.90	7.65	65.86
1984	5.49	5.01	8.62	6.29	2.50	5.31	12.01	5.76	<b>0.32</b>	1.60	1.63	0.80	55.34
1985	4.60	4.46	2.60	1.18	4.44	5.68	3.68	5.58	1.42	7.42	7.91	5.34	54.31
1986	5.68	10.27	3.21	0.83	2.26	1.85	2.75	4.12	2.35	2.22	4.40	5.68	45.62
1987	8.62	5.52	7.23	0.40	4.46	5.43	5.51	4.18	2.27	0.06	4.02	0.81	48.51
1988	5.57	6.40	8.41	2.69	0.28	<b>1.07</b>	5.43	3.98	5.53	1.98	3.28	1.23	45.85
1989	1.59	2.74	4.96	3.63	7.01	<u>12.90</u>	11.19	3.06	3.36	7.20	4.71	5.45	67.80
1990	5.26	4.57	4.55	3.00	3.22	4.02	3.65	2.91	0.85	1.34	0.93	3.42	37.72
1991	<u>13.62</u>	3.44	9.00	5.32	<u>10.03</u>	5.30	10.67	3.89	1.53	1.17	1.60	3.00	68.57
1992	8.37	6.29	7.92	2.50	1.41	11.16	8.69	6.72	3.19	2.08	7.40	2.93	68.66
1993	12.00	3.38	7.41	1.50	1.60	4.18	6.68	3.89	3.44	2.90	2.27	3.63	52.88
1994	8.64	2.53	6.25	4.34	1.82	11.41	10.95	9.08	6.44	7.62	2.53	3.79	75.40
1995	5.23	3.13	4.29	4.35	3.90	5.56	3.02	6.16	0.86	7.51	4.12	1.78	49.91

YEAR	JAN	FEB	MAR	APR	MAY	JUNE	JULY	AUG	SEP	OCT	NOV	DEC	TOTAL
1996	3.64	5.99	8.47	5.76	1.50	5.43	2.83	14.28	5.32	3.81	2.01	3.65	62.69
1997	6.68	5.29	2.63	10.08	5.91	6.41	5.73	4.65	3.78	2.10	6.85	8.44	68.55
1998	6.28	8.30	6.11	2.24	1.45	2.35	4.37	2.20	16.31	0.30	2.05	1.98	53.94
1999	6.95	2.90	3.61	1.50	6.71	8.99	8.64	4.02	4.33	3.13	3.56	2.50	56.84
2000	3.78	4.96	4.48	4.05	0.09	4.00	3.40	7.15	7.20	0.71	4.43	3.21	47.46
2001	2.16	0.82	10.00	1.99	2.52	8.24	4.66	8.21	1.90	1.51	1.70	0.78	44.49
2002	3.82	2.44	5.51	5.78	2.19	3.45	10.34	3.30	11.83	7.36	7.76	5.99	69.77
2003	2.30	7.03	8.18	4.89	3.11	6.11	7.84	5.99	2.39	3.58	3.04	3.12	57.58
2004	3.19	7.66	0.90	4.37	1.19	6.66	4.92	1.67	10.01	3.89	4.97	3.25	52.68
2005	3.33	2.31	9.05	7.04	1.67	7.47	9.44	11.71	1.62	0.03	3.15	4.81	61.63
2006	4.82	3.90	0.91	1.61	4.97	1.99	2.22	5.18	0.91	3.09	3.41	5.43	38.44
2007	5.99	2.45	1.10	0.99	1.57	3.97	3.94	4.18	1.27	4.79	1.89	4.03	36.17
2008	4.26	9.00	9.11	4.28	1.46	8.64	4.02	9.29	0.74	5.11	3.18	8.23	67.32
2009	2.33	3.26	7.11	7.73	9.17	2.78	3.88	3.19	5.22	3.39	2.35	9.57	59.98
2010	7.53	3.99	3.41	4.01	5.09	2.92	2.31	0.84	1.33	0.22	5.82	0.63	38.10
2011	4.33	4.04	5.00	0.92	0.78	1.66	5.11	1.87	2.26	1.84	1.94	3.75	33.50
2012	3.79	7.49	5.94	3.17	1.42	7.35	5.05	14.35	5.17	1.75	1.30	4.10	60.88
2013	1.05	12.86	2.99	3.54	0.64	3.72	13.39	13.17	2.14	1.96	3.91	4.44	63.81
<b>2014</b>	<b>2.15</b>	<b>4.99</b>	<b>7.70</b>	<b>13.18</b>	<b>4.03</b>	<b>2.32</b>							<b>34.37</b>
<b>Deviation from the Average Monthly Rainfall</b>													
Inches	-2.80	-0.13	2.27	9.05	0.51	-2.57							6.32
<b>Monthly Average Rainfall, 1952-2013</b>													
AVG.	4.95	5.12	5.43	4.13	3.52	4.89	6.22	5.33	4.38	2.79	3.34	4.08	54.20
<b>% of Annual Rainfall Occuring each Month</b>													
	9.1%	9.5%	10.0%	7.6%	6.5%	9.0%	11.5%	9.8%	8.1%	5.1%	6.2%	7.5%	
<b>Record High/Low for the Month</b>													
<b>LOW</b>	0.75	0.82	0.84	0.13	0.09	1.07	1.19	0.84	0.32	0.00	0.21	0.25	28.68
<b>HIGH</b>	13.62	12.86	11.54	13.18	10.03	12.90	13.71	14.35	16.84	9.61	8.14	15.31	80.56



**Jackson County**  
**Monthly Cumulative Rainfall, 1952 -2012**  
North Florida Research & Education Center Marianna, FL



YEAR	JAN	FEB	MAR	APR	MAY	JUNE	JULY	AUG	SEP	OCT	NOV	DEC
1952	1.14	10.02	14.50	16.61	21.74	22.86	28.81	37.62	40.71	41.36	44.62	48.04
1953	4.84	12.10	15.13	23.56	25.99	29.96	36.80	38.43	44.76	45.41	49.50	64.81
1954	1.33	4.82	7.44	10.02	<b>11.98</b>	15.44	<b>18.72</b>	<b>21.56</b>	<b>23.28</b>	<b>24.58</b>	<b>27.24</b>	<b>28.68</b>
1955	3.66	5.49	<b>6.33</b>	12.13	15.16	16.78	23.53	27.28	29.72	31.82	32.54	33.31
1956	3.59	8.77	12.54	14.58	18.61	24.06	32.58	36.67	43.11	48.19	48.47	51.81
1957	<b>0.75</b>	3.40	8.57	14.31	18.91	24.66	34.49	40.40	57.24	58.55	64.79	67.01
1958	4.48	8.09	12.82	20.04	25.61	31.61	40.00	43.45	47.13	49.01	50.76	53.08
1959	3.67	10.73	19.23	24.96	31.91	35.68	40.51	44.18	47.25	55.18	55.39	56.92
1960	3.36	10.44	13.85	20.65	23.85	28.60	33.57	38.37	44.59	46.59	47.06	49.41
1961	4.23	8.38	12.02	17.59	21.56	25.97	29.96	41.05	43.65	43.65	46.49	52.72
1962	1.72	4.52	12.65	15.93	18.79	22.46	30.43	36.50	39.57	42.39	47.55	49.22
1963	7.31	10.33	13.51	14.87	18.37	26.36	31.52	33.02	38.27	38.28	42.50	48.55
1964	10.80	<u>17.61</u>	24.02	<u>33.49</u>	35.72	41.40	50.62	53.69	61.16	<u>70.77</u>	<u>74.12</u>	<u>80.56</u>
1965	2.63	8.72	14.23	18.19	18.37	27.97	31.23	35.41	39.89	43.30	45.11	48.71
1966	5.56	15.40	17.97	18.74	24.54	27.67	30.92	40.74	45.83	47.24	49.27	53.89
1967	8.27	11.59	13.78	13.91	16.52	23.54	30.03	33.61	35.01	36.87	39.27	47.25
1968	1.28	3.58	6.98	<b>9.48</b>	12.87	<b>14.05</b>	19.50	24.11	27.10	28.51	33.62	38.96
1969	1.68	5.17	12.25	16.79	19.80	21.51	34.69	37.74	43.38	44.88	46.10	49.90
1970	4.16	13.36	22.22	24.05	25.86	29.55	34.59	42.60	43.09	47.49	49.70	52.83
1971	1.97	8.08	15.23	18.40	21.43	25.28	30.48	37.24	39.71	41.55	43.49	47.19
1972	3.62	9.65	16.06	16.44	19.31	28.20	31.98	37.37	39.51	41.95	45.24	49.01
1973	8.14	15.85	24.23	31.83	38.70	42.33	53.45	57.96	<u>63.36</u>	63.63	67.27	72.60
1974	5.24	11.04	13.70	17.10	20.88	22.44	25.73	33.74	38.42	39.26	41.40	44.29
1975	10.21	16.57	21.48	31.83	35.80	39.90	53.61	59.01	62.82	67.17	70.06	73.34
1976	6.99	8.49	13.38	15.25	24.14	27.22	30.25	33.72	39.19	45.37	51.09	55.06
1977	3.47	5.28	11.80	12.68	13.28	19.64	23.19	28.41	38.24	40.83	48.97	53.16
1978	7.28	10.56	17.81	22.46	29.19	32.98	40.23	45.13	46.11	46.31	52.32	55.97
1979	7.30	15.08	18.34	26.09	32.31	33.62	41.11	47.41	58.92	59.45	63.92	66.76
1980	6.58	9.54	21.08	30.37	34.87	38.37	44.24	46.77	51.33	56.04	57.56	57.81
1981	1.70	7.02	12.96	15.99	18.72	23.46	27.48	30.01	32.45	34.20	35.05	39.99
1982	4.17	9.78	12.69	18.62	24.01	27.01	34.52	38.94	44.94	47.59	49.93	59.07
1983	4.92	11.76	20.29	28.17	30.44	36.10	37.29	39.82	48.79	52.31	58.21	65.86
1984	5.49	10.50	19.12	25.41	27.91	33.22	45.23	50.99	51.31	52.91	54.54	55.34
1985	4.60	9.06	11.66	12.84	17.28	22.96	26.64	32.22	33.64	41.06	48.97	54.31
1986	5.68	15.95	19.16	19.99	22.25	24.10	26.85	30.97	33.32	35.54	39.94	45.62
1987	8.62	14.14	21.37	21.77	26.23	31.66	37.17	41.35	43.62	43.68	47.70	48.51
1988	5.57	11.97	20.38	23.07	23.35	24.42	29.85	33.83	39.36	41.34	44.62	45.85
1989	1.59	4.33	9.29	12.92	19.93	32.83	44.02	47.08	50.44	57.64	62.35	67.80
1990	5.26	9.83	14.38	17.38	20.60	24.62	28.27	31.18	32.03	33.37	34.30	37.72
1991	<u>13.62</u>	17.06	<u>26.06</u>	31.38	<u>41.41</u>	<u>46.71</u>	<u>57.38</u>	<u>61.27</u>	62.80	63.97	65.57	68.57
1992	8.37	14.66	22.58	25.08	26.49	37.65	46.34	53.06	56.25	58.33	65.73	68.66
1993	12.00	15.38	22.79	24.29	25.89	30.07	36.75	40.64	44.08	46.98	49.25	52.88
1994	8.64	11.17	17.42	21.76	23.58	34.99	45.94	55.02	61.46	69.08	71.61	75.40
1995	5.23	8.36	12.65	17.00	20.90	26.46	29.48	35.64	36.50	44.01	48.13	49.91

YEAR	JAN	FEB	MAR	APR	MAY	JUNE	JULY	AUG	SEP	OCT	NOV	DEC
1996	3.64	9.63	18.10	23.86	25.36	30.79	33.62	47.90	53.22	57.03	59.04	62.69
1997	6.68	11.97	14.60	24.68	30.59	37.00	42.73	47.38	51.16	53.26	60.11	68.55
1998	6.28	14.58	20.69	22.93	24.38	26.73	31.10	33.30	49.61	49.91	51.96	53.94
1999	6.95	9.85	13.46	14.96	21.67	30.66	39.30	43.32	47.65	50.78	54.34	56.84
2000	3.78	8.74	13.22	17.27	17.36	21.36	24.76	31.91	39.11	39.82	44.25	47.46
2001	2.16	2.98	12.98	14.97	17.49	25.73	30.39	38.60	40.50	42.01	43.71	44.49
2002	3.82	6.26	11.77	17.55	19.74	23.19	33.53	36.83	48.66	56.02	63.78	69.77
2003	2.30	9.33	17.51	22.40	25.51	31.62	39.46	45.45	47.84	51.42	54.46	57.58
2004	3.19	10.85	11.75	16.12	17.31	23.97	28.89	30.56	40.57	44.46	49.43	52.68
2005	3.33	5.64	14.69	21.73	23.40	30.87	40.31	52.02	53.64	53.67	56.82	61.63
2006	4.82	8.72	9.63	11.24	16.21	18.20	20.42	25.60	26.51	29.60	33.01	38.44
2007	5.99	8.44	9.54	10.53	12.10	16.07	20.01	24.19	25.46	30.25	32.14	36.17
2008	4.26	13.26	22.37	26.65	28.11	36.75	40.77	50.06	50.80	55.91	59.09	67.32
2009	2.33	5.59	12.70	20.43	29.60	32.38	36.26	39.45	44.67	48.06	50.41	59.98
2010	7.53	11.52	14.93	18.94	24.03	26.95	29.26	30.10	31.43	31.65	37.47	38.10
2011	4.33	8.37	13.37	14.29	15.07	16.73	21.84	23.71	25.97	27.81	29.75	33.50
2012	3.79	11.28	17.22	20.39	21.81	29.16	34.21	48.56	53.73	55.48	56.78	60.88
2013	1.05	13.91	16.90	20.44	21.08	24.80	38.19	51.36	53.50	55.46	59.37	63.81
2014	2.15	7.14	14.84	28.02	32.05	34.37						

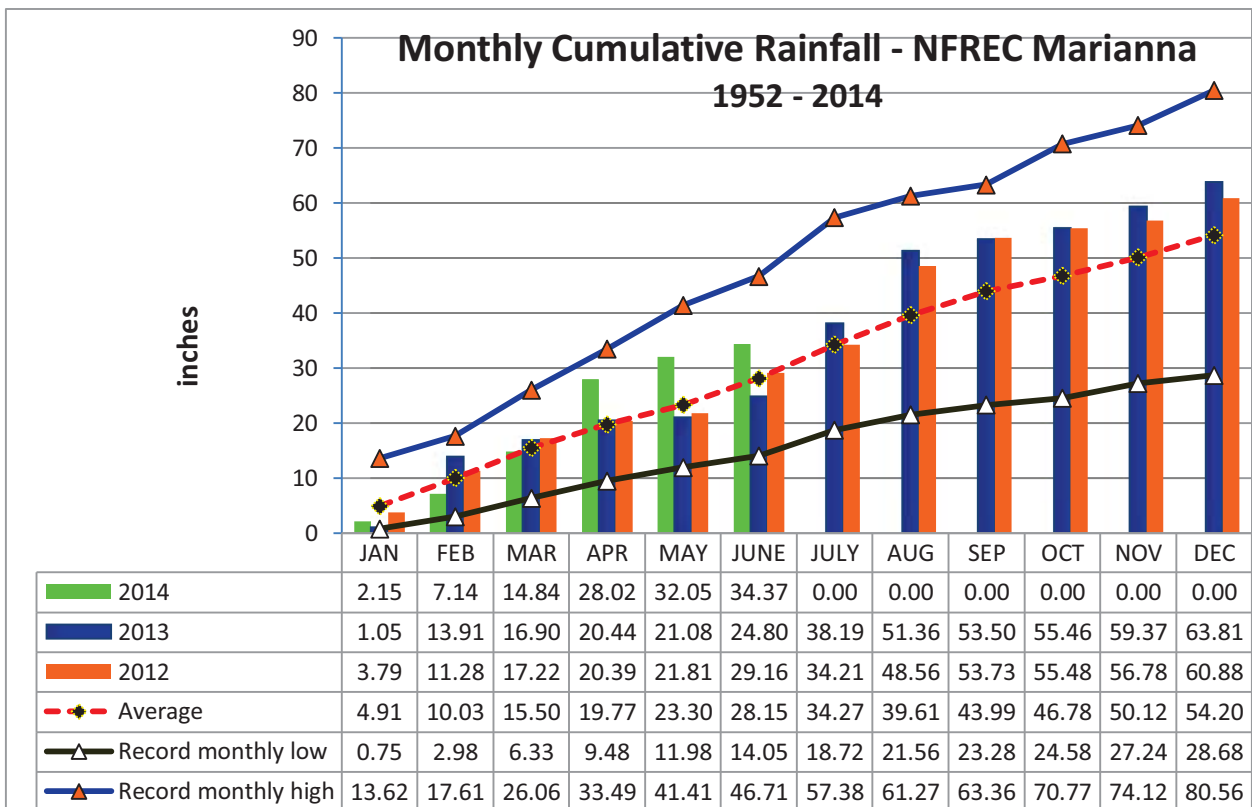
2013 Deviation from the Average Accumulation												
Inches	-2.76	-2.89	-0.66	8.25	8.75	6.22						

Average Accumulation, 1952-2013												
Inches	4.91	10.03	15.50	19.77	23.30	28.15	34.27	39.61	43.99	46.78	50.12	54.20

Record High/Low Accumulation												
<b>LOW</b>	0.75	2.98	6.33	9.48	11.98	14.05	18.72	21.56	23.28	24.58	27.24	28.68
<b>HIGH</b>	13.62	17.61	26.06	33.49	41.41	46.71	57.38	61.27	63.36	70.77	74.12	80.56



## 2014 FL Panhandle FAWN Weather Station Summary

FAWN Station	Data	Jan	Feb	Mar	Apr	May	June	Total
Monticello	Rain	4.3	4.4	4.2	11.9	3.8	2.7	31.4
	Hist Avg	4.5	4.6	6.1	4.1	3.4	5.7	31.4
	Deviation	-0.2	-0.2	-1.9	7.8	0.4	-3.0	3.0
Quincy	Rain	4.0	5.4	9.3	13.0	3.3	4.0	38.9
	Hist Avg	5.0	4.3	5.6	3.7	4.2	5.2	28.0
	Deviation	-1.0	1.1	3.7	9.3	-0.9	-1.3	10.9
Carrabelle	Rain	6.1	6.7	6.7	7.1	2.3	7.7	36.6
	Hist Avg	3.8	3.7	4.9	3.0	2.7	5.3	23.4
	Deviation	2.3	3.0	1.8	4.1	-0.4	2.4	13.2
Marianna	Rain	2.2	5.0	7.7	13.2	4.0	2.3	34.4
	Hist Avg	5.0	5.1	5.4	4.1	3.5	4.9	28.1
	Deviation	-2.8	-0.1	2.3	9.1	0.5	-2.6	6.4
DeFuniak	Rain	3.3	5.2	7.7	19.1	8.4	5.7	49.4
Jay	Rain	3.4	5.1	7.6	16.7	10.3	5.3	48.3
	Hist Avg	5.5	5.3	6.6	4.8	4.8	5.8	32.8
	Deviation	-2.1	-0.2	1.0	11.9	5.5	-0.5	15.5
<b>6 Station Average</b>		<b>3.9</b>	<b>5.3</b>	<b>7.2</b>	<b>13.5</b>	<b>5.4</b>	<b>4.6</b>	<b>39.8</b>

# FL Panhandle 2014 Jan-June Rainfall Totals

