



## Jackson County 2015 Weather Data

*63 Years of Weather Data Recorded at the UF/IFAS Marianna North Florida Research and Education Center*



**Doug Mayo**  
Jackson County Extension Director

1952-2008 Rainfall Data compiled by  
Ed Jowers, Emeritus County Extension Director

Data provided by Florida Automated Weather Station (FAWN)  
UF/IFAS North Florida Research and Education Center  
Greenwood, Florida



<http://fawn.ifas.ufl.edu/station.php?id=130>

Tower Name	Tower Number	Latitude Degree, Minutes	Latitude Degrees Minutes, Seconds	Latitude Degrees Decimal	Longitude Degree, Minutes	Longitude Degrees Minutes, Seconds	Longitude Degrees Decimal	Elevation Feet
Marianna	130.00	N 30°51.000'	N 30°50'00.00"	N 30.85000°	-85°09.910'	-85°09'54.60"	-85.16516°	115'

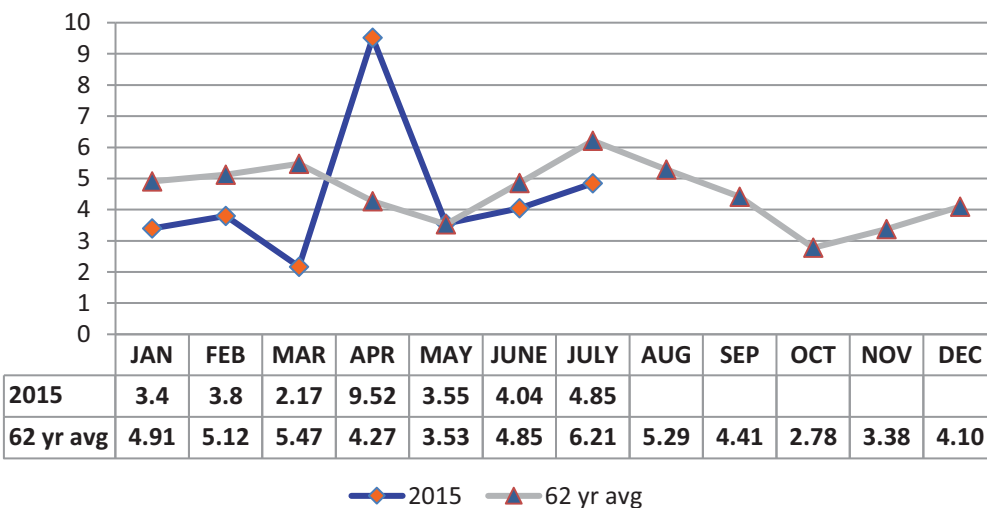
# 2015 Marianna UF/IFAS FAWN Weather Summary

Month	6' Air Temp			Soil Temp			Rainfall Inches	Dev from 62 yr Avg
	High	Low	Avg	High	Low	Avg		
January	75	19	49	54	33	43	3.4	-1.5
February	74	24	48	51	32	42	3.8	-1.3
March	84	33	63	68	40	55	2.2	-3.3
April	88	49	70	75	56	65	9.5	5.2
May	92	49	75	85	60	72	3.6	0.0
June	97	68	80	91	69	77	4.0	-0.8
July	97	68	82	Bad Sensor			4.9	-1.4
2015	97	19	67	91	32	59	31.3	-3.0

Data: UF/IFAS Florida Automated Weather Network Marianna Station

Total days in 2015 <32°      13      Total days in 2015 >95°      15

## Monthly Rainfall @ Marianna FAWN



# January Daily Weather Data

Temperature							Precipitation		
Date	Air Temp 6 ft			Soil Temp 4 inch			Rain	Evapo Trans	
	Avg	Min	Max	Avg	Min	Max	Inches	Inches	
1-Jan-15	49	40	59	46	43	48	0.00	0.04	
2-Jan-15	57	50	62	47	45	49	0.00	0.05	
3-Jan-15	67	60	75	51	49	54	0.00	0.06	
4-Jan-15	63	51	71	52	49	53	1.48	0.06	
5-Jan-15	48	40	56	47	45	50	0.00	0.04	
6-Jan-15	46	34	61	44	41	48	0.00	0.04	
7-Jan-15	44	29	57	42	39	46	0.00	0.04	
8-Jan-15	27	19	38	37	34	40	0.00	0.02	
9-Jan-15	34	24	40	35	33	37	0.00	0.03	
10-Jan-15	41	32	51	37	34	41	0.00	0.03	
11-Jan-15	51	38	62	40	36	43	0.00	0.05	
12-Jan-15	54	50	61	43	42	46	0.00	0.04	
13-Jan-15	55	52	60	45	44	47	0.00	0.04	
14-Jan-15	51	46	54	45	44	46	0.00	0.04	
15-Jan-15	45	43	46	43	42	44	0.28	0.03	
16-Jan-15	45	38	57	42	39	45	0.00	0.04	
17-Jan-15	45	33	61	41	38	44	0.00	0.05	
18-Jan-15	49	37	65	41	38	45	0.00	0.05	
19-Jan-15	49	31	70	41	37	46	0.00	0.05	
20-Jan-15	53	38	69	42	38	47	0.00	0.05	
21-Jan-15	56	44	72	45	42	50	0.00	0.06	
22-Jan-15	56	48	65	45	43	48	0.00	0.05	
23-Jan-15	57	50	62	46	44	47	1.64	0.05	
24-Jan-15	47	37	55	45	41	47	0.00	0.05	
25-Jan-15	49	32	63	42	38	46	0.00	0.06	
26-Jan-15	48	38	54	42	40	44	0.00	0.05	
27-Jan-15	48	35	62	41	37	45	0.00	0.06	
28-Jan-15	43	35	56	41	37	45	0.00	0.05	
29-Jan-15	50	33	67	42	37	46	0.00	0.06	
30-Jan-15	52	45	59	43	41	47	0.00	0.06	
31-Jan-15	46	32	62	42	38	46	0.00	0.06	
<b>High</b>			<b>75</b>			<b>54</b>			
<b>Low</b>		<b>19</b>			<b>33</b>				
<b>Average</b>	<b>49</b>	39	60	<b>43</b>	40	46			
Days over 95 <sup>o</sup>	0			<b>Total for Month</b>		<b>3.40</b>	1.46	3.4	1.5
				<b>Number of Rain Days</b>		3.00		3.0	
Days below 32 <sup>o</sup>	5			<b>Historic Average</b>		4.91		4.9	
				<b>Deviation from Average</b>		-1.51		-1.5	
				<b>Net Gain/loss (Rain - ET)</b>			<b>1.94</b>		1.9

Year Cumulative  
Rain      ET





## April Daily Weather Data

Temperature							Precipitation			
Date	Air Temp 6 ft			Soil Temp 4 inch			Rain	Evapo Trans		
	Avg	Min	Max	Avg	Min	Max	Inches	Inches		
1-Apr-15	72	62	84	61	57	67	0.00	0.15		
2-Apr-15	70	60	83	63	59	67	0.00	0.13		
3-Apr-15	69	56	82	63	59	69	0.00	0.14		
4-Apr-15	69	57	77	63	60	66	0.00	0.1		
5-Apr-15	66	49	78	61	56	67	0.00	0.13		
6-Apr-15	71	65	80	63	61	67	0.00	0.11		
7-Apr-15	74	64	87	66	61	71	0.00	0.15		
8-Apr-15	75	61	88	68	62	74	0.00	0.16		
9-Apr-15	74	62	86	68	64	73	0.00	0.14		
10-Apr-15	75	67	85	68	65	72	0.20	0.12		
11-Apr-15	70	66	79	68	65	71	0.04	0.1		
12-Apr-15	69	65	76	66	64	68	1.68	0.07		
13-Apr-15	71	68	76	65	64	67	0.22	0.07		
14-Apr-15	73	69	83	66	64	69	2.30	0.1		
15-Apr-15	74	67	82	67	64	71	0.03	0.12		
16-Apr-15	69	65	76	65	63	68	1.44	0.08		
17-Apr-15	68	64	72	64	63	66	0.92	0.07		
18-Apr-15	72	66	79	65	63	69	0.01	0.1		
19-Apr-15	71	66	76	65	63	66	1.15	0.08		
20-Apr-15	69	64	76	63	61	65	0.00	0.08		
21-Apr-15	66	54	76	64	59	70	0.00	0.15		
22-Apr-15	69	56	83	66	60	72	0.00	0.16		
23-Apr-15	73	59	86	68	62	74	0.00	0.16		
24-Apr-15	73	62	83	69	64	75	0.00	0.16		
25-Apr-15	71	65	83	67	65	70	1.18	0.1		
26-Apr-15	75	65	86	69	63	75	0.00	0.17		
27-Apr-15	67	65	69	66	64	68	0.00	0.06		
28-Apr-15	67	63	72	64	63	66	0.17	0.07		
29-Apr-15	65	57	75	65	62	69	0.18	0.11		
30-Apr-15	65	54	76	64	59	70	0.00	0.15		
<b>High</b>			<b>88</b>			<b>75</b>				
<b>Low</b>		<b>49</b>			<b>56</b>					
<b>Average</b>	<b>70</b>	62	80	<b>65</b>	62	69				
Days over 95 <sup>o</sup>				0			<b>Total for Month</b>		<b>9.52</b>	3.49
Days below 32 <sup>o</sup>				0			<b>Number of Rain Days</b>		13.00	
							<b>Historic Average</b>		4.27	
							<b>Deviation from Average</b>		5.25	
							<b>Net Gain/loss (Rain - ET)</b>			<b>6.03</b>

<b>Year Cumulative</b>	
<b>Rain</b>	<b>ET</b>
18.9	9.7
37.0	
19.8	
-0.9	
	9.2

# May Daily Weather Data

Temperature							Precipitation	
Date	Air Temp 6 ft			Soil Temp 4 inch			Rain	Evapo Trans
	Avg	Min	Max	Avg	Min	Max	Inches	Inches
1-May-15	65	54	75	65	60	71	0.00	0.16
2-May-15	66	49	80	66	60	73	0.00	0.15
3-May-15	69	53	82	67	62	73	0.00	0.15
4-May-15	72	60	84	68	63	74	0.00	0.17
5-May-15	73	58	83	69	64	74	0.00	0.17
6-May-15	74	63	85	70	65	77	0.00	0.17
7-May-15	73	60	87	71	66	78	0.00	0.18
8-May-15	75	60	89	72	66	79	0.00	0.17
9-May-15	79	64	91	73	68	79	0.00	0.17
10-May-15	79	67	92	74	69	80	0.00	0.17
11-May-15	78	65	90	75	69	82	0.00	0.19
12-May-15	80	70	90	76	71	83	0.00	0.18
13-May-15	78	69	89	76	72	81	0.00	0.16
14-May-15	74	67	90	74	71	79	0.03	0.13
15-May-15	73	68	85	71	68	75	0.27	0.1
16-May-15	76	68	87	72	66	78	0.00	0.17
17-May-15	78	69	89	74	68	80	0.00	0.17
18-May-15	78	71	90	75	70	82	0.01	0.17
19-May-15	78	69	91	77	70	84	0.00	0.19
20-May-15	79	68	90	78	72	85	0.69	0.19
21-May-15	77	67	87	75	70	81	0.00	0.19
22-May-15	72	62	83	74	69	81	0.00	0.18
23-May-15	76	62	87	74	68	82	0.00	0.18
24-May-15	80	72	89	75	71	81	0.00	0.18
25-May-15	76	70	86	75	71	79	0.00	0.14
26-May-15	72	68	86	70	67	75	2.49	0.09
27-May-15	74	67	86	70	66	76	0.06	0.14
28-May-15	75	68	84	71	67	75	0.00	0.13
29-May-15	76	67	86	72	67	78	0.00	0.18
30-May-15	77	67	90	74	68	80	0.00	0.19
31-May-15	76	69	89	74	70	80	0.00	0.17
<b>High</b>			<b>92</b>			<b>85</b>		
<b>Low</b>		<b>49</b>			<b>60</b>			
<b>Average</b>	<b>75</b>	65	87	<b>72</b>	68	79		
				<b>Total for Month</b>			<b>3.55</b>	5.08
Days over 95 <sup>o</sup>				0				
Days of 100 <sup>o</sup>				0				
Days below 32 <sup>o</sup>				0				
				<b>Number of Rain Days</b>			6.00	
				<b>Historic Average</b>			3.53	
				<b>Deviation from Average</b>			0.02	
				<b>Net Gain/loss (Rain - ET)</b>				<b>-1.53</b>

<b>Year Cumulative</b>	
<b>Rain</b>	<b>ET</b>
22.4	14.8
43.0	
23.3	
-0.9	
	7.7





# July Daily Weather Data

Temperature							Precipitation	
Date	Air Temp 6 ft			Soil Temp 4 inch			Rain	Evapo Trans
	Avg	Min	Max	Avg	Min	Max	Inches	Inches
1-Jul-15	80	68	90	73	67	80	0.00	0.2
2-Jul-15	76	71	87	72	70	76	0.87	0.11
3-Jul-15	82	74	92	74	69	80	0.00	0.19
4-Jul-15	78	70	88	74	71	77	0.47	0.13
5-Jul-15	72	69	79	70	69	72	0.55	0.08
6-Jul-15	78	69	87	73	68	78	0.00	0.17
7-Jul-15	82	71	92	76	70	82	0.00	0.2
8-Jul-15	79	72	93	76	72	83	0.44	0.17
9-Jul-15	80	71	91	77	71	83	0.01	0.2
10-Jul-15	82	72	93	78	72	84	0.00	0.21
11-Jul-15	84	74	94	<i>Bad Soil Temperature Sensor</i>			0.00	0.2
12-Jul-15	86	75	97				0.00	0.22
13-Jul-15	83	75	94				0.00	0.19
14-Jul-15	83	76	94				0.00	0.18
15-Jul-15	86	78	94				0.00	0.21
16-Jul-15	82	75	94				0.37	0.19
17-Jul-15	84	75	96				0.00	0.19
18-Jul-15	85	75	96				0.00	0.21
19-Jul-15	80	72	95				0.60	0.14
20-Jul-15	83	73	95				0.00	0.2
21-Jul-15	84	75	96				0.00	0.2
22-Jul-15	83	74	96				0.00	0.18
23-Jul-15	82	76	95				0.32	0.17
24-Jul-15	80	73	92				0.94	0.16
25-Jul-15	81	72	90				0.00	0.18
26-Jul-15	81	72	91				0.00	0.2
27-Jul-15	83	71	94				0.00	0.2
28-Jul-15	85	74	97				0.00	0.2
29-Jul-15	84	77	97				0.07	0.19
30-Jul-15	82	75	94				0.02	0.17
31-Jul-15	81	72	94				0.19	0.18
<b>High</b>			<b>97</b>			<b>84</b>		
<b>Low</b>		<b>68</b>			<b>67</b>			
<b>Average</b>	<b>82</b>	73	93	<b>74</b>	70	79		
				<b>Total for Month</b>		<b>4.85</b>	5.62	
Days over 95 <sup>o</sup>				8	<b>Number of Rain Days</b>		12.00	31.3
Days of 100 <sup>o</sup>				0	<b>Historic Average</b>		6.21	66.0
Days below 32 <sup>o</sup>				0	<b>Deviation from Average</b>		-1.36	34.4
				<b>Net Gain/loss (Rain - ET)</b>		<b>-0.77</b>		-3.0
								6.0

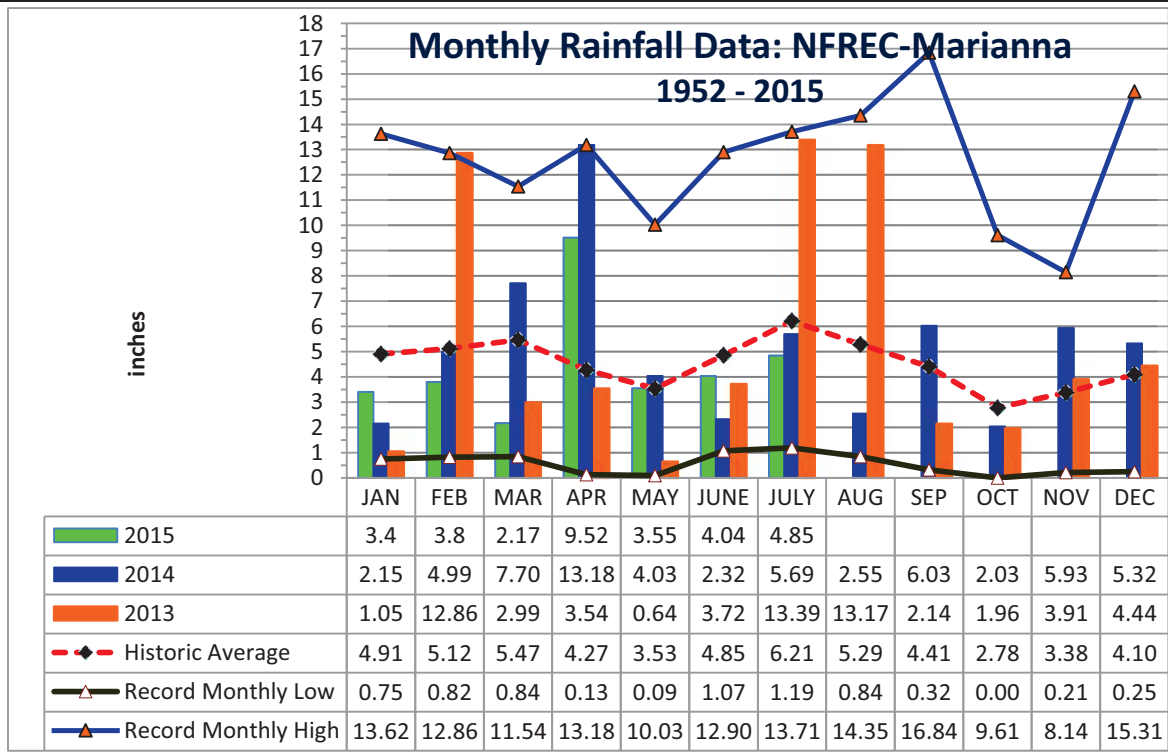
<b>Year Cumulative</b>	
<b>Rain</b>	<b>ET</b>
31.3	25.4
66.0	
34.4	
-3.0	
	6.0

**Jackson County**  
**Monthly Total Rainfall, 1952 - 2012**  
No FL Research & Education Cntr, Marianna, FL



YEAR	JAN	FEB	MAR	APR	MAY	JUNE	JULY	AUG	SEP	OCT	NOV	DEC	TOTAL
1952	1.14	8.88	4.48	2.11	5.13	1.12	5.95	8.81	3.09	0.65	3.26	3.42	48.04
1953	4.84	7.26	3.03	8.43	2.43	3.97	6.84	1.63	6.33	0.65	4.09	<u>15.31</u>	64.81
1954	1.33	3.49	2.62	2.58	1.96	3.46	3.28	2.84	1.72	1.30	2.66	1.44	<b>28.68</b>
1955	3.66	1.83	<b>0.84</b>	5.80	3.03	1.62	6.75	3.75	2.44	2.10	0.72	0.77	33.31
1956	3.59	5.18	3.77	2.04	4.03	5.45	8.52	4.09	6.44	5.08	0.28	3.34	51.81
1957	<b>0.75</b>	2.65	5.17	5.74	4.60	5.75	9.83	5.91	<u>16.84</u>	1.31	6.24	2.22	67.01
1958	4.48	3.61	4.73	7.22	5.57	6.00	8.39	3.45	3.68	1.88	1.75	2.32	53.08
1959	3.67	7.06	8.50	5.73	6.95	3.77	4.83	3.67	3.07	7.93	<b>0.21</b>	1.53	56.92
1960	3.36	7.08	3.41	6.80	3.20	4.75	4.97	4.80	6.22	2.00	0.47	2.35	49.41
1961	4.23	4.15	3.64	5.57	3.97	4.41	3.99	11.09	2.60	<b>0.00</b>	2.84	6.23	52.72
1962	1.72	2.80	8.13	3.28	2.86	3.67	7.97	6.07	3.07	2.82	5.16	1.67	49.22
1963	7.31	3.02	3.18	1.36	3.50	7.99	5.16	1.50	5.25	0.01	4.22	6.05	48.55
1964	10.80	6.81	6.41	9.47	2.23	5.68	9.22	3.07	7.47	<u>9.61</u>	3.35	6.44	<u>80.56</u>
1965	2.63	6.09	5.51	3.96	0.18	9.60	3.26	4.18	4.48	3.41	1.81	3.60	48.71
1966	5.56	9.84	2.57	0.77	5.80	3.13	3.25	9.82	5.09	1.41	2.03	4.62	53.89
1967	8.27	3.32	2.19	<b>0.13</b>	2.61	7.02	6.49	3.58	1.40	1.86	2.40	7.98	47.25
1968	1.28	2.30	3.40	2.50	3.39	1.18	5.45	4.61	2.99	1.41	5.11	5.34	38.96
1969	1.68	3.49	7.08	4.54	3.01	1.71	13.18	3.05	5.64	1.50	1.22	3.80	49.90
1970	4.16	9.20	8.86	1.83	1.81	3.69	5.04	8.01	0.49	4.40	2.21	3.13	52.83
1971	1.97	6.11	7.15	3.17	3.03	3.85	5.20	6.76	2.47	1.84	1.94	3.70	47.19
1972	3.62	6.03	6.41	0.38	2.87	8.89	3.78	5.39	2.14	2.44	3.29	3.77	49.01
1973	8.14	7.71	8.38	7.60	6.87	3.63	11.12	4.51	5.40	0.27	3.64	5.33	72.60
1974	5.24	5.80	2.66	3.40	3.78	1.56	3.29	8.01	4.68	0.84	2.14	2.89	44.29
1975	10.21	6.36	4.91	10.35	3.97	4.10	<u>13.71</u>	5.40	3.81	4.35	2.89	3.28	73.34
1976	6.99	1.50	4.89	1.87	8.89	3.08	3.03	3.47	5.47	6.18	5.72	3.97	55.06
1977	3.47	1.81	6.52	0.88	0.60	6.36	3.55	5.22	9.83	2.59	<u>8.14</u>	4.19	53.16
1978	7.28	3.28	7.25	4.65	6.73	3.79	7.25	4.90	0.98	0.20	6.01	3.65	55.97
1979	7.30	7.78	3.26	7.75	6.22	1.31	7.49	6.30	11.51	0.53	4.47	2.84	66.76
1980	6.58	2.96	<u>11.54</u>	9.29	4.50	3.50	5.87	2.53	4.56	4.71	1.52	<b>0.25</b>	57.81
1981	1.70	5.32	5.94	3.03	2.73	4.74	4.02	2.53	2.44	1.75	0.85	4.94	39.99
1982	4.17	5.61	2.91	5.93	5.39	3.00	7.51	4.42	6.00	2.65	2.34	9.14	59.07
1983	4.92	6.84	8.53	7.88	2.27	5.66	<b>1.19</b>	2.53	8.97	3.52	5.90	7.65	65.86
1984	5.49	5.01	8.62	6.29	2.50	5.31	12.01	5.76	<b>0.32</b>	1.60	1.63	0.80	55.34
1985	4.60	4.46	2.60	1.18	4.44	5.68	3.68	5.58	1.42	7.42	7.91	5.34	54.31
1986	5.68	10.27	3.21	0.83	2.26	1.85	2.75	4.12	2.35	2.22	4.40	5.68	45.62
1987	8.62	5.52	7.23	0.40	4.46	5.43	5.51	4.18	2.27	0.06	4.02	0.81	48.51
1988	5.57	6.40	8.41	2.69	0.28	<b>1.07</b>	5.43	3.98	5.53	1.98	3.28	1.23	45.85
1989	1.59	2.74	4.96	3.63	7.01	<u>12.90</u>	11.19	3.06	3.36	7.20	4.71	5.45	67.80
1990	5.26	4.57	4.55	3.00	3.22	4.02	3.65	2.91	0.85	1.34	0.93	3.42	37.72
1991	<u>13.62</u>	3.44	9.00	5.32	<u>10.03</u>	5.30	10.67	3.89	1.53	1.17	1.60	3.00	68.57
1992	8.37	6.29	7.92	2.50	1.41	11.16	8.69	6.72	3.19	2.08	7.40	2.93	68.66
1993	12.00	3.38	7.41	1.50	1.60	4.18	6.68	3.89	3.44	2.90	2.27	3.63	52.88
1994	8.64	2.53	6.25	4.34	1.82	11.41	10.95	9.08	6.44	7.62	2.53	3.79	75.40
1995	5.23	3.13	4.29	4.35	3.90	5.56	3.02	6.16	0.86	7.51	4.12	1.78	49.91

YEAR	JAN	FEB	MAR	APR	MAY	JUNE	JULY	AUG	SEP	OCT	NOV	DEC	TOTAL
1996	3.64	5.99	8.47	5.76	1.50	5.43	2.83	14.28	5.32	3.81	2.01	3.65	62.69
1997	6.68	5.29	2.63	10.08	5.91	6.41	5.73	4.65	3.78	2.10	6.85	8.44	68.55
1998	6.28	8.30	6.11	2.24	1.45	2.35	4.37	2.20	16.31	0.30	2.05	1.98	53.94
1999	6.95	2.90	3.61	1.50	6.71	8.99	8.64	4.02	4.33	3.13	3.56	2.50	56.84
2000	3.78	4.96	4.48	4.05	0.09	4.00	3.40	7.15	7.20	0.71	4.43	3.21	47.46
2001	2.16	0.82	10.00	1.99	2.52	8.24	4.66	8.21	1.90	1.51	1.70	0.78	44.49
2002	3.82	2.44	5.51	5.78	2.19	3.45	10.34	3.30	11.83	7.36	7.76	5.99	69.77
2003	2.30	7.03	8.18	4.89	3.11	6.11	7.84	5.99	2.39	3.58	3.04	3.12	57.58
2004	3.19	7.66	0.90	4.37	1.19	6.66	4.92	1.67	10.01	3.89	4.97	3.25	52.68
2005	3.33	2.31	9.05	7.04	1.67	7.47	9.44	11.71	1.62	0.03	3.15	4.81	61.63
2006	4.82	3.90	0.91	1.61	4.97	1.99	2.22	5.18	0.91	3.09	3.41	5.43	38.44
2007	5.99	2.45	1.10	0.99	1.57	3.97	3.94	4.18	1.27	4.79	1.89	4.03	36.17
2008	4.26	9.00	9.11	4.28	1.46	8.64	4.02	9.29	0.74	5.11	3.18	8.23	67.32
2009	2.33	3.26	7.11	7.73	9.17	2.78	3.88	3.19	5.22	3.39	2.35	9.57	59.98
2010	7.53	3.99	3.41	4.01	5.09	2.92	2.31	0.84	1.33	0.22	5.82	0.63	38.10
2011	4.33	4.04	5.00	0.92	0.78	1.66	5.11	1.87	2.26	1.84	1.94	3.75	33.50
2012	3.79	7.49	5.94	3.17	1.42	7.35	5.05	14.35	5.17	1.75	1.30	4.10	60.88
2013	1.05	12.86	2.99	3.54	0.64	3.72	13.39	13.17	2.14	1.96	3.91	4.44	63.81
2014	2.15	4.99	7.70	13.18	4.03	2.32	5.69	2.55	6.03	2.03	5.93	5.32	61.92
<b>2015</b>	<b>3.4</b>	<b>3.8</b>	<b>2.17</b>	<b>9.52</b>	<b>3.55</b>	<b>4.04</b>	<b>4.85</b>						31.33
<b>Deviation from the Average Monthly Rainfall</b>													
Inches	-1.51	-1.32	-3.30	5.25	0.02	-0.81	-1.36						-3.04
<b>Monthly Average Rainfall, 1952-2014</b>													
AVG.	4.91	5.12	5.47	4.27	3.53	4.85	6.21	5.29	4.41	2.78	3.38	4.10	54.32
<b>% of Annual Rainfall Occurring each Month</b>													
	9.0%	9.4%	10.1%	7.9%	6.5%	8.9%	11.4%	9.7%	8.1%	5.1%	6.2%	7.5%	
<b>Record High/Low for the Month</b>													
<b>LOW</b>	0.75	0.82	0.84	0.13	0.09	1.07	1.19	0.84	0.32	0.00	0.21	0.25	28.68
<b>HIGH</b>	13.62	12.86	11.54	13.18	10.03	12.90	13.71	14.35	16.84	9.61	8.14	15.31	80.56



## Jackson County Monthly Cumulative Rainfall, 1952 -2012

North Florida Research & Education Center Marianna, FL



YEAR	JAN	FEB	MAR	APR	MAY	JUNE	JULY	AUG	SEP	OCT	NOV	DEC
1952	1.14	10.02	14.50	16.61	21.74	22.86	28.81	37.62	40.71	41.36	44.62	48.04
1953	4.84	12.10	15.13	23.56	25.99	29.96	36.80	38.43	44.76	45.41	49.50	64.81
1954	1.33	4.82	7.44	10.02	<b>11.98</b>	15.44	<b>18.72</b>	<b>21.56</b>	<b>23.28</b>	<b>24.58</b>	<b>27.24</b>	<b>28.68</b>
1955	3.66	5.49	<b>6.33</b>	12.13	15.16	16.78	23.53	27.28	29.72	31.82	32.54	33.31
1956	3.59	8.77	12.54	14.58	18.61	24.06	32.58	36.67	43.11	48.19	48.47	51.81
1957	<b>0.75</b>	3.40	8.57	14.31	18.91	24.66	34.49	40.40	57.24	58.55	64.79	67.01
1958	4.48	8.09	12.82	20.04	25.61	31.61	40.00	43.45	47.13	49.01	50.76	53.08
1959	3.67	10.73	19.23	24.96	31.91	35.68	40.51	44.18	47.25	55.18	55.39	56.92
1960	3.36	10.44	13.85	20.65	23.85	28.60	33.57	38.37	44.59	46.59	47.06	49.41
1961	4.23	8.38	12.02	17.59	21.56	25.97	29.96	41.05	43.65	43.65	46.49	52.72
1962	1.72	4.52	12.65	15.93	18.79	22.46	30.43	36.50	39.57	42.39	47.55	49.22
1963	7.31	10.33	13.51	14.87	18.37	26.36	31.52	33.02	38.27	38.28	42.50	48.55
1964	10.80	<u>17.61</u>	24.02	<u>33.49</u>	35.72	41.40	50.62	53.69	61.16	<u>70.77</u>	<u>74.12</u>	<u>80.56</u>
1965	2.63	8.72	14.23	18.19	18.37	27.97	31.23	35.41	39.89	43.30	45.11	48.71
1966	5.56	15.40	17.97	18.74	24.54	27.67	30.92	40.74	45.83	47.24	49.27	53.89
1967	8.27	11.59	13.78	13.91	16.52	23.54	30.03	33.61	35.01	36.87	39.27	47.25
1968	1.28	3.58	6.98	<b>9.48</b>	12.87	<b>14.05</b>	19.50	24.11	27.10	28.51	33.62	38.96
1969	1.68	5.17	12.25	16.79	19.80	21.51	34.69	37.74	43.38	44.88	46.10	49.90
1970	4.16	13.36	22.22	24.05	25.86	29.55	34.59	42.60	43.09	47.49	49.70	52.83
1971	1.97	8.08	15.23	18.40	21.43	25.28	30.48	37.24	39.71	41.55	43.49	47.19
1972	3.62	9.65	16.06	16.44	19.31	28.20	31.98	37.37	39.51	41.95	45.24	49.01
1973	8.14	15.85	24.23	31.83	38.70	42.33	53.45	57.96	<u>63.36</u>	63.63	67.27	72.60
1974	5.24	11.04	13.70	17.10	20.88	22.44	25.73	33.74	38.42	39.26	41.40	44.29
1975	10.21	16.57	21.48	31.83	35.80	39.90	53.61	59.01	62.82	67.17	70.06	73.34
1976	6.99	8.49	13.38	15.25	24.14	27.22	30.25	33.72	39.19	45.37	51.09	55.06
1977	3.47	5.28	11.80	12.68	13.28	19.64	23.19	28.41	38.24	40.83	48.97	53.16
1978	7.28	10.56	17.81	22.46	29.19	32.98	40.23	45.13	46.11	46.31	52.32	55.97
1979	7.30	15.08	18.34	26.09	32.31	33.62	41.11	47.41	58.92	59.45	63.92	66.76
1980	6.58	9.54	21.08	30.37	34.87	38.37	44.24	46.77	51.33	56.04	57.56	57.81
1981	1.70	7.02	12.96	15.99	18.72	23.46	27.48	30.01	32.45	34.20	35.05	39.99
1982	4.17	9.78	12.69	18.62	24.01	27.01	34.52	38.94	44.94	47.59	49.93	59.07
1983	4.92	11.76	20.29	28.17	30.44	36.10	37.29	39.82	48.79	52.31	58.21	65.86
1984	5.49	10.50	19.12	25.41	27.91	33.22	45.23	50.99	51.31	52.91	54.54	55.34
1985	4.60	9.06	11.66	12.84	17.28	22.96	26.64	32.22	33.64	41.06	48.97	54.31
1986	5.68	15.95	19.16	19.99	22.25	24.10	26.85	30.97	33.32	35.54	39.94	45.62
1987	8.62	14.14	21.37	21.77	26.23	31.66	37.17	41.35	43.62	43.68	47.70	48.51
1988	5.57	11.97	20.38	23.07	23.35	24.42	29.85	33.83	39.36	41.34	44.62	45.85
1989	1.59	4.33	9.29	12.92	19.93	32.83	44.02	47.08	50.44	57.64	62.35	67.80
1990	5.26	9.83	14.38	17.38	20.60	24.62	28.27	31.18	32.03	33.37	34.30	37.72
1991	<u>13.62</u>	17.06	<u>26.06</u>	31.38	<u>41.41</u>	<u>46.71</u>	<u>57.38</u>	<u>61.27</u>	62.80	63.97	65.57	68.57
1992	8.37	14.66	22.58	25.08	26.49	37.65	46.34	53.06	56.25	58.33	65.73	68.66
1993	12.00	15.38	22.79	24.29	25.89	30.07	36.75	40.64	44.08	46.98	49.25	52.88
1994	8.64	11.17	17.42	21.76	23.58	34.99	45.94	55.02	61.46	69.08	71.61	75.40
1995	5.23	8.36	12.65	17.00	20.90	26.46	29.48	35.64	36.50	44.01	48.13	49.91

YEAR	JAN	FEB	MAR	APR	MAY	JUNE	JULY	AUG	SEP	OCT	NOV	DEC
1996	3.64	9.63	18.10	23.86	25.36	30.79	33.62	47.90	53.22	57.03	59.04	62.69
1997	6.68	11.97	14.60	24.68	30.59	37.00	42.73	47.38	51.16	53.26	60.11	68.55
1998	6.28	14.58	20.69	22.93	24.38	26.73	31.10	33.30	49.61	49.91	51.96	53.94
1999	6.95	9.85	13.46	14.96	21.67	30.66	39.30	43.32	47.65	50.78	54.34	56.84
2000	3.78	8.74	13.22	17.27	17.36	21.36	24.76	31.91	39.11	39.82	44.25	47.46
2001	2.16	2.98	12.98	14.97	17.49	25.73	30.39	38.60	40.50	42.01	43.71	44.49
2002	3.82	6.26	11.77	17.55	19.74	23.19	33.53	36.83	48.66	56.02	63.78	69.77
2003	2.30	9.33	17.51	22.40	25.51	31.62	39.46	45.45	47.84	51.42	54.46	57.58
2004	3.19	10.85	11.75	16.12	17.31	23.97	28.89	30.56	40.57	44.46	49.43	52.68
2005	3.33	5.64	14.69	21.73	23.40	30.87	40.31	52.02	53.64	53.67	56.82	61.63
2006	4.82	8.72	9.63	11.24	16.21	18.20	20.42	25.60	26.51	29.60	33.01	38.44
2007	5.99	8.44	9.54	10.53	12.10	16.07	20.01	24.19	25.46	30.25	32.14	36.17
2008	4.26	13.26	22.37	26.65	28.11	36.75	40.77	50.06	50.80	55.91	59.09	67.32
2009	2.33	5.59	12.70	20.43	29.60	32.38	36.26	39.45	44.67	48.06	50.41	59.98
2010	7.53	11.52	14.93	18.94	24.03	26.95	29.26	30.10	31.43	31.65	37.47	38.10
2011	4.33	8.37	13.37	14.29	15.07	16.73	21.84	23.71	25.97	27.81	29.75	33.50
2012	3.79	11.28	17.22	20.39	21.81	29.16	34.21	48.56	53.73	55.48	56.78	60.88
2013	1.05	13.91	16.90	20.44	21.08	24.80	38.19	51.36	53.50	55.46	59.37	63.81
2014	2.15	7.14	14.84	28.02	32.05	34.37	40.06	42.61	48.64	50.67	56.60	61.92
<b>2015</b>	<b>3.40</b>	<b>7.20</b>	<b>9.37</b>	<b>18.89</b>	<b>22.44</b>	<b>26.48</b>	<b>31.33</b>	<b>0.00</b>	<b>0.00</b>	<b>0.00</b>	<b>0.00</b>	<b>0.00</b>

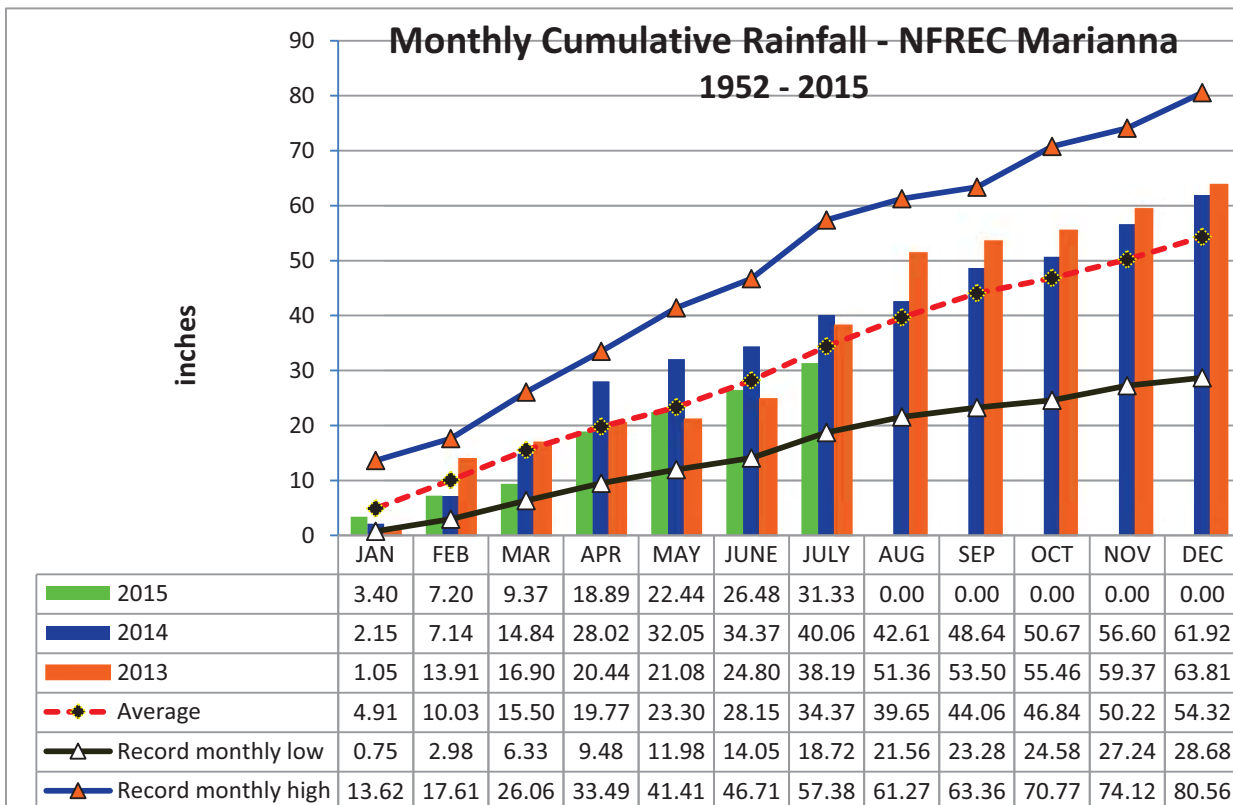
2014 Deviation from the Average Accumulation												
Inches	-1.51	-2.83	-6.13	-0.88	-0.86	-1.67	-3.04					

Average Accumulation, 1952-2014												
Inches	4.91	10.03	15.50	19.77	23.30	28.15	34.37	39.65	44.06	46.84	50.22	54.32

Record High/Low Accumulation												
<b>LOW</b>	0.75	2.98	6.33	9.48	11.98	14.05	18.72	21.56	23.28	24.58	27.24	28.68
<b>HIGH</b>	13.62	17.61	26.06	33.49	41.41	46.71	57.38	61.27	63.36	70.77	74.12	80.56



## 2015 FAWN Panhandle Weather Station Summary

FAWN Station	Data	Jan	Feb	Mar	Apr	May	June	July	Total
Monticello	Rain	5.8	5.8	2.7	5.8	4.4	4.8	4.3	33.5
	Hist Avg	4.5	4.6	6.1	4.1	3.4	5.7	7.0	35.4
	Deviation	1.3	1.2	-3.5	1.7	1.0	-0.9	-2.7	-1.9
Quincy	Rain	5.4	3.5	2.4	6.0	3.0	5.6	7.0	32.9
	Hist Avg	5.0	4.3	5.6	3.7	4.2	5.2	6.3	34.3
	Deviation	0.4	-0.8	-3.3	2.3	-1.2	0.4	0.7	-1.4
Carrabelle	Rain	4.3	5.2	1.9	4.8	0.1	3.3	4.7	24.3
	Hist Avg	3.8	3.7	4.9	3.0	2.7	5.3	7.3	30.7
	Deviation	0.5	1.5	-3.0	1.8	-2.6	-2.0	-2.6	-6.4
Marianna	Rain	3.4	3.8	2.2	9.5	3.6	4.0	4.9	31.3
	Hist Avg	4.9	5.1	5.5	4.3	3.5	4.9	6.2	34.4
	Deviation	-1.5	-1.3	-3.3	5.2	0.0	-0.8	-1.4	-3.0
DeFuniak	Rain	3.3	3.6	2.1	9.6	8.1	4.0	7.3	38.1
	Hist Avg	4.9	5.4	5.6	3.9	4.5	7.1	7.2	38.7
	Deviation	-1.6	-1.9	-3.5	5.7	3.5	-3.1	0.1	-0.6
Jay	Rain	4.4	3.5	1.3	12.6	2.7	4.3	9.2	37.9
	Hist Avg	5.5	5.3	6.6	4.8	4.8	5.8	7.0	39.8
	Deviation	-1.1	-1.9	-5.4	7.8	-2.2	-1.5	2.2	-1.9
<b>6 Station Average</b>		4.4	4.2	2.1	8.1	3.6	4.4	6.2	33.0

35.5  
-2.6

### FAWN 2015 Jan - July Rainfall Totals

