

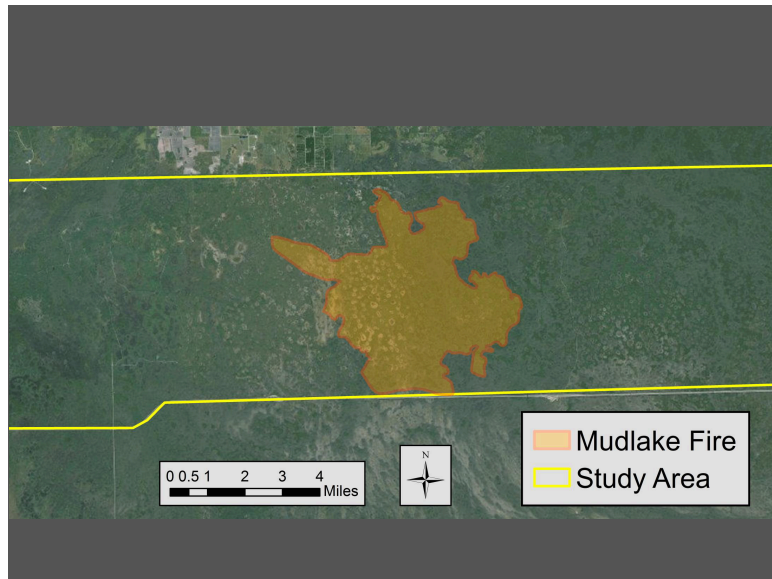
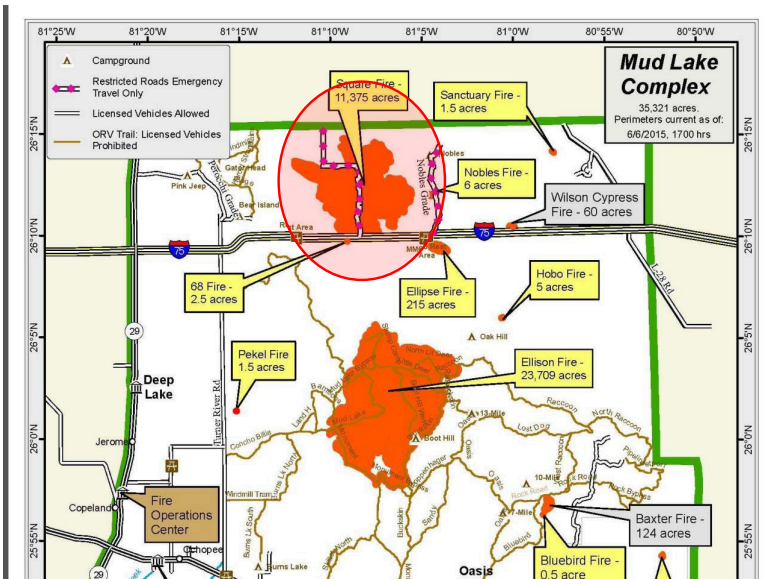
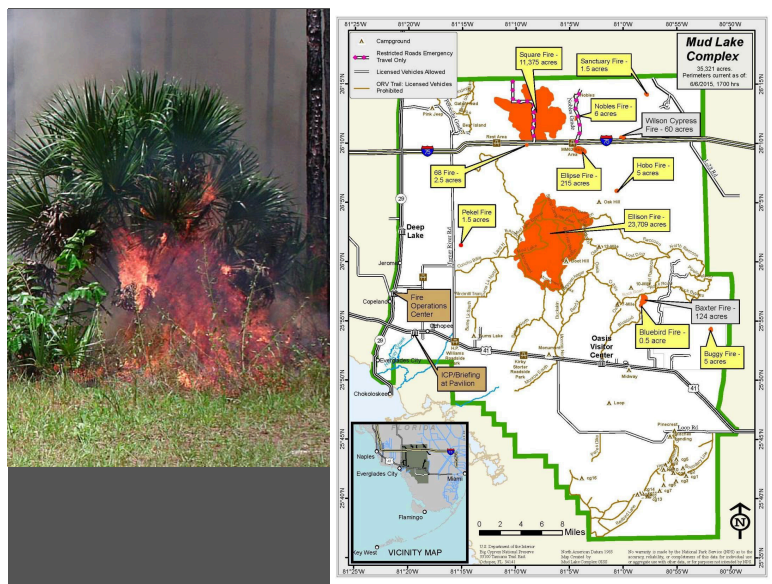
South Florida Deer Study

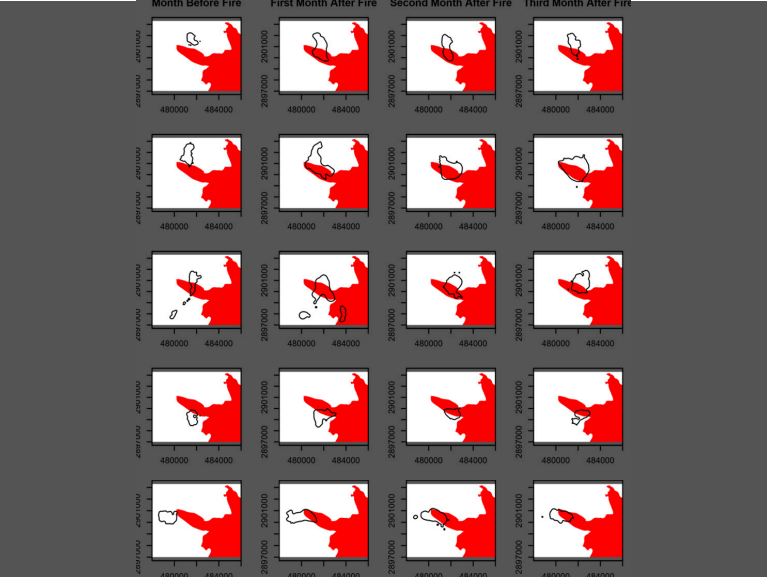
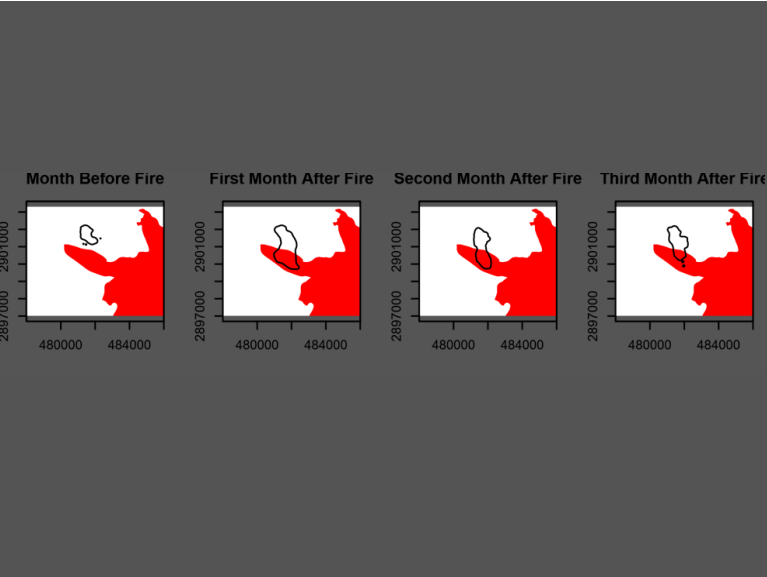
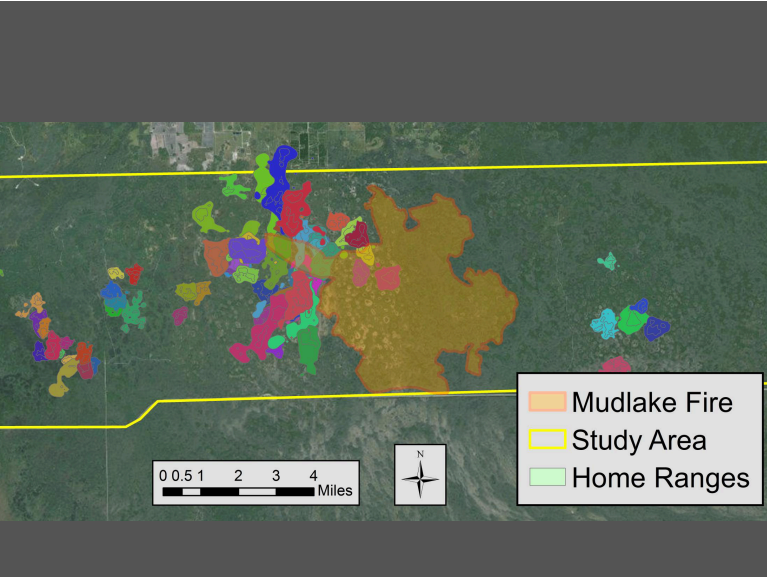
Logos and text on the slide include:

- FLORIDA FISH AND WILDLIFE CONSERVATION COMMISSION
- NATIONAL PARK SERVICE
- U.S. FISH & WILDLIFE SERVICE
- UGA DEER LAB
- VirginiaTech 1872 Invent the Future
- The JOSEPH W. JONES ECOLOGICAL RESEARCH CENTER at Ichauway

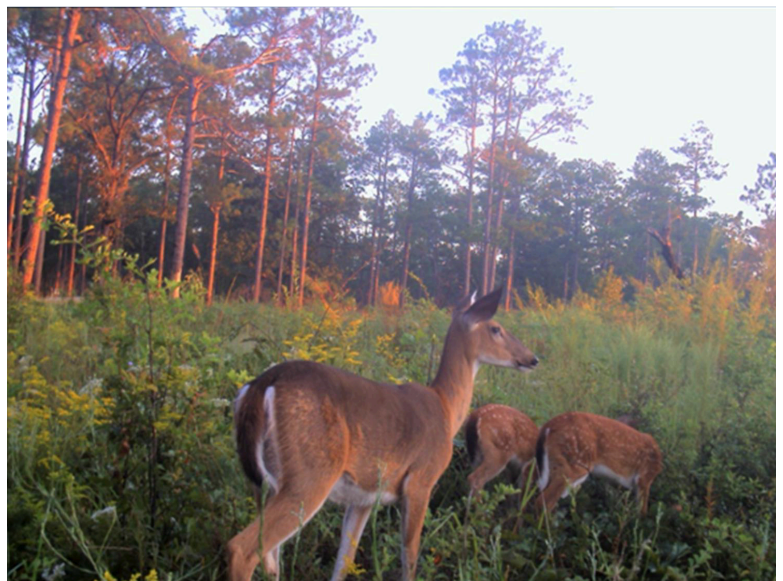
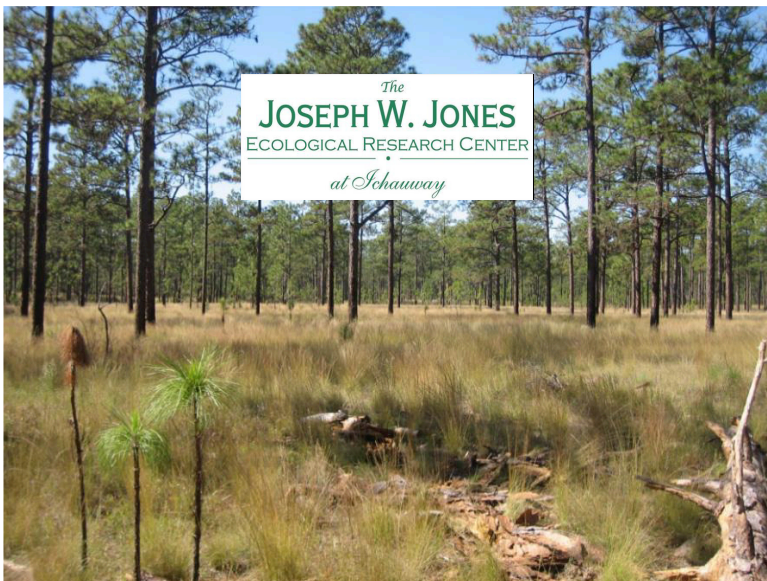


Captured Deer

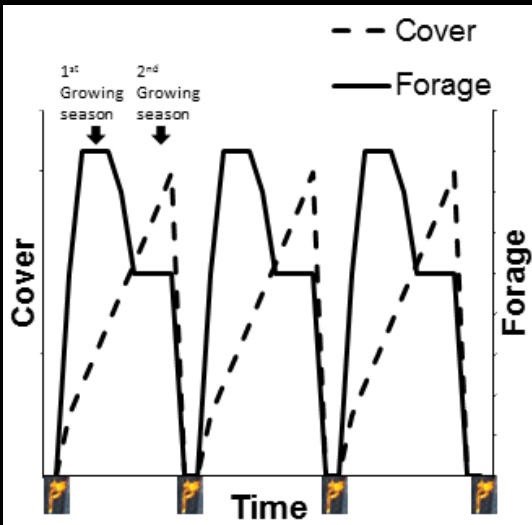




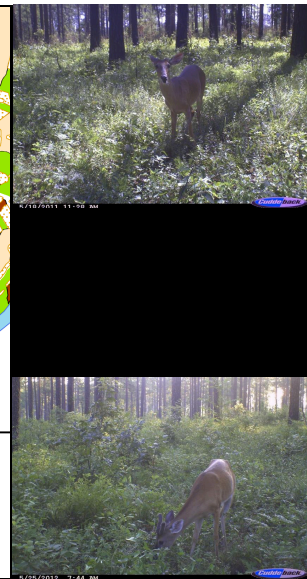
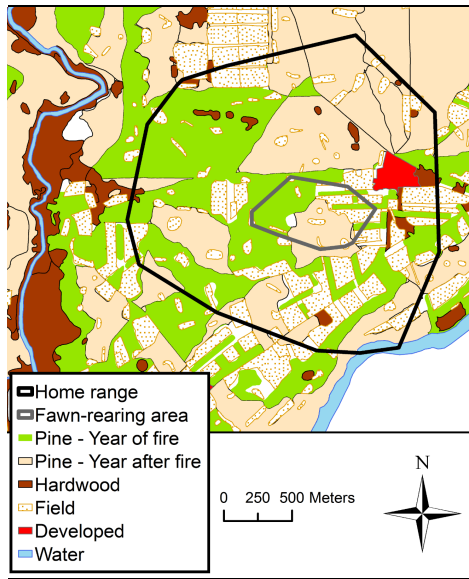
Deer moved into recent burns



Fire and fawning



Does fire influence perceived predation risk?



What did we learn from the studies?



Acknowledgements

Heather Abernathy
Richard Chandler
Mike Conner
Daniel Crawford
Hunter Ellsworth
Elina Garrison
Kevin Godesea
Marcelo Jorge
Karl Miller
Michael Sheriff
David Shindle
Robert Warren

 **VirginiaTech**
Invent the Future



 **GEORGIA**
DEPARTMENT OF NATURAL RESOURCES
WILDLIFE RESOURCES DIVISION

 **WARNELL**
SCHOOL OF FORESTRY

The **JOSEPH W. JONES**
ECOLOGICAL RESEARCH CENTER
at Schauway



Questions?