



ADDING VALUE TO FEEDER CALVES

VALUE DETERMINING FACTORS

- Sex
- Color
- Frame
- Horns ?
- Weight
- Fill
- Condition
- Personal Preference
- Muscling
- Vaccinations
- Background
- Breed

National Weekly Direct Slaughter Cattle

Georgia 400-500 lbs Feeder Steers VS 5-Area Weighted Average Slaughter Steers

USDA GRADES

- Frame
- Muscling

FRAME SIZE:

- Skeletal Size (Height & Length)
in relation to age.
- Relates to Finished weight.

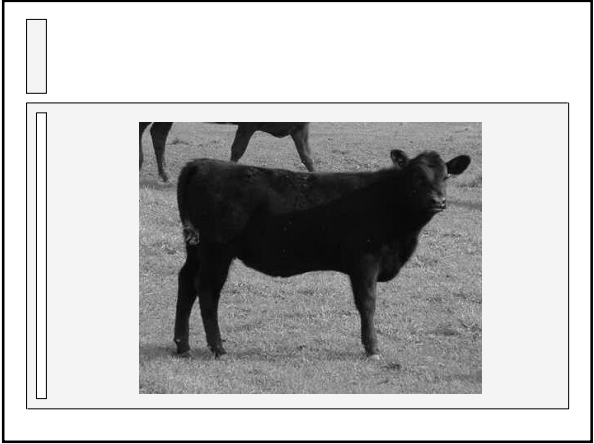
LARGE FRAME:

| <u>Steer</u> | <u>Heifer</u> |
|--------------|---------------|
| > 1250 lbs | > 1150 lbs |



MEDIUM FRAME:

| <u>Steer</u> | <u>Heifer</u> |
|---------------|---------------|
| 1100-1250 lbs | 1000-1150 lbs |



SMALL FRAME:

Steer
< 1100 lbs

Heifer
< 1000 lbs



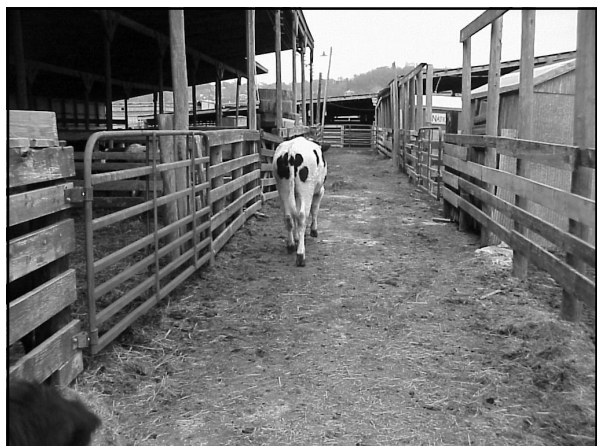
MUSCLING

■ Relates to muscle to bone ratio at a given degree of fatness and hence to yield grade.

Rear View

A diagram showing a black circle and a black inverted triangle side-by-side, representing the rear view of a cow. The circle is on the left and the triangle is on the right. They are both solid black shapes.





| | |
|--|---|
| | INFERIOR |
| | <ul style="list-style-type: none">■ Unmerchantable■ Double Muscled |