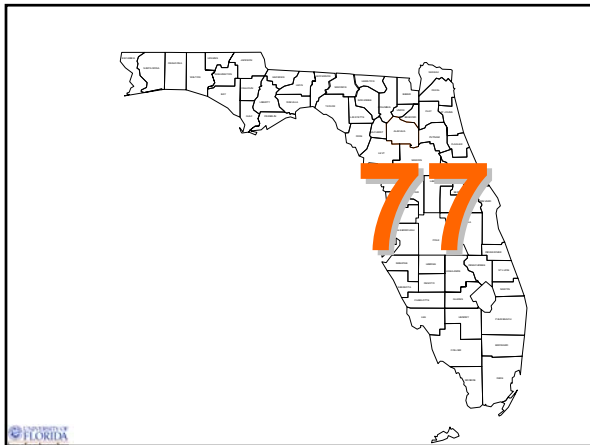
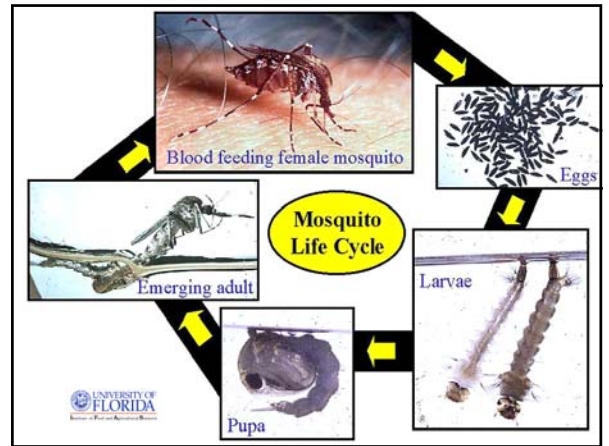


## Mosquito Control

Dr. Roxanne Rutledge, D.V.M., Assistant Professor  
University of Florida



**Adult Stage**  
terrestrial  
winged (only 1 pair!)  
blood and sugar feeding  
sucking mouthparts

mate once – female is set for life  
up to 200 eggs per batch  
blood required for egg development

*Culex nigripalpus*

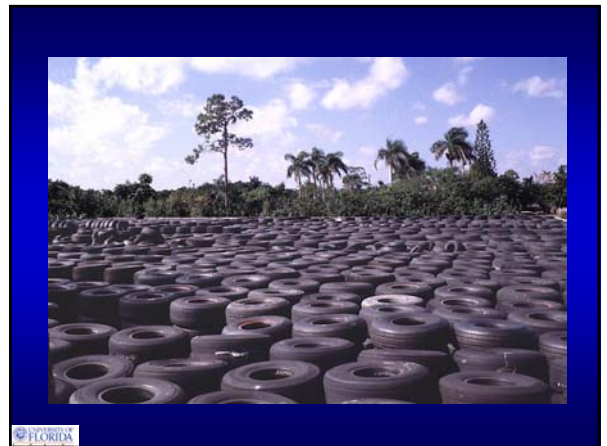
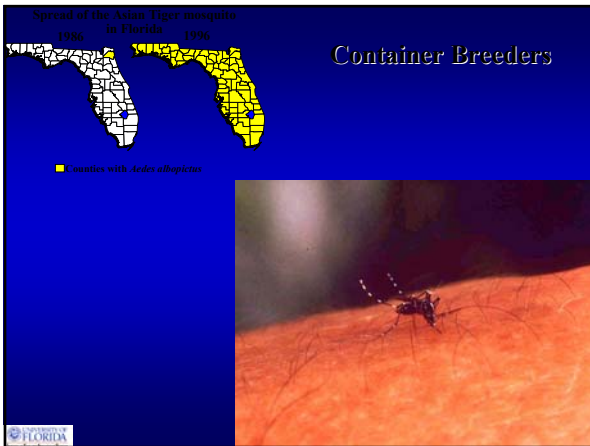
The slide features two photographs of adult mosquitoes. The top one is on a light background, and the bottom one is on a blue background. Text on the right describes the adult stage, and text on the left describes mating and egg development. The University of Florida logo is in the bottom left corner.



### Mosquito feeding:

- hosts
- time of day

A collage of images showing various mosquito hosts: a cow at a trough, a chicken, a dog, a cat, and a person's legs with mosquito bites. A cartoon mouse is also present. The University of Florida logo is in the bottom left corner.



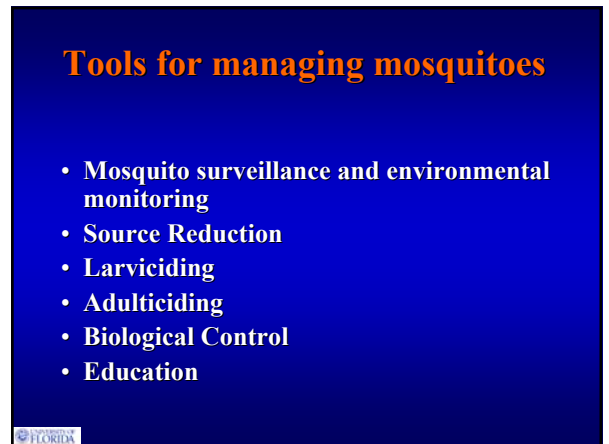




## Floodwater species



## Permanent Water Species



## Tools for managing mosquitoes

- Mosquito surveillance and environmental monitoring
- Source Reduction
- Larviciding
- Adulticiding
- Biological Control
- Education

## Electronic Repellers

### Bug Zappers

### Citrosa Plants: “Mosquito Plant”

## Bats

### Purple Martins

### Carbon Dioxide Attractant Traps

- Dump it out
- Clean it up
- Get the water moving!

## Mosquito Dunks

-Bti – *Bacillus thurnigiensis israeliensis*: Bacterial product that is specific for mosquitoes in the larval stage

-Larval control in ponds, bird baths, water sources that can not be dumped out.

Mosquito fish, Gambusia  
Under certain conditions

Methoprene  
Insect growth regulator

## Spraying for Adult Mosquitoes

Hand-held sprayers, foggers

Barriers  
Under certain conditions