



What Are Today's Goals?

- **Learn about BMPs, understand what they are and why they're needed for horse farms...and other industries**
- **Gain an understanding of FDEP Small Scale Horse Operation BMP Manual (see in handed out info.)**
- **Understand about the state FDACS Commercial equine operations BMP manual and the benefits it can offer the industry**

BMPs are:

Common sense and science-based.

Field-tested practices.

Effective farm care that helps protect water quality.

Why are they needed?

**These practices help protect
the ground and surface waters:
i.e...the aquifer and springs**

Water Quality Concerns:

Excess amounts of nutrients and sediments:

**Potentially leach/run-off into the
ground and surface waters.**

- This can harm fish and aquatic wildlife**
- It can also make the water undrinkable for all.**

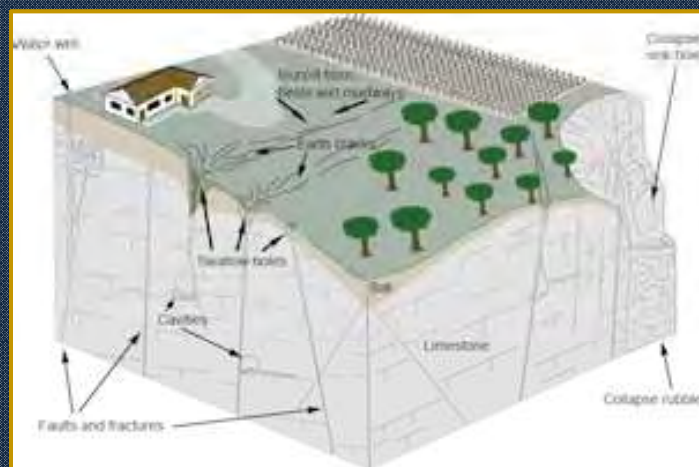
BMPs help prevent this problem

**The state is surrounded by water,
Like freshwater springs, ponds, rivers...**



**And, our sand based soils
are conducive to infiltration.**

Karst topography—In Florida, it's the soluble limestone underneath our sandy soils which gets dissolved



**This enables direct access to
Floridian aquifers that hold our ground water**

***BUT...that water is what
we ALL drink and use***

90% of our drinking water comes from ground water!

A farm/home

Potable water



So, who monitors BMPs?



And, is everyone regulated?

BMPs involve many industries:

Cow/calf

Nursery

Sod Operations

Silviculture

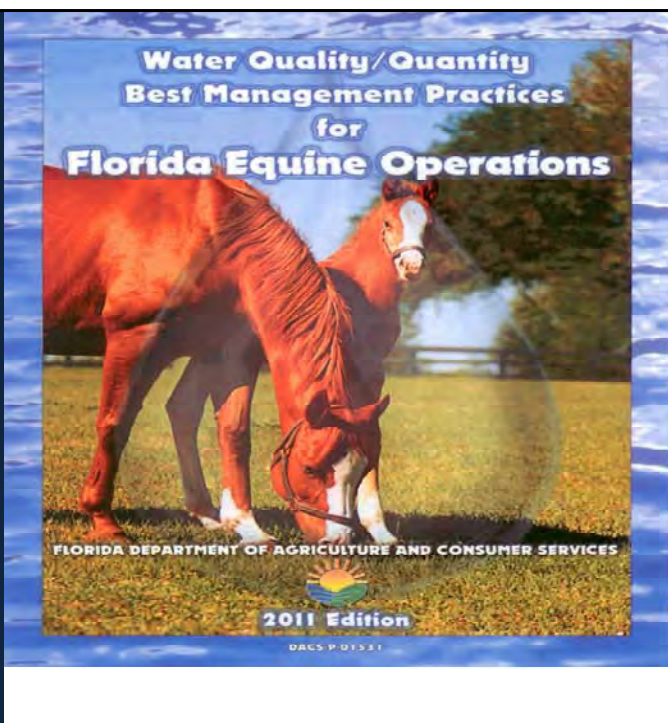
Citrus...
AND MORE!

FDACS Equine BMP Manual:

***For
Commercial
Operations:***

MANDATORY

***When farm
is in a
BMAP
area***



Small Scale Horse Operations:
Best Management Practices for
Water Resource Protection in Florida



Florida Department of Environmental Protection
October 2013

Just released:
FDEP Small Scale
Horse Operations
BMP Manual

Meant for
“non-commercial, or
hobby operations”

VOLUNTARY

BMP Manuals:

Why sign up? Why implement BMPs?
What's the benefit?

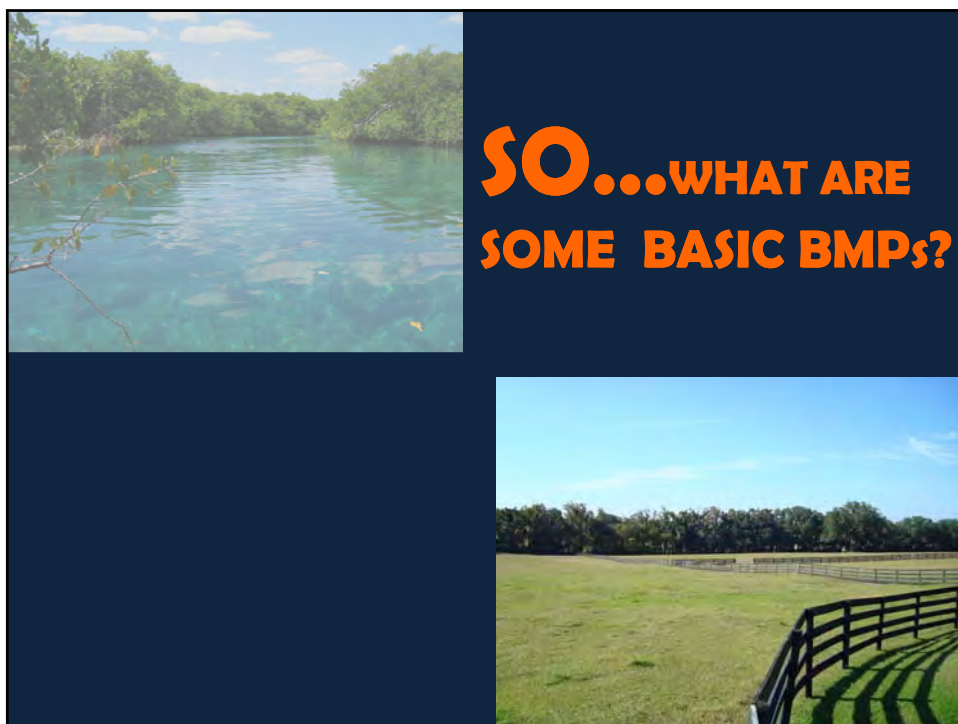


**IT'S FOR EQUINE and AG.
INDUSTRIES collectively**



Why Should a Farm Implement BMPs?

- **Demonstrates Environmental Stewardship**
- **Provides Presumption of Compliance with State Water Quality Standards**
- **Pre-empts Local Government Ordinances under Florida Right to Farm Act**
- **Pre-qualification for Cost-Share \$\$\$**
- **Possible Exemption from Water Management District Permits**
- **Cheaper than Self-Monitoring Alternative**



OVER/IMPROPER FERTILIZATION

Adding too much, or the wrong type of fertilizer:

- Prevents proper nutrient uptake by the grass, so...
- these nutrients can get into ground/surface waters
- Wrong pH of soil= Improper fertilizer utilization

This means wasted \$\$\$ and excess nutrients to the aquifer

Additional Pasture Management Problems

- **Lack of Routine Soil testing**
- **Insufficient weed control**
- **Improper mowing**

Pastures and Forage Crops for Horses

<http://edis.ifas.ufl.edu/pdffiles/AA/AA21600.pdf>

**Two
Good
Articles:**

Fertilizing and Liming Forage Crops

<http://edis.ifas.ufl.edu/pdffiles/AG/AG17900.pdf>

OVERSTOCKING THE LAND



OVERSTOCKING THE LAND MEANS:

Little or no grass = nutrient excesses
Increased soil erosion : sediment excesses
Go to ground/surface waters



Decreased property value: PRETTY SELLS BEST!
Decrease land usefulness
Increases upkeep and \$

***A Rule of Thumb:
ONE horse per 1.5 to 5 ACRES***



WHAT ABOUT THE MANURE?



MANURE/URINE:

Nitrogen

from horse manure and urine,

can:

**Increase algae growth,
harming aquatic life**

**Potentially make the water
undrinkable for ALL!**



Always remember:

IF IT TOUCHES THE GROUND, IT WILL REACH THE AQUIFER.

So...DEVELOP A PLAN TO HANDLE THE MANURE

**Spreading : use acceptable rates;
keep records**

**Hauling away: farm accepts
responsibility; keep records**

**Composting on-site: ideal
soil addition**

- Easily set-up/managed
- Reduce worms & weed seeds
- A slow-release fertilizer



For a farm: what is an ideal?

To go from this pile...



To this situation



FYI: Government web sites



FDACS – www.freshfromflorida.com Help with BMP manual
Office of Agriculture Water Policy www.floridaagwaterpolicy.com

FDEP – www.dep.state.fl.us Legislation/enforcement

NRCS – www.fl.nrcs.usda.gov Conservation assistance, cost-share

Check your Local County government web sites

And Some Composting information:

