



Jackson County 2012 Weather Data



Doug Mayo
Jackson County Extension Director

1952-2008 Rainfall Data compiled by
Ed Jowers, Emeritus County Extension Director

Data provided by Florida Automated Weather Station (FAWN)
UF/IFAS North Florida Research and Education Center
Greenwood, Florida



<http://fawn.ifas.ufl.edu/station.php?id=130>

Tower Name	Tower Number	Latitude Degree, Minutes	Latitude Degrees Minutes, Seconds	Latitude Degrees Decimal	Longitude Degree, Minutes	Longitude Degrees Minutes, Seconds	Longitude Degrees Decimal	Elevation Feet
Marianna	130.00	N 30°51.000'	N 30°50'00.00"	N 30.85000°	-85°09.910'	-85°09'54.60"	-85.16516°	115'

2012 Jackson Weather Summary

Month	Air Temp			Soil Temp			Rainfall Inches	Dev from Avg
	High	Low	Avg	High	Low	Avg		
January	80	26	55	65	40	53	3.79	-1.22
February	77	24	57	64	41	56	7.49	2.49
March	89	40	68	80	50	66	5.94	0.47
April	95	41	69	85	57	70	3.17	-0.97

Source: UF/IFAS Marianna FAWN Station

2010 Rainfall Deficit -16.17

2011 Rainfall Deficit -20.42

2012 Rainfall Deviation 0.77

Extended Drought Total -35.82

Total days in 2012 <32° and >95° 10 1

January Daily Weather Data

Temperature							Precipitation		
Date	Air Temp 2 ft			Soil Temp 4 inch			Rain	Evapo Trans	
	Avg	Min	Max	Avg	Min	Max	Inches	Inches	
1-Jan-12	63	52	76	57	54	60	0.01	0.06	
2-Jan-12	48	40	55	51	46	55	0.00	0.04	
3-Jan-12	36	26	45	44	41	48	0.00	0.03	
4-Jan-12	39	22	57	43	39	48	0.00	0.03	
5-Jan-12	49	34	68	46	42	52	0.00	0.05	
6-Jan-12	52	41	70	49	46	54	0.00	0.05	
7-Jan-12	58	44	77	52	48	57	0.00	0.06	
8-Jan-12	63	54	78	55	51	60	0.02	0.06	
9-Jan-12	60	52	76	56	53	59	0.00	0.06	
10-Jan-12	62	53	69	55	54	58	0.01	0.05	
11-Jan-12	59	47	65	56	52	58	0.31	0.05	
12-Jan-12	54	42	71	52	49	57	0.00	0.06	
13-Jan-12	39	30	49	47	44	50	0.00	0.03	
14-Jan-12	42	26	59	45	40	50	0.00	0.04	
15-Jan-12	44	31	66	46	41	52	0.00	0.04	
16-Jan-12	50	31	70	47	43	52	0.00	0.05	
17-Jan-12	60	41	74	50	46	55	0.66	0.06	
18-Jan-12	55	41	62	53	49	55	1.07	0.05	
19-Jan-12	48	34	66	49	44	54	0.00	0.05	
20-Jan-12	60	48	73	52	48	56	0.10	0.06	
21-Jan-12	67	61	77	57	54	60	0.23	0.07	
22-Jan-12	66	62	72	59	57	61	0.05	0.05	
23-Jan-12	68	61	77	60	57	63	0.62	0.07	
24-Jan-12	65	60	72	61	59	63	0.05		
25-Jan-12	67	58	80	61	58	65	0.00	0.07	
26-Jan-12	66	59	77	61	58	64	0.65	0.07	
27-Jan-12	57	42	65	58	54	61	0.01	0.06	
28-Jan-12	52	37	69	54	50	59	0.00	0.06	
29-Jan-12	49	35	64	53	49	57	0.00	0.06	
30-Jan-12	47	30	68	50	45	56	0.00	0.06	
31-Jan-12	54	39	74	52	47	57	0.00	0.07	
High			80			65			
Low		26			40				
Average	55	43	68	53	49	57			
Days over 95 ^o	0			Total for Month		3.79	1.62	3.8	1.6
				Number of Rain Days		13.00		13.0	
Days below 32 ^o	7			Historic Average		5.01		5.0	
				Deviation from Average		-1.22		-1.2	
				Net Gain/loss (Rain - ET)			2.17		2.2

Year Cumulative
Rain ET

February Daily Weather Data

Date	Temperature						Precipitation		
	Air Temp 2 ft			Soil Temp 4 inch			Rain	Evapo Trans	
	Avg	Min	Max	Avg	Min	Max	Inches	Inches	
1-Feb-12	57	43	67	53	49	55	0.42	0.06	
2-Feb-12	61	53	71	56	54	60	0.00	0.06	
3-Feb-12	62	52	73	56	53	60	0.00	0.07	
4-Feb-12	65	58	77	59	55	63	0.00	0.08	
5-Feb-12	65	57	74	60	58	63	0.00	0.06	
6-Feb-12	62	53	74	59	56	63	0.00	0.07	
7-Feb-12	58	49	70	58	56	62	0.00	0.07	
8-Feb-12	56	44	68	56	52	60	0.00	0.08	
9-Feb-12	50	41	63	54	50	58	0.00	0.07	
10-Feb-12	51	41	61	53	50	56	0.00	0.06	
11-Feb-12	46	31	53	51	47	54	0.00	0.06	
12-Feb-12	35	25	48	46	42	52	0.00	0.06	
13-Feb-12	41	24	59	46	41	52	0.00	0.06	
14-Feb-12	51	37	68	48	45	52	0.11	0.07	
15-Feb-12	60	51	73	54	50	60	0.00	0.08	
16-Feb-12	67	62	75	58	56	62	0.70	0.07	
17-Feb-12	62	55	68	59	57	60	0.00	0.06	
18-Feb-12	60	53	70	57	55	59	4.45	0.06	
19-Feb-12	59	46	69	57	54	61	0.24	0.08	
20-Feb-12	50	40	63	54	49	60	0.00	0.08	
21-Feb-12	57	48	72	55	52	61	0.02	0.08	
22-Feb-12	63	53	72	58	55	61	0.00	0.07	
23-Feb-12	71	67	76	61	59	63	0.00	0.07	
24-Feb-12	66	55	76	61	56	63	0.34	0.07	
25-Feb-12	52	46	59	55	52	58	0.00	0.07	
26-Feb-12	49	47	52	53	52	54	0.04	0.05	
27-Feb-12	56	51	60	53	52	55	1.17	0.05	
28-Feb-12	64	57	75	58	54	63	0.00	0.08	
40968	68	63	77	61	59	64	0.00	0.08	
High			77			64			
Low		24			41				
Average	57	48	68	56	52	59			
Days over 95 ^o	0			Total for Month		7.49	1.98	11.3	3.6
				Number of Rain Days		9.00		22.0	
Days below 32 ^o	3			59 year Average		5.00		10.0	
				Deviation from Average		2.49		1.3	
				Net Gain/loss (Rain - ET)			5.51		7.7

Year Cumulative	
Rain	ET
11.3	3.6
22.0	
10.0	
1.3	
	7.7

March Daily Weather Data

Temperature							Precipitation				
Date	Air Temp 2 ft			Soil Temp 4 inch			Rain	Evapo Trans			
	Avg	Min	Max	Avg	Min	Max	Inches	Inches			
1-Mar-12	72	67	81	63	61	66	0.00	0.09			
2-Mar-12	72	67	80	64	62	67	0.43	0.1			
3-Mar-12	62	48	73	62	55	65	4.75	0.07			
4-Mar-12	51	42	62	55	52	59	0.01	0.09			
5-Mar-12	58	41	73	55	50	61	0.00	0.1			
6-Mar-12	57	40	73	55	50	62	0.00	0.1			
7-Mar-12	63	53	77	58	54	64	0.00	0.1			
8-Mar-12	67	54	81	61	55	67	0.00	0.11			
9-Mar-12	63	53	72	61	59	64	0.01	0.07			
10-Mar-12	61	47	75	60	55	66	0.00	0.1			
11-Mar-12	65	56	74	60	57	64	0.00	0.08			
12-Mar-12	68	63	76	63	60	66	0.00	0.09			
13-Mar-12	68	60	82	64	60	69	0.04	0.1			
14-Mar-12	70	58	87	66	61	73	0.01	0.12			
15-Mar-12	72	59	89	68	62	75	0.00	0.13			
16-Mar-12	73	60	87	69	63	75	0.00	0.13			
17-Mar-12	71	58	88	69	64	76	0.00	0.13			
18-Mar-12	72	57	88	70	64	76	0.00	0.13			
19-Mar-12	72	57	88	70	65	76	0.00	0.13			
20-Mar-12	72	60	85	71	66	77	0.00	0.14			
21-Mar-12	72	62	86	71	66	77	0.00	0.13			
22-Mar-12	73	60	86	71	66	77	0.00	0.13			
23-Mar-12	71	63	82	70	66	73	0.17	0.09			
24-Mar-12	70	61	82	69	64	76	0.00	0.13			
25-Mar-12	66	52	79	68	63	75	0.00	0.13			
26-Mar-12	67	51	84	69	62	77	0.00	0.13			
27-Mar-12	71	53	89	71	64	79	0.00	0.14			
28-Mar-12	70	57	86	71	65	78	0.00	0.13			
29-Mar-12	71	57	86	72	67	80	0.00	0.14			
30-Mar-12	69	61	83	71	68	76	0.29	0.1			
31-Mar-12	68	64	77	68	66	71	0.23	0.09			
High			89			80					
Low		40			50						
Average	68	56	81	66	61	71					
Days over 95 ^o	0			Total for Month			5.94	3.45	17.2	7.1	
				Number of Rain Days			9.00			31.0	
				59 year Average			5.47			15.5	
Days below 32 ^o	0			Deviation from Average			0.47				
				Net Gain/loss (Rain - ET)			2.49			1.7	
								Year Cumulative			
								Rain	ET		
								17.2	7.1		
								31.0			
								15.5			
								1.7			
									10.2		

April Daily Weather Data

Date	Temperature						Precipitation	
	Air Temp 2 ft			Soil Temp 4 inch			Rain	Evapo Trans
	Avg	Min	Max	Avg	Min	Max	Inches	Inches
1-Apr-12	75	66	87	71	66	79	0.00	0.15
2-Apr-12	75	65	88	73	67	81	0.00	0.16
3-Apr-12	71	65	84	72	69	78	1.76	0.1
4-Apr-12	71	63	80	70	67	75	0.00	0.12
5-Apr-12	67	58	79	68	65	73	0.03	0.11
6-Apr-12	63	55	75	66	63	71	0.00	0.12
7-Apr-12	63	50	77	66	60	73	0.00	0.14
8-Apr-12	65	48	80	67	61	75	0.00	0.14
9-Apr-12	69	57	83	69	63	77	0.00	0.15
10-Apr-12	68	53	83	70	64	77	0.00	0.15
11-Apr-12	66	54	77	70	65	76	0.00	0.14
12-Apr-12	61	49	75	69	63	76	0.00	0.14
13-Apr-12	65	47	81	69	63	77	0.00	0.14
14-Apr-12	70	56	84	70	65	76	0.00	0.14
15-Apr-12	72	63	85	72	67	78	0.00	0.14
16-Apr-12	73	58	87	72	67	77	0.00	0.13
17-Apr-12	73	59	87	74	68	80	0.00	0.14
18-Apr-12	70	64	79	72	70	75	1.03	0.09
19-Apr-12	73	65	84	73	68	79	0.00	0.15
20-Apr-12	72	62	85	73	69	79	0.00	0.14
21-Apr-12	66	57	77	69	67	71	0.35	0.08
22-Apr-12	65	57	74	67	63	71	0.00	0.15
23-Apr-12	58	48	66	63	59	69	0.00	0.14
24-Apr-12	59	41	74	63	57	71	0.00	0.14
25-Apr-12	67	49	83	67	60	75	0.00	0.16
26-Apr-12	70	55	85	70	63	77	0.00	0.16
27-Apr-12	72	58	86	72	66	79	0.00	0.16
28-Apr-12	72	56	89	73	67	81	0.00	0.17
29-Apr-12	75	57	93	75	68	83	0.00	0.17
30-Apr-12	80	65	95	78	71	85	0.00	0.18
High			95			85		
Low		41			57			
Average	69	57	82	70	65	76		
Days over 95 ^o	1			Total for Month			3.17	4.20
				Number of Rain Days			4.00	
Days below 32 ^o	0			59 year Average			4.14	
				Deviation from Average			-0.97	
				Net Gain/loss (Rain - ET)			-1.03	

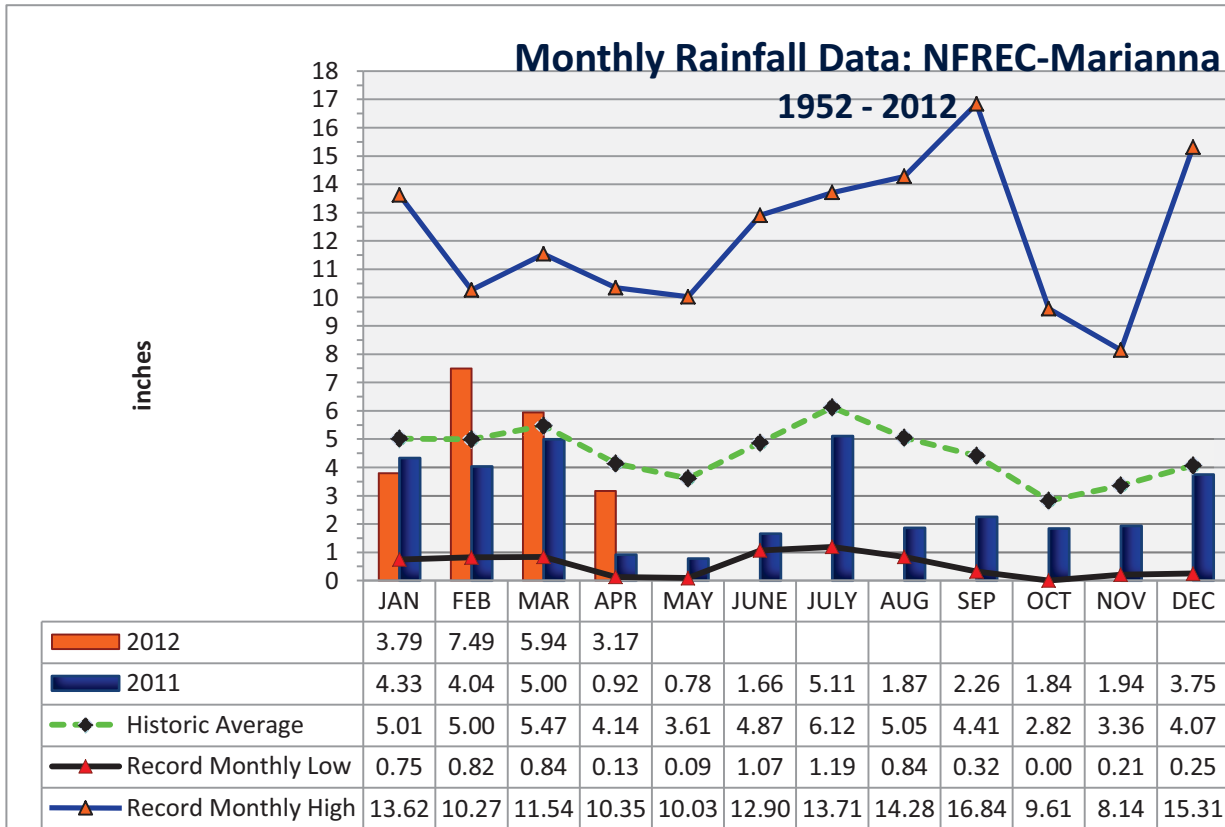
Year Cumulative	
Rain	ET
20.4	11.3
35.0	
19.6	
0.8	
	9.1

Jackson County
Monthly Total Rainfall, 1952 - 2012
No FL Research & Education Cntr, Marianna, FL



YEAR	JAN	FEB	MAR	APR	MAY	JUNE	JULY	AUG	SEP	OCT	NOV	DEC	TOTAL
1952	1.14	8.88	4.48	2.11	5.13	1.12	5.95	8.81	3.09	0.65	3.26	3.42	48.04
1953	4.84	7.26	3.03	8.43	2.43	3.97	6.84	1.63	6.33	0.65	4.09	<u>15.31</u>	64.81
1954	1.33	3.49	2.62	2.58	1.96	3.46	3.28	2.84	1.72	1.30	2.66	1.44	28.68
1955	3.66	1.83	0.84	5.80	3.03	1.62	6.75	3.75	2.44	2.10	0.72	0.77	33.31
1956	3.59	5.18	3.77	2.04	4.03	5.45	8.52	4.09	6.44	5.08	0.28	3.34	51.81
1957	0.75	2.65	5.17	5.74	4.60	5.75	9.83	5.91	<u>16.84</u>	1.31	6.24	2.22	67.01
1958	4.48	3.61	4.73	7.22	5.57	6.00	8.39	3.45	3.68	1.88	1.75	2.32	53.08
1959	3.67	7.06	8.50	5.73	6.95	3.77	4.83	3.67	3.07	7.93	0.21	1.53	56.92
1960	3.36	7.08	3.41	6.80	3.20	4.75	4.97	4.80	6.22	2.00	0.47	2.35	49.41
1961	4.23	4.15	3.64	5.57	3.97	4.41	3.99	11.09	2.60	0.00	2.84	6.23	52.72
1962	1.72	2.80	8.13	3.28	2.86	3.67	7.97	6.07	3.07	2.82	5.16	1.67	49.22
1963	7.31	3.02	3.18	1.36	3.50	7.99	5.16	1.50	5.25	0.01	4.22	6.05	48.55
1964	10.80	6.81	6.41	9.47	2.23	5.68	9.22	3.07	7.47	<u>9.61</u>	3.35	6.44	<u>80.56</u>
1965	2.63	6.09	5.51	3.96	0.18	9.60	3.26	4.18	4.48	3.41	1.81	3.60	48.71
1966	5.56	9.84	2.57	0.77	5.80	3.13	3.25	9.82	5.09	1.41	2.03	4.62	53.89
1967	8.27	3.32	2.19	0.13	2.61	7.02	6.49	3.58	1.40	1.86	2.40	7.98	47.25
1968	1.28	2.30	3.40	2.50	3.39	1.18	5.45	4.61	2.99	1.41	5.11	5.34	38.96
1969	1.68	3.49	7.08	4.54	3.01	1.71	13.18	3.05	5.64	1.50	1.22	3.80	49.90
1970	4.16	9.20	8.86	1.83	1.81	3.69	5.04	8.01	0.49	4.40	2.21	3.13	52.83
1971	1.97	6.11	7.15	3.17	3.03	3.85	5.20	6.76	2.47	1.84	1.94	3.70	47.19
1972	3.62	6.03	6.41	0.38	2.87	8.89	3.78	5.39	2.14	2.44	3.29	3.77	49.01
1973	8.14	7.71	8.38	7.60	6.87	3.63	11.12	4.51	5.40	0.27	3.64	5.33	72.60
1974	5.24	5.80	2.66	3.40	3.78	1.56	3.29	8.01	4.68	0.84	2.14	2.89	44.29
1975	10.21	6.36	4.91	<u>10.35</u>	3.97	4.10	<u>13.71</u>	5.40	3.81	4.35	2.89	3.28	73.34
1976	6.99	1.50	4.89	1.87	8.89	3.08	3.03	3.47	5.47	6.18	5.72	3.97	55.06
1977	3.47	1.81	6.52	0.88	0.60	6.36	3.55	5.22	9.83	2.59	<u>8.14</u>	4.19	53.16
1978	7.28	3.28	7.25	4.65	6.73	3.79	7.25	4.90	0.98	0.20	6.01	3.65	55.97
1979	7.30	7.78	3.26	7.75	6.22	1.31	7.49	6.30	11.51	0.53	4.47	2.84	66.76
1980	6.58	2.96	<u>11.54</u>	9.29	4.50	3.50	5.87	2.53	4.56	4.71	1.52	0.25	57.81
1981	1.70	5.32	5.94	3.03	2.73	4.74	4.02	2.53	2.44	1.75	0.85	4.94	39.99
1982	4.17	5.61	2.91	5.93	5.39	3.00	7.51	4.42	6.00	2.65	2.34	9.14	59.07
1983	4.92	6.84	8.53	7.88	2.27	5.66	1.19	2.53	8.97	3.52	5.90	7.65	65.86
1984	5.49	5.01	8.62	6.29	2.50	5.31	12.01	5.76	0.32	1.60	1.63	0.80	55.34
1985	4.60	4.46	2.60	1.18	4.44	5.68	3.68	5.58	1.42	7.42	7.91	5.34	54.31
1986	5.68	<u>10.27</u>	3.21	0.83	2.26	1.85	2.75	4.12	2.35	2.22	4.40	5.68	45.62
1987	8.62	5.52	7.23	0.40	4.46	5.43	5.51	4.18	2.27	0.06	4.02	0.81	48.51
1988	5.57	6.40	8.41	2.69	0.28	1.07	5.43	3.98	5.53	1.98	3.28	1.23	45.85
1989	1.59	2.74	4.96	3.63	7.01	<u>12.90</u>	11.19	3.06	3.36	7.20	4.71	5.45	67.80
1990	5.26	4.57	4.55	3.00	3.22	4.02	3.65	2.91	0.85	1.34	0.93	3.42	37.72
1991	<u>13.62</u>	3.44	9.00	5.32	<u>10.03</u>	5.30	10.67	3.89	1.53	1.17	1.60	3.00	68.57
1992	8.37	6.29	7.92	2.50	1.41	11.16	8.69	6.72	3.19	2.08	7.40	2.93	68.66
1993	12.00	3.38	7.41	1.50	1.60	4.18	6.68	3.89	3.44	2.90	2.27	3.63	52.88
1994	8.64	2.53	6.25	4.34	1.82	11.41	10.95	9.08	6.44	7.62	2.53	3.79	75.40
1995	5.23	3.13	4.29	4.35	3.90	5.56	3.02	6.16	0.86	7.51	4.12	1.78	49.91

YEAR	JAN	FEB	MAR	APR	MAY	JUNE	JULY	AUG	SEP	OCT	NOV	DEC	TOTAL
1996	3.64	5.99	8.47	5.76	1.50	5.43	2.83	14.28	5.32	3.81	2.01	3.65	62.69
1997	6.68	5.29	2.63	10.08	5.91	6.41	5.73	4.65	3.78	2.10	6.85	8.44	68.55
1998	6.28	8.30	6.11	2.24	1.45	2.35	4.37	2.20	16.31	0.30	2.05	1.98	53.94
1999	6.95	2.90	3.61	1.50	6.71	8.99	8.64	4.02	4.33	3.13	3.56	2.50	56.84
2000	3.78	4.96	4.48	4.05	0.09	4.00	3.40	7.15	7.20	0.71	4.43	3.21	47.46
2001	2.16	0.82	10.00	1.99	2.52	8.24	4.66	8.21	1.90	1.51	1.70	0.78	44.49
2002	3.82	2.44	5.51	5.78	2.19	3.45	10.34	3.30	11.83	7.36	7.76	5.99	69.77
2003	2.30	7.03	8.18	4.89	3.11	6.11	7.84	5.99	2.39	3.58	3.04	3.12	57.58
2004	3.19	7.66	0.90	4.37	1.19	6.66	4.92	1.67	10.01	3.89	4.97	3.25	52.68
2005	3.33	2.31	9.05	7.04	1.67	7.47	9.44	11.71	1.62	0.03	3.15	4.81	61.63
2006	4.82	3.90	0.91	1.61	4.97	1.99	2.22	5.18	0.91	3.09	3.41	5.43	38.44
2007	5.99	2.45	1.10	0.99	1.57	3.97	3.94	4.18	1.27	4.79	1.89	4.03	36.17
2008	4.26	9.00	9.11	4.28	1.46	8.64	4.02	9.29	0.74	5.11	3.18	8.23	67.32
2009	2.33	3.26	7.11	7.73	9.17	2.78	3.88	3.19	5.22	3.39	2.35	9.57	59.98
2010	7.53	3.99	3.41	4.01	5.09	2.92	2.31	0.84	1.33	0.22	5.82	0.63	38.10
2011	4.33	4.04	5.00	0.92	0.78	1.66	5.11	1.87	2.26	1.84	1.94	3.75	33.50
2012	3.79	7.49	5.94	3.17									20.39
Deviation from the Average Monthly Rainfall													
Inches	-1.22	2.49	0.47	-0.97									-33.53
Monthly Average Rainfall, 1952-2012													
AVG.	5.01	5.00	5.47	4.14	3.61	4.87	6.12	5.05	4.41	2.82	3.36	4.07	53.92
% of Annual Rainfall Occuring each Month													
	9.4%	9.4%	10.3%	7.8%	6.8%	9.1%	11.5%	9.5%	8.3%	5.3%	6.3%	7.6%	
Record High/Low for the Month													
LOW	0.75	0.82	0.84	0.13	0.09	1.07	1.19	0.84	0.32	0.00	0.21	0.25	28.68
HIGH	13.62	10.27	11.54	10.35	10.03	12.90	13.71	14.28	16.84	9.61	8.14	15.31	80.56



Jackson County
Monthly Cumulative Rainfall, 1952 -2012
North Florida Research & Education Center Marianna, FL



YEAR	JAN	FEB	MAR	APR	MAY	JUNE	JULY	AUG	SEP	OCT	NOV	DEC
1952	1.14	10.02	14.50	16.61	21.74	22.86	28.81	37.62	40.71	41.36	44.62	48.04
1953	4.84	12.10	15.13	23.56	25.99	29.96	36.80	38.43	44.76	45.41	49.50	64.81
1954	1.33	4.82	7.44	10.02	11.98	15.44	18.72	21.56	23.28	24.58	27.24	28.68
1955	3.66	5.49	6.33	12.13	15.16	16.78	23.53	27.28	29.72	31.82	32.54	33.31
1956	3.59	8.77	12.54	14.58	18.61	24.06	32.58	36.67	43.11	48.19	48.47	51.81
1957	0.75	3.40	8.57	14.31	18.91	24.66	34.49	40.40	57.24	58.55	64.79	67.01
1958	4.48	8.09	12.82	20.04	25.61	31.61	40.00	43.45	47.13	49.01	50.76	53.08
1959	3.67	10.73	19.23	24.96	31.91	35.68	40.51	44.18	47.25	55.18	55.39	56.92
1960	3.36	10.44	13.85	20.65	23.85	28.60	33.57	38.37	44.59	46.59	47.06	49.41
1961	4.23	8.38	12.02	17.59	21.56	25.97	29.96	41.05	43.65	43.65	46.49	52.72
1962	1.72	4.52	12.65	15.93	18.79	22.46	30.43	36.50	39.57	42.39	47.55	49.22
1963	7.31	10.33	13.51	14.87	18.37	26.36	31.52	33.02	38.27	38.28	42.50	48.55
1964	10.80	<u>17.61</u>	24.02	<u>33.49</u>	35.72	41.40	50.62	53.69	61.16	<u>70.77</u>	<u>74.12</u>	<u>80.56</u>
1965	2.63	8.72	14.23	18.19	18.37	27.97	31.23	35.41	39.89	43.30	45.11	48.71
1966	5.56	15.40	17.97	18.74	24.54	27.67	30.92	40.74	45.83	47.24	49.27	53.89
1967	8.27	11.59	13.78	13.91	16.52	23.54	30.03	33.61	35.01	36.87	39.27	47.25
1968	1.28	3.58	6.98	9.48	12.87	14.05	19.50	24.11	27.10	28.51	33.62	38.96
1969	1.68	5.17	12.25	16.79	19.80	21.51	34.69	37.74	43.38	44.88	46.10	49.90
1970	4.16	13.36	22.22	24.05	25.86	29.55	34.59	42.60	43.09	47.49	49.70	52.83
1971	1.97	8.08	15.23	18.40	21.43	25.28	30.48	37.24	39.71	41.55	43.49	47.19
1972	3.62	9.65	16.06	16.44	19.31	28.20	31.98	37.37	39.51	41.95	45.24	49.01
1973	8.14	15.85	24.23	31.83	38.70	42.33	53.45	57.96	<u>63.36</u>	63.63	67.27	72.60
1974	5.24	11.04	13.70	17.10	20.88	22.44	25.73	33.74	38.42	39.26	41.40	44.29
1975	10.21	16.57	21.48	31.83	35.80	39.90	53.61	59.01	62.82	67.17	70.06	73.34
1976	6.99	8.49	13.38	15.25	24.14	27.22	30.25	33.72	39.19	45.37	51.09	55.06
1977	3.47	5.28	11.80	12.68	13.28	19.64	23.19	28.41	38.24	40.83	48.97	53.16
1978	7.28	10.56	17.81	22.46	29.19	32.98	40.23	45.13	46.11	46.31	52.32	55.97
1979	7.30	15.08	18.34	26.09	32.31	33.62	41.11	47.41	58.92	59.45	63.92	66.76
1980	6.58	9.54	21.08	30.37	34.87	38.37	44.24	46.77	51.33	56.04	57.56	57.81
1981	1.70	7.02	12.96	15.99	18.72	23.46	27.48	30.01	32.45	34.20	35.05	39.99
1982	4.17	9.78	12.69	18.62	24.01	27.01	34.52	38.94	44.94	47.59	49.93	59.07
1983	4.92	11.76	20.29	28.17	30.44	36.10	37.29	39.82	48.79	52.31	58.21	65.86
1984	5.49	10.50	19.12	25.41	27.91	33.22	45.23	50.99	51.31	52.91	54.54	55.34
1985	4.60	9.06	11.66	12.84	17.28	22.96	26.64	32.22	33.64	41.06	48.97	54.31
1986	5.68	15.95	19.16	19.99	22.25	24.10	26.85	30.97	33.32	35.54	39.94	45.62
1987	8.62	14.14	21.37	21.77	26.23	31.66	37.17	41.35	43.62	43.68	47.70	48.51
1988	5.57	11.97	20.38	23.07	23.35	24.42	29.85	33.83	39.36	41.34	44.62	45.85
1989	1.59	4.33	9.29	12.92	19.93	32.83	44.02	47.08	50.44	57.64	62.35	67.80
1990	5.26	9.83	14.38	17.38	20.60	24.62	28.27	31.18	32.03	33.37	34.30	37.72
1991	<u>13.62</u>	17.06	<u>26.06</u>	31.38	<u>41.41</u>	<u>46.71</u>	<u>57.38</u>	<u>61.27</u>	62.80	63.97	65.57	68.57
1992	8.37	14.66	22.58	25.08	26.49	37.65	46.34	53.06	56.25	58.33	65.73	68.66
1993	12.00	15.38	22.79	24.29	25.89	30.07	36.75	40.64	44.08	46.98	49.25	52.88
1994	8.64	11.17	17.42	21.76	23.58	34.99	45.94	55.02	61.46	69.08	71.61	75.40
1995	5.23	8.36	12.65	17.00	20.90	26.46	29.48	35.64	36.50	44.01	48.13	49.91

YEAR	JAN	FEB	MAR	APR	MAY	JUNE	JULY	AUG	SEP	OCT	NOV	DEC
1996	3.64	9.63	18.10	23.86	25.36	30.79	33.62	47.90	53.22	57.03	59.04	62.69
1997	6.68	11.97	14.60	24.68	30.59	37.00	42.73	47.38	51.16	53.26	60.11	68.55
1998	6.28	14.58	20.69	22.93	24.38	26.73	31.10	33.30	49.61	49.91	51.96	53.94
1999	6.95	9.85	13.46	14.96	21.67	30.66	39.30	43.32	47.65	50.78	54.34	56.84
2000	3.78	8.74	13.22	17.27	17.36	21.36	24.76	31.91	39.11	39.82	44.25	47.46
2001	2.16	2.98	12.98	14.97	17.49	25.73	30.39	38.60	40.50	42.01	43.71	44.49
2002	3.82	6.26	11.77	17.55	19.74	23.19	33.53	36.83	48.66	56.02	63.78	69.77
2003	2.30	9.33	17.51	22.40	25.51	31.62	39.46	45.45	47.84	51.42	54.46	57.58
2004	3.19	10.85	11.75	16.12	17.31	23.97	28.89	30.56	40.57	44.46	49.43	52.68
2005	3.33	5.64	14.69	21.73	23.40	30.87	40.31	52.02	53.64	53.67	56.82	61.63
2006	4.82	8.72	9.63	11.24	16.21	18.20	20.42	25.60	26.51	29.60	33.01	38.44
2007	5.99	8.44	9.54	10.53	12.10	16.07	20.01	24.19	25.46	30.25	32.14	36.17
2008	4.26	13.26	22.37	26.65	28.11	36.75	40.77	50.06	50.80	55.91	59.09	67.32
2009	2.33	5.59	12.70	20.43	29.60	32.38	36.26	39.45	44.67	48.06	50.41	59.98
2010	7.53	11.52	14.93	18.94	24.03	26.95	29.26	30.10	31.43	31.65	37.47	38.10
2011	4.33	8.37	13.37	14.29	15.07	16.73	21.84	23.71	25.97	27.81	29.75	33.50
2012	3.79	11.28	17.22	20.39								

2012 Deviation from the Average Accumulation

Inches	-1.22	1.27	1.74	0.77
--------	-------	------	------	------

Average Accumulation, 1952-2011

Inches	5.01	10.01	15.48	19.62	23.22	28.09	34.21	39.26	43.67	46.49	49.85	53.92
--------	------	-------	-------	-------	-------	-------	-------	-------	-------	-------	-------	-------

Record High/Low Accumulation

LOW	0.75	2.98	6.33	9.48	11.98	14.05	18.72	21.56	23.28	24.58	27.24	28.68
HIGH	13.62	17.61	26.06	33.49	41.41	46.71	57.38	61.27	63.36	70.77	74.12	80.56

