



## Jackson County 2012 Weather Data



**Doug Mayo**  
Jackson County Extension Director

1952-2008 Rainfall Data compiled by  
Ed Jowers, Emeritus County Extension Director

Data provided by Florida Automated Weather Station (FAWN)  
UF/IFAS North Florida Research and Education Center  
Greenwood, Florida



<http://fawn.ifas.ufl.edu/station.php?id=130>

Tower Name	Tower Number	Latitude Degree, Minutes	Latitude Degrees Minutes, Seconds	Latitude Degrees Decimal	Longitude Degree, Minutes	Longitude Degrees Minutes, Seconds	Longitude Degrees Decimal	Elevation Feet
Marianna	130.00	N 30°51.000'	N 30°50'00.00"	N 30.85000°	-85°09.910'	-85°09'54.60"	-85.16516°	115'

## 2012 Marianna FAWN Weather Summary

Month	Air Temp			Soil Temp			Rainfall Inches	Dev from Avg
	High	Low	Avg	High	Low	Avg		
January	80	22	55	65	39	53	3.79	-1.22
February	77	24	57	64	41	56	7.49	2.49
March	89	40	68	80	50	66	5.94	0.47
April	95	41	69	85	57	70	3.17	-0.97
May	100	54	77	94	67	79	1.42	-2.15
June	97	61	79	93	70	79	7.35	2.44
July	99	69	82	94	75	83	5.05	-1.05
August	96	66	79	89	72	78	14.35	9.15
September	94	51	76	85	67	76	5.17	0.75
October	89	37	67	77	53	67	1.75	-1.05
November	86	28	56	67	47	56	1.30	-2.03
Annual	100	22	71	94	39	70	56.78	6.81

Data: UF/IFAS Florida Automated Weather Network Marianna Station

2010 Rainfall Deficit -16.17  
 2011 Rainfall Deficit -20.42  
 2012 Rainfall Deviation 6.81  
 Extended Drought Total -29.78

Total days in 2012 <32° and >95° 12 29

# January Daily Weather Data

Temperature							Precipitation		
Date	Air Temp 2 ft			Soil Temp 4 inch			Rain	Evapo Trans	
	Avg	Min	Max	Avg	Min	Max	Inches	Inches	
1-Jan-12	63	52	76	57	54	60	0.01	0.06	
2-Jan-12	48	40	55	51	46	55	0.00	0.04	
3-Jan-12	36	26	45	44	41	48	0.00	0.03	
4-Jan-12	39	22	57	43	39	48	0.00	0.03	
5-Jan-12	49	34	68	46	42	52	0.00	0.05	
6-Jan-12	52	41	70	49	46	54	0.00	0.05	
7-Jan-12	58	44	77	52	48	57	0.00	0.06	
8-Jan-12	63	54	78	55	51	60	0.02	0.06	
9-Jan-12	60	52	76	56	53	59	0.00	0.06	
10-Jan-12	62	53	69	55	54	58	0.01	0.05	
11-Jan-12	59	47	65	56	52	58	0.31	0.05	
12-Jan-12	54	42	71	52	49	57	0.00	0.06	
13-Jan-12	39	30	49	47	44	50	0.00	0.03	
14-Jan-12	42	26	59	45	40	50	0.00	0.04	
15-Jan-12	44	31	66	46	41	52	0.00	0.04	
16-Jan-12	50	31	70	47	43	52	0.00	0.05	
17-Jan-12	60	41	74	50	46	55	0.66	0.06	
18-Jan-12	55	41	62	53	49	55	1.07	0.05	
19-Jan-12	48	34	66	49	44	54	0.00	0.05	
20-Jan-12	60	48	73	52	48	56	0.10	0.06	
21-Jan-12	67	61	77	57	54	60	0.23	0.07	
22-Jan-12	66	62	72	59	57	61	0.05	0.05	
23-Jan-12	68	61	77	60	57	63	0.62	0.07	
24-Jan-12	65	60	72	61	59	63	0.05		
25-Jan-12	67	58	80	61	58	65	0.00	0.07	
26-Jan-12	66	59	77	61	58	64	0.65	0.07	
27-Jan-12	57	42	65	58	54	61	0.01	0.06	
28-Jan-12	52	37	69	54	50	59	0.00	0.06	
29-Jan-12	49	35	64	53	49	57	0.00	0.06	
30-Jan-12	47	30	68	50	45	56	0.00	0.06	
31-Jan-12	54	39	74	52	47	57	0.00	0.07	
<b>High</b>			<b>80</b>			<b>65</b>			
<b>Low</b>		<b>22</b>			<b>39</b>				
<b>Average</b>	<b>55</b>	43	68	<b>53</b>	49	57			
Days over 95 <sup>o</sup>	0			<b>Total for Month</b>		<b>3.79</b>	1.62	3.8	1.6
				<b>Number of Rain Days</b>		13.00		13.0	
Days below 32 <sup>o</sup>	7			<b>Historic Average</b>		5.01		5.0	
				<b>Deviation from Average</b>		-1.22		-1.2	
				<b>Net Gain/loss (Rain - ET)</b>			<b>2.17</b>		2.2

Year Cumulative  
Rain      ET

## February Daily Weather Data

Date	Temperature						Precipitation		
	Air Temp 2 ft			Soil Temp 4 inch			Rain	Evapo Trans	
	Avg	Min	Max	Avg	Min	Max	Inches	Inches	
1-Feb-12	57	43	67	53	49	55	0.42	0.06	
2-Feb-12	61	53	71	56	54	60	0.00	0.06	
3-Feb-12	62	52	73	56	53	60	0.00	0.07	
4-Feb-12	65	58	77	59	55	63	0.00	0.08	
5-Feb-12	65	57	74	60	58	63	0.00	0.06	
6-Feb-12	62	53	74	59	56	63	0.00	0.07	
7-Feb-12	58	49	70	58	56	62	0.00	0.07	
8-Feb-12	56	44	68	56	52	60	0.00	0.08	
9-Feb-12	50	41	63	54	50	58	0.00	0.07	
10-Feb-12	51	41	61	53	50	56	0.00	0.06	
11-Feb-12	46	31	53	51	47	54	0.00	0.06	
12-Feb-12	35	25	48	46	42	52	0.00	0.06	
13-Feb-12	41	24	59	46	41	52	0.00	0.06	
14-Feb-12	51	37	68	48	45	52	0.11	0.07	
15-Feb-12	60	51	73	54	50	60	0.00	0.08	
16-Feb-12	67	62	75	58	56	62	0.70	0.07	
17-Feb-12	62	55	68	59	57	60	0.00	0.06	
18-Feb-12	60	53	70	57	55	59	4.45	0.06	
19-Feb-12	59	46	69	57	54	61	0.24	0.08	
20-Feb-12	50	40	63	54	49	60	0.00	0.08	
21-Feb-12	57	48	72	55	52	61	0.02	0.08	
22-Feb-12	63	53	72	58	55	61	0.00	0.07	
23-Feb-12	71	67	76	61	59	63	0.00	0.07	
24-Feb-12	66	55	76	61	56	63	0.34	0.07	
25-Feb-12	52	46	59	55	52	58	0.00	0.07	
26-Feb-12	49	47	52	53	52	54	0.04	0.05	
27-Feb-12	56	51	60	53	52	55	1.17	0.05	
28-Feb-12	64	57	75	58	54	63	0.00	0.08	
29-Feb-12	68	63	77	61	59	64	0.00	0.08	
<b>High</b>			<b>77</b>			<b>64</b>			
<b>Low</b>		<b>24</b>			<b>41</b>				
<b>Average</b>	<b>57</b>	48	68	<b>56</b>	52	59			
Days over 95 <sup>o</sup>	0			<b>Total for Month</b>		<b>7.49</b>	1.98	11.3	3.6
				<b>Number of Rain Days</b>		9.00		22.0	
Days below 32 <sup>o</sup>	3			<b>59 year Average</b>		5.00		10.0	
				<b>Deviation from Average</b>		2.49		1.3	
				<b>Net Gain/loss (Rain - ET)</b>			<b>5.51</b>		7.7

<b>Year Cumulative</b>	
<b>Rain</b>	<b>ET</b>
11.3	3.6
22.0	
10.0	
1.3	
	7.7

## March Daily Weather Data

Date	Temperature						Precipitation					
	Air Temp 2 ft			Soil Temp 4 inch			Rain	Evapo Trans				
	Avg	Min	Max	Avg	Min	Max	Inches	Inches				
1-Mar-12	72	67	81	63	61	66	0.00	0.09				
2-Mar-12	72	67	80	64	62	67	0.43	0.1				
3-Mar-12	62	48	73	62	55	65	4.75	0.07				
4-Mar-12	51	42	62	55	52	59	0.01	0.09				
5-Mar-12	58	41	73	55	50	61	0.00	0.1				
6-Mar-12	57	40	73	55	50	62	0.00	0.1				
7-Mar-12	63	53	77	58	54	64	0.00	0.1				
8-Mar-12	67	54	81	61	55	67	0.00	0.11				
9-Mar-12	63	53	72	61	59	64	0.01	0.07				
10-Mar-12	61	47	75	60	55	66	0.00	0.1				
11-Mar-12	65	56	74	60	57	64	0.00	0.08				
12-Mar-12	68	63	76	63	60	66	0.00	0.09				
13-Mar-12	68	60	82	64	60	69	0.04	0.1				
14-Mar-12	70	58	87	66	61	73	0.01	0.12				
15-Mar-12	72	59	89	68	62	75	0.00	0.13				
16-Mar-12	73	60	87	69	63	75	0.00	0.13				
17-Mar-12	71	58	88	69	64	76	0.00	0.13				
18-Mar-12	72	57	88	70	64	76	0.00	0.13				
19-Mar-12	72	57	88	70	65	76	0.00	0.13				
20-Mar-12	72	60	85	71	66	77	0.00	0.14				
21-Mar-12	72	62	86	71	66	77	0.00	0.13				
22-Mar-12	73	60	86	71	66	77	0.00	0.13				
23-Mar-12	71	63	82	70	66	73	0.17	0.09				
24-Mar-12	70	61	82	69	64	76	0.00	0.13				
25-Mar-12	66	52	79	68	63	75	0.00	0.13				
26-Mar-12	67	51	84	69	62	77	0.00	0.13				
27-Mar-12	71	53	89	71	64	79	0.00	0.14				
28-Mar-12	70	57	86	71	65	78	0.00	0.13				
29-Mar-12	71	57	86	72	67	80	0.00	0.14				
30-Mar-12	69	61	83	71	68	76	0.29	0.1				
31-Mar-12	68	64	77	68	66	71	0.23	0.09				
<b>High</b>			<b>89</b>			<b>80</b>						
<b>Low</b>		<b>40</b>			<b>50</b>							
<b>Average</b>	<b>68</b>	<b>56</b>	<b>81</b>	<b>66</b>	<b>61</b>	<b>71</b>						
Days over 95 <sup>o</sup>	0			<b>Total for Month</b>			<b>5.94</b>	3.45	17.2	7.1		
				<b>Number of Rain Days</b>			9.00			31.0		
Days below 32 <sup>o</sup>	0			<b>59 year Average</b>			5.47			15.5		
				<b>Deviation from Average</b>			0.47			1.7		
				<b>Net Gain/loss (Rain - ET)</b>						<b>2.49</b>		

<b>Year Cumulative</b>	
<b>Rain</b>	<b>ET</b>
17.2	7.1
31.0	
15.5	
1.7	
	10.2

## April Daily Weather Data

Date	Temperature						Precipitation	
	Air Temp 2 ft			Soil Temp 4 inch			Rain	Evapo Trans
	Avg	Min	Max	Avg	Min	Max	Inches	Inches
1-Apr-12	75	66	87	71	66	79	0.00	0.15
2-Apr-12	75	65	88	73	67	81	0.00	0.16
3-Apr-12	71	65	84	72	69	78	1.76	0.1
4-Apr-12	71	63	80	70	67	75	0.00	0.12
5-Apr-12	67	58	79	68	65	73	0.03	0.11
6-Apr-12	63	55	75	66	63	71	0.00	0.12
7-Apr-12	63	50	77	66	60	73	0.00	0.14
8-Apr-12	65	48	80	67	61	75	0.00	0.14
9-Apr-12	69	57	83	69	63	77	0.00	0.15
10-Apr-12	68	53	83	70	64	77	0.00	0.15
11-Apr-12	66	54	77	70	65	76	0.00	0.14
12-Apr-12	61	49	75	69	63	76	0.00	0.14
13-Apr-12	65	47	81	69	63	77	0.00	0.14
14-Apr-12	70	56	84	70	65	76	0.00	0.14
15-Apr-12	72	63	85	72	67	78	0.00	0.14
16-Apr-12	73	58	87	72	67	77	0.00	0.13
17-Apr-12	73	59	87	74	68	80	0.00	0.14
18-Apr-12	70	64	79	72	70	75	1.03	0.09
19-Apr-12	73	65	84	73	68	79	0.00	0.15
20-Apr-12	72	62	85	73	69	79	0.00	0.14
21-Apr-12	66	57	77	69	67	71	0.35	0.08
22-Apr-12	65	57	74	67	63	71	0.00	0.15
23-Apr-12	58	48	66	63	59	69	0.00	0.14
24-Apr-12	59	41	74	63	57	71	0.00	0.14
25-Apr-12	67	49	83	67	60	75	0.00	0.16
26-Apr-12	70	55	85	70	63	77	0.00	0.16
27-Apr-12	72	58	86	72	66	79	0.00	0.16
28-Apr-12	72	56	89	73	67	81	0.00	0.17
29-Apr-12	75	57	93	75	68	83	0.00	0.17
30-Apr-12	80	65	95	78	71	85	0.00	0.18
<b>High</b>			<b>95</b>			<b>85</b>		
<b>Low</b>		<b>41</b>			<b>57</b>			
<b>Average</b>	<b>69</b>	<b>57</b>	<b>82</b>	<b>70</b>	<b>65</b>	<b>76</b>		
Days over 95 <sup>o</sup>	1			<b>Total for Month</b>			<b>3.17</b>	4.20
				<b>Number of Rain Days</b>			4.00	
Days below 32 <sup>o</sup>	0			<b>59 year Average</b>			4.14	
				<b>Deviation from Average</b>			-0.97	
				<b>Net Gain/loss (Rain - ET)</b>			<b>-1.03</b>	

<b>Year Cumulative</b>	
<b>Rain</b>	<b>ET</b>
20.4	11.3
35.0	
19.6	
0.8	
	9.1

# May Daily Weather Data

Temperature							Precipitation	
Date	Air Temp 2 ft			Soil Temp 4 inch			Rain	Evapo Trans
	Avg	Min	Max	Avg	Min	Max	Inches	Inches
1-May-12	79	66	92	79	73	86	0.00	0.18
2-May-12	78	68	89	78	74	83	0.00	0.14
3-May-12	75	67	86	76	73	80	0.21	0.12
4-May-12	76	67	88	76	71	83	0.00	0.15
5-May-12	77	67	93	78	72	85	0.00	0.16
6-May-12	74	66	92	78	74	86	0.26	0.15
7-May-12	76	63	91	77	70	85	0.00	0.18
8-May-12	74	64	90	78	72	85	0.01	0.15
9-May-12	72	62	86	76	71	82	0.22	0.13
10-May-12	69	57	82	74	67	82	0.00	0.17
11-May-12	71	54	85	75	67	83	0.00	0.16
12-May-12	74	65	85	74	71	77	0.01	0.11
13-May-12	72	66	80	72	70	77	0.52	0.11
14-May-12	76	67	88	75	69	83	0.00	0.16
15-May-12	77	67	87	76	70	83	0.00	0.17
16-May-12	74	65	87	76	72	82	0.14	0.14
17-May-12	75	62	88	76	69	83	0.05	0.17
18-May-12	75	62	86	77	70	84	0.00	0.18
19-May-12	74	62	87	78	72	86	0.00	0.18
20-May-12	73	56	88	79	71	87	0.00	0.18
21-May-12	76	60	92	79	73	86	0.00	0.16
22-May-12	75	63	89	79	73	86	0.00	0.17
23-May-12	77	62	91	80	73	87	0.00	0.17
24-May-12	80	67	96	82	75	91	0.00	0.19
25-May-12	83	66	99	83	76	91	0.00	0.2
26-May-12	85	70	100	85	78	92	0.00	0.2
27-May-12	85	73	97	86	79	94	0.00	0.22
28-May-12	79	72	90	83	79	89	0.00	0.16
29-May-12	82	72	93	83	78	90	0.00	0.19
30-May-12	83	72	97	85	79	93	0.00	0.21
31-May-12	78	68	94	84	79	89	0.00	0.17
<b>High</b>			<b>100</b>			<b>94</b>		
<b>Low</b>		<b>54</b>			<b>67</b>			
<b>Average</b>	<b>77</b>	65	90	<b>79</b>	73	86		
				<b>Total for Month</b>			<b>1.42</b>	5.13
Days over 95 <sup>o</sup>				5	<b>Number of Rain Days</b>			8.00
Days of 100 <sup>o</sup>				1	<b>59 year Average</b>			3.57
Days below 32 <sup>o</sup>				0	<b>Deviation from Average</b>			-2.15
				<b>Net Gain/loss (Rain - ET)</b>			<b>-3.71</b>	

<b>Year Cumulative</b>	
<b>Rain</b>	<b>ET</b>
21.8	16.4
43.0	
23.2	
-1.4	
	5.4

## June Daily Weather Data

Temperature							Precipitation	
Date	Air Temp 2 ft			Soil Temp 4 inch			Rain	Evapo Trans
	Avg	Min	Max	Avg	Min	Max	Inches	Inches
1-Jun-12	78	68	88	82	78	87	0.01	0.16
2-Jun-12	74	61	87	82	75	90	0.00	0.19
3-Jun-12	80	63	96	84	76	93	0.00	0.2
4-Jun-12	82	69	95	85	79	93	0.00	0.2
5-Jun-12	78	72	92	82	78	89	0.78	0.13
6-Jun-12	78	69	93	79	74	87	4.09	0.17
7-Jun-12	76	71	84	78	75	83	0.01	0.14
8-Jun-12	75	69	81	75	73	78	0.00	0.1
9-Jun-12	75	71	84	74	72	78	0.12	0.1
10-Jun-12	75	70	87	75	72	79	0.33	0.12
11-Jun-12	78	70	90	75	71	79	0.67	N/A
12-Jun-12	81	74	90	78	74	84	0.00	0.2
13-Jun-12	81	71	92	79	74	85	0.00	0.18
14-Jun-12	77	70	95	79	75	87	0.48	0.17
15-Jun-12	78	69	88	78	73	83	0.01	0.19
16-Jun-12	77	66	88	78	72	84	0.00	0.19
17-Jun-12	78	67	89	79	73	86	0.00	0.2
18-Jun-12	79	66	91	80	74	87	0.00	0.2
19-Jun-12	80	68	91	81	75	88	0.00	0.2
20-Jun-12	79	68	90	81	75	87	0.00	0.19
21-Jun-12	80	67	91	81	76	87	0.00	0.18
22-Jun-12	83	72	95	83	77	89	0.00	0.19
23-Jun-12	80	74	92	82	79	86	0.13	0.14
24-Jun-12	74	71	77	75	72	78	0.28	0.05
25-Jun-12	75	72	78	72	72	73	0.44	0.05
26-Jun-12	81	73	91	75	70	82	0.00	0.19
27-Jun-12	77	64	91	77	71	84	0.00	0.2
28-Jun-12	80	64	95	79	72	87	0.00	0.2
29-Jun-12	83	69	96	81	75	89	0.00	0.21
30-Jun-12	84	73	97	83	77	90	0.00	0.2
<b>High</b>			<b>97</b>			<b>93</b>		
<b>Low</b>		<b>61</b>			<b>70</b>			
<b>Average</b>	<b>79</b>	69	90	<b>79</b>	74	85		
Days over 95 <sup>o</sup>				4	<b>Total for Month</b>		<b>7.35</b>	4.84
Days of 100 <sup>o</sup>				0	<b>Number of Rain Days</b>		12.00	
Days below 32 <sup>o</sup>				0	<b>59 year Average</b>		4.91	
					<b>Deviation from Average</b>		2.44	
					<b>Net Gain/loss (Rain - ET)</b>			<b>2.51</b>

<b>Year Cumulative</b>	
<b>Rain</b>	<b>ET</b>
29.2	21.2
55.0	
28.1	
1.1	
	7.9



## July Daily Weather Data

Temperature							Precipitation		
Date	Air Temp 2 ft			Soil Temp 4 inch			Rain	Evapo Trans	
	Avg	Min	Max	Avg	Min	Max	Inches	Inches	
1-Jul-12	85	74	97	85	79	91	0.03	0.21	
2-Jul-12	81	72	95	83	78	89	0.33	0.18	
3-Jul-12	79	69	96	81	78	89	1.84	0.15	
4-Jul-12	79	72	89	79	75	83	0.00	0.14	
5-Jul-12	83	73	96	81	76	88	0.00	0.21	
6-Jul-12	83	74	92	82	78	87	0.00	0.18	
7-Jul-12	83	74	94	83	78	89	0.00	0.2	
8-Jul-12	84	73	96	84	78	90	0.00	0.21	
9-Jul-12	81	74	95	84	80	92	0.00	0.19	
10-Jul-12	80	72	91	84	79	89	0.00	0.17	
11-Jul-12	80	71	90	83	79	88	0.00	N/A	
12-Jul-12	79	72	91	82	78	86	0.11	0.14	
13-Jul-12	82	73	93	82	77	88	0.00	0.18	
14-Jul-12	84	74	95	84	78	91	0.00	0.21	
15-Jul-12	84	74	97	85	79	92	0.00	0.21	
16-Jul-12	86	74	99	87	81	94	0.13	0.22	
17-Jul-12	78	72	95	83	78	89	0.30	0.13	
18-Jul-12	80	70	93	82	76	89	0.03	0.19	
19-Jul-12	80	73	91	82	77	89	0.06	0.17	
20-Jul-12	78	73	88	80	77	85	0.07	0.13	
21-Jul-12	82	73	94	81	75	88	0.00	0.19	
22-Jul-12	81	73	98	83	77	90	0.00	0.18	
23-Jul-12	84	71	97	85	78	93	0.00	0.2	
24-Jul-12	83	74	98	86	80	94	0.00	0.18	
25-Jul-12	83	75	97	84	81	89	0.00	0.15	
26-Jul-12	80	71	97	82	77	90	1.56	0.15	
27-Jul-12	81	73	93	80	76	86	0.05	0.17	
28-Jul-12	81	73	91	80	76	84	0.00	0.15	
29-Jul-12	83	74	96	82	77	88	0.00	0.18	
30-Jul-12	84	76	98	83	78	90	0.00	0.2	
31-Jul-12	77	74	82	79	77	82	0.54	0.09	
<b>High</b>			<b>99</b>			<b>94</b>			
<b>Low</b>		<b>69</b>			<b>75</b>				
<b>Average</b>	<b>82</b>	73	94	<b>83</b>	78	89			
Days over 95 <sup>o</sup> 17 Days of 100 <sup>o</sup> 0 Days below 32 <sup>o</sup> 0				<b>Total for Month</b>		<b>5.05</b>	5.26		
				<b>Number of Rain Days</b>		12.00			
				<b>59 year Average</b>		6.10			
				<b>Deviation from Average</b>		-1.05			
				<b>Net Gain/loss (Rain - ET)</b>			<b>-0.21</b>		

<b>Year Cumulative</b>	
<b>Rain</b>	<b>ET</b>
34.2	26.5
67.0	
34.2	
0.0	
	7.7

## August Daily Weather Data

Date	Temperature						Precipitation	
	Air Temp 2 ft			Soil Temp 4 inch			Rain	Evapo Trans
	Avg	Min	Max	Avg	Min	Max	Inches	Inches
1-Aug-12	84	74	96	81	76	87	0.00	0.19
2-Aug-12	82	75	96	82	79	89	0.00	0.17
3-Aug-12	81	73	92	82	77	87	0.00	0.17
4-Aug-12	82	73	94	83	78	89	0.00	0.19
5-Aug-12	79	73	90	81	78	85	0.30	0.12
6-Aug-12	76	74	80	76	73	79	4.60	0.06
7-Aug-12	76	74	81	75	74	76	0.64	0.06
8-Aug-12	80	73	94	77	73	83	0.00	0.15
9-Aug-12	77	74	87	76	75	78	0.85	0.09
10-Aug-12	75	71	80	74	73	76	0.41	0.08
11-Aug-12	78	71	88	75	72	79	0.17	0.13
12-Aug-12	79	69	91	77	73	83	0.00	0.18
13-Aug-12	80	66	93	78	72	84	0.00	0.18
14-Aug-12	78	70	88	76	74	78	2.47	0.11
15-Aug-12	82	74	93	78	74	84	0.00	0.18
16-Aug-12	82	76	93	80	76	84	0.00	0.15
17-Aug-12	77	72	92	78	76	84	1.91	0.14
18-Aug-12	80	70	91	78	74	84	0.00	0.17
19-Aug-12	78	74	87	78	76	81	0.03	0.11
20-Aug-12	73	71	76	75	73	77	0.77	0.06
21-Aug-12	76	70	87	76	72	80	0.00	0.13
22-Aug-12	77	69	90	77	73	83	0.36	0.16
23-Aug-12	77	70	90	77	73	83	0.00	0.15
24-Aug-12	78	68	90	78	73	83	0.00	0.16
25-Aug-12	78	69	90	78	74	83	0.00	0.16
26-Aug-12	78	66	90	78	73	83	0.00	0.17
27-Aug-12	78	71	86	76	74	79	0.02	0.1
28-Aug-12	82	75	92	78	74	83	0.01	0.16
29-Aug-12	79	74	88	78	76	81	1.36	0.11
30-Aug-12	78	75	85	76	75	78	0.45	0.08
31-Aug-12	81	74	93	78	75	84	0.00	0.15
<b>High</b>			<b>96</b>			<b>89</b>		
<b>Low</b>		<b>66</b>			<b>72</b>			
<b>Average</b>	<b>79</b>	<b>72</b>	<b>89</b>	<b>78</b>	<b>74</b>	<b>82</b>		
				<b>Total for Month</b>			<b>14.35</b>	4.22
Days over 95 <sup>o</sup>				2				
Days of 100 <sup>o</sup>				0				
Days below 32 <sup>o</sup>				0				
				<b>Number of Rain Days</b>			15.00	
				<b>59 year Average</b>			5.20	
				<b>Deviation from Average</b>			9.15	
				<b>Net Gain/loss (Rain - ET)</b>				<b>10.13</b>

<b>Year Cumulative</b>	
<b>Rain</b>	<b>ET</b>
48.6	30.7
82.0	
39.4	
9.1	
	17.9

# September Daily Weather Data

Temperature							Precipitation			
Date	Air Temp 2 ft			Soil Temp 4 inch			Rain	Evapo Trans		
	Avg	Min	Max	Avg	Min	Max	Inches	Inches		
1-Sep-12	81	72	94	80	75	85	0.00	0.17		
2-Sep-12	81	73	94	80	76	85	0.10	0.17		
3-Sep-12	80	72	90	79	76	82	0.25	0.13		
4-Sep-12	74	71	77	76	75	78	1.31	0.06		
5-Sep-12	76	72	84	76	73	78	0.13	0.1		
6-Sep-12	80	71	93	77	73	82	0.00	0.15		
7-Sep-12	81	72	94	79	75	84	0.00	0.18		
8-Sep-12	78	73	88	78	76	82	0.19	0.11		
9-Sep-12	75	64	85	77	74	81	0.00	0.15		
10-Sep-12	73	61	88	76	71	81	0.00	0.14		
11-Sep-12	74	62	87	76	71	81	0.00	0.14		
12-Sep-12	76	65	88	76	72	81	0.00	0.14		
13-Sep-12	77	70	88	77	73	81	0.00	0.14		
14-Sep-12	76	68	85	76	73	79	0.08	0.11		
15-Sep-12	78	70	91	77	73	81	0.00	0.14		
16-Sep-12	77	70	91	77	74	82	0.00	0.13		
17-Sep-12	74	69	84	75	73	77	2.19	0.08		
18-Sep-12	75	69	84	74	72	76	0.63	0.1		
19-Sep-12	72	64	82	73	70	77	0.00	0.12		
20-Sep-12	73	60	88	73	68	78	0.00	0.13		
21-Sep-12	74	66	87	74	71	78	0.00	0.12		
22-Sep-12	76	64	90	75	70	80	0.00	0.14		
23-Sep-12	74	64	88	74	71	79	0.00	0.14		
24-Sep-12	69	55	83	73	69	78	0.00	0.12		
25-Sep-12	70	51	87	72	67	78	0.00	0.12		
26-Sep-12	75	63	88	73	69	78	0.00	0.12		
27-Sep-12	77	68	91	75	71	80	0.00	0.13		
28-Sep-12	78	67	92	76	72	80	0.00	0.12		
29-Sep-12	75	67	90	75	72	79	0.16	0.1		
30-Sep-12	76	71	84	75	72	77	0.13	0.08		
<b>High</b>			<b>94</b>			<b>85</b>				
<b>Low</b>		<b>51</b>			<b>67</b>					
<b>Average</b>	<b>76</b>	<b>67</b>	<b>88</b>	<b>76</b>	<b>72</b>	<b>80</b>				
Days over 95 <sup>o</sup>				0			<b>Total for Month</b>		<b>5.17</b>	3.78
Days of 100 <sup>o</sup>				0			<b>Number of Rain Days</b>		10.00	
Days below 32 <sup>o</sup>				0			<b>59 year Average</b>		4.42	
							<b>Deviation from Average</b>		0.75	
							<b>Net Gain/loss (Rain - ET)</b>			<b>1.39</b>

<b>Year Cumulative</b>	
<b>Rain</b>	<b>ET</b>
53.7	34.5
92.0	
43.8	
9.9	
	19.3

# October Daily Weather Data

Date	Temperature						Precipitation					
	Air Temp 2 ft			Soil Temp 4 inch			Rain	Evapo Trans				
	Avg	Min	Max	Avg	Min	Max	Inches	Inches				
1-Oct-12	75	70	80	73	72	74	1.20	0.06				
2-Oct-12	71	64	80	72	69	74	0.00	0.09				
3-Oct-12	70	64	79	71	68	73	0.00	0.08				
4-Oct-12	71	65	80	70	68	73	0.00	0.07				
5-Oct-12	74	69	82	71	69	74	0.00	0.08				
6-Oct-12	75	66	89	72	69	77	0.00	0.11				
7-Oct-12	72	63	83	72	69	76	0.00	0.11				
8-Oct-12	68	59	81	70	68	74	0.00	0.1				
9-Oct-12	63	58	74	68	66	71	0.00	0.07				
10-Oct-12	67	57	83	68	64	73	0.00	0.1				
11-Oct-12	68	55	85	68	64	73	0.00	0.1				
12-Oct-12	71	56	87	69	65	74	0.00	0.1				
13-Oct-12	72	62	84	70	66	74	0.00	0.1				
14-Oct-12	72	62	87	70	67	74	0.00	0.1				
15-Oct-12	71	57	86	70	67	74	0.00	0.1				
16-Oct-12	63	49	77	67	64	71	0.00	0.08				
17-Oct-12	68	57	82	68	64	72	0.00	0.09				
18-Oct-12	66	60	74	66	65	68	0.55	0.06				
19-Oct-12	65	52	78	65	62	70	0.00	0.09				
20-Oct-12	61	47	77	63	59	67	0.00	0.08				
21-Oct-12	62	47	79	63	58	68	0.00	0.08				
22-Oct-12	64	51	83	63	59	68	0.00	0.09				
23-Oct-12	66	50	83	64	59	69	0.00	0.08				
24-Oct-12	68	56	85	65	61	70	0.00	0.09				
25-Oct-12	71	59	87	66	62	70	0.00	0.09				
26-Oct-12	72	60	85	67	63	71	0.00	0.1				
27-Oct-12	64	56	74	65	63	68	0.00	0.08				
28-Oct-12	55	47	62	61	58	63	0.00	0.05				
29-Oct-12	52	43	63	58	55	61	0.00	0.07				
30-Oct-12	50	37	65	56	53	60	0.00	0.07				
31-Oct-12	58	42	74	57	53	62	0.00	0.07				
<b>High</b>			<b>89</b>			<b>77</b>						
<b>Low</b>		<b>37</b>			<b>53</b>							
<b>Average</b>	<b>67</b>	<b>56</b>	<b>80</b>	<b>67</b>	<b>64</b>	<b>70</b>						
Days over 95 <sup>o</sup>	0			<b>Total for Month</b>			<b>1.75</b>	2.64	55.5	37.1		
				<b>Number of Rain Days</b>			2.00				94.0	
Days below 32 <sup>o</sup>	0			<b>59 year Average</b>			2.80			46.6		
				<b>Deviation from Average</b>			-1.05			8.8		
				<b>Net Gain/loss (Rain - ET)</b>						<b>-0.89</b>		

<b>Year Cumulative</b>	
<b>Rain</b>	<b>ET</b>
55.5	37.1
94.0	
46.6	
8.8	
	18.4

# November Daily Weather Data

Date	Temperature						Precipitation	
	Air Temp 2 ft			Soil Temp 4 inch			Rain	Evapo Trans
	Avg	Min	Max	Avg	Min	Max	Inches	Inches
1-Nov-12	60	45	74	59	56	64	0.00	0.07
2-Nov-12	62	41	81	59	55	64	0.00	0.08
3-Nov-12	69	55	86	62	58	67	0.00	0.08
4-Nov-12	68	56	82	63	60	67	0.00	0.08
5-Nov-12	62	48	76	62	59	66	0.00	0.07
6-Nov-12	56	51	62	60	57	62	0.32	0.05
7-Nov-12	54	45	65	57	55	60	0.00	0.06
8-Nov-12	50	38	67	56	52	60	0.00	0.06
9-Nov-12	52	36	73	55	51	60	0.00	0.06
10-Nov-12	54	37	76	55	51	60	0.00	0.06
11-Nov-12	60	42	79	57	52	62	0.00	0.07
12-Nov-12	66	53	78	59	55	62	0.00	0.07
13-Nov-12	55	45	68	58	55	61	0.00	0.06
14-Nov-12	56	48	61	56	55	58	0.00	0.05
15-Nov-12	52	49	55	56	54	56	0.00	0.04
16-Nov-12	51	40	64	55	53	57	0.00	0.05
17-Nov-12	52	37	66	54	50	58	0.00	0.05
18-Nov-12	57	46	73	55	52	59	0.00	0.06
19-Nov-12	57	43	71	55	51	59	0.00	0.06
20-Nov-12	61	53	70	57	55	60	0.00	0.05
21-Nov-12	58	45	74	56	53	60	0.00	0.06
22-Nov-12	56	40	75	56	52	60	0.00	0.05
23-Nov-12	57	40	75	55	52	59	0.00	0.06
24-Nov-12	52	34	63	55	52	58	0.00	0.05
25-Nov-12	44	28	66	52	48	56	0.00	0.04
26-Nov-12	50	29	67	51	47	55	0.00	0.05
27-Nov-12	55	51	59	53	52	54	0.97	0.04
28-Nov-12	52	39	60	53	50	54	0.01	0.04
29-Nov-12	51	36	67	51	47	54	0.00	0.05
30-Nov-12	59	50	76	53	50	58	0.00	0.06
<b>High</b>			<b>86</b>			<b>67</b>		
<b>Low</b>		<b>28</b>			<b>47</b>			
<b>Average</b>	<b>56</b>	<b>43</b>	<b>70</b>	<b>56</b>	<b>53</b>	<b>60</b>		
Days over 95 <sup>o</sup>	0			<b>Total for Month</b>			<b>1.30</b>	1.73
				<b>Number of Rain Days</b>			3.00	
Days below 32 <sup>o</sup>	2			<b>59 year Average</b>			3.33	
				<b>Deviation from Average</b>			-2.03	
				<b>Net Gain/loss (Rain - ET)</b>				<b>-0.43</b>

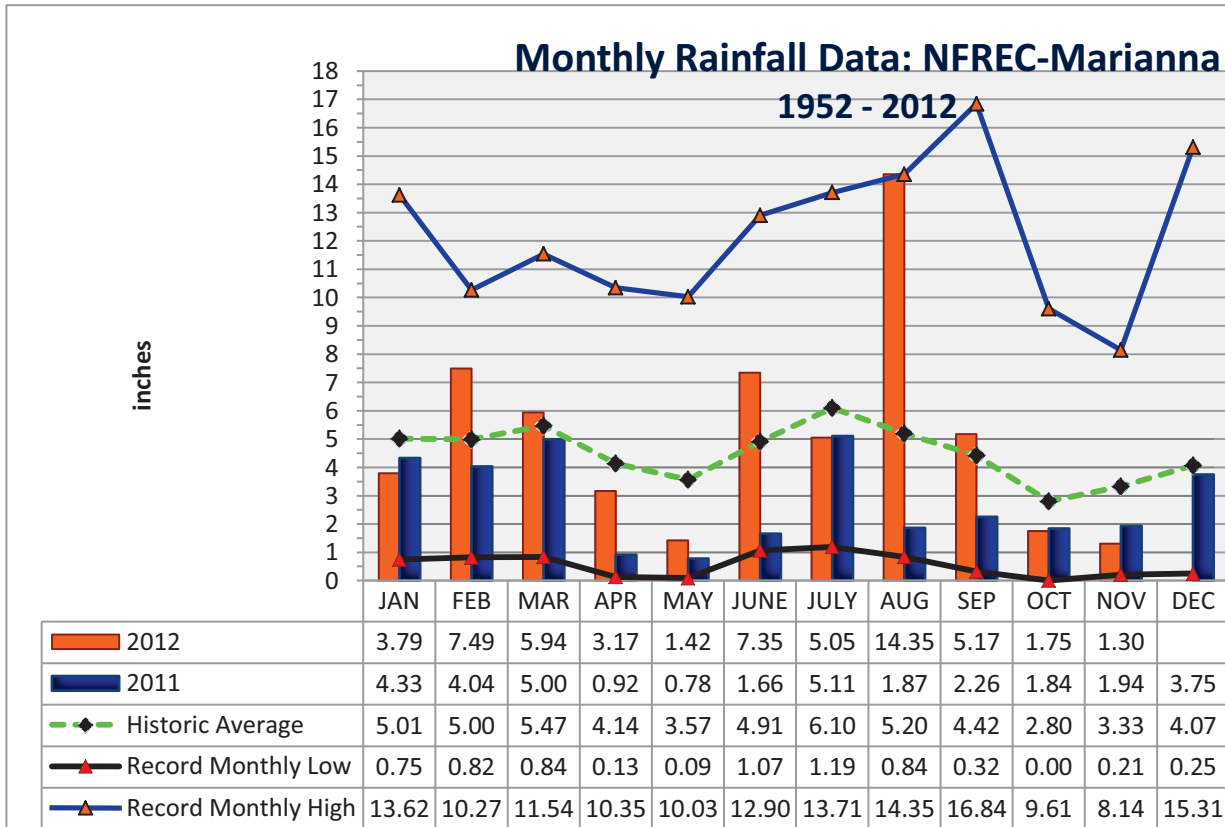
<b>Year Cumulative</b>	
<b>Rain</b>	<b>ET</b>
56.8	38.9
97.0	
50.0	
6.8	
	17.9

**Jackson County**  
**Monthly Total Rainfall, 1952 - 2012**  
No FL Research & Education Cntr, Marianna, FL



YEAR	JAN	FEB	MAR	APR	MAY	JUNE	JULY	AUG	SEP	OCT	NOV	DEC	TOTAL
1952	1.14	8.88	4.48	2.11	5.13	1.12	5.95	8.81	3.09	0.65	3.26	3.42	48.04
1953	4.84	7.26	3.03	8.43	2.43	3.97	6.84	1.63	6.33	0.65	4.09	<u>15.31</u>	64.81
1954	1.33	3.49	2.62	2.58	1.96	3.46	3.28	2.84	1.72	1.30	2.66	1.44	<b>28.68</b>
1955	3.66	1.83	<b>0.84</b>	5.80	3.03	1.62	6.75	3.75	2.44	2.10	0.72	0.77	33.31
1956	3.59	5.18	3.77	2.04	4.03	5.45	8.52	4.09	6.44	5.08	0.28	3.34	51.81
1957	<b>0.75</b>	2.65	5.17	5.74	4.60	5.75	9.83	5.91	<u>16.84</u>	1.31	6.24	2.22	67.01
1958	4.48	3.61	4.73	7.22	5.57	6.00	8.39	3.45	3.68	1.88	1.75	2.32	53.08
1959	3.67	7.06	8.50	5.73	6.95	3.77	4.83	3.67	3.07	7.93	<b>0.21</b>	1.53	56.92
1960	3.36	7.08	3.41	6.80	3.20	4.75	4.97	4.80	6.22	2.00	0.47	2.35	49.41
1961	4.23	4.15	3.64	5.57	3.97	4.41	3.99	11.09	2.60	<b>0.00</b>	2.84	6.23	52.72
1962	1.72	2.80	8.13	3.28	2.86	3.67	7.97	6.07	3.07	2.82	5.16	1.67	49.22
1963	7.31	3.02	3.18	1.36	3.50	7.99	5.16	1.50	5.25	0.01	4.22	6.05	48.55
1964	10.80	6.81	6.41	9.47	2.23	5.68	9.22	3.07	7.47	<u>9.61</u>	3.35	6.44	<u>80.56</u>
1965	2.63	6.09	5.51	3.96	0.18	9.60	3.26	4.18	4.48	3.41	1.81	3.60	48.71
1966	5.56	9.84	2.57	0.77	5.80	3.13	3.25	9.82	5.09	1.41	2.03	4.62	53.89
1967	8.27	3.32	2.19	<b>0.13</b>	2.61	7.02	6.49	3.58	1.40	1.86	2.40	7.98	47.25
1968	1.28	2.30	3.40	2.50	3.39	1.18	5.45	4.61	2.99	1.41	5.11	5.34	38.96
1969	1.68	3.49	7.08	4.54	3.01	1.71	13.18	3.05	5.64	1.50	1.22	3.80	49.90
1970	4.16	9.20	8.86	1.83	1.81	3.69	5.04	8.01	0.49	4.40	2.21	3.13	52.83
1971	1.97	6.11	7.15	3.17	3.03	3.85	5.20	6.76	2.47	1.84	1.94	3.70	47.19
1972	3.62	6.03	6.41	0.38	2.87	8.89	3.78	5.39	2.14	2.44	3.29	3.77	49.01
1973	8.14	7.71	8.38	7.60	6.87	3.63	11.12	4.51	5.40	0.27	3.64	5.33	72.60
1974	5.24	5.80	2.66	3.40	3.78	1.56	3.29	8.01	4.68	0.84	2.14	2.89	44.29
1975	10.21	6.36	4.91	<u>10.35</u>	3.97	4.10	<u>13.71</u>	5.40	3.81	4.35	2.89	3.28	73.34
1976	6.99	1.50	4.89	1.87	8.89	3.08	3.03	3.47	5.47	6.18	5.72	3.97	55.06
1977	3.47	1.81	6.52	0.88	0.60	6.36	3.55	5.22	9.83	2.59	<u>8.14</u>	4.19	53.16
1978	7.28	3.28	7.25	4.65	6.73	3.79	7.25	4.90	0.98	0.20	6.01	3.65	55.97
1979	7.30	7.78	3.26	7.75	6.22	1.31	7.49	6.30	11.51	0.53	4.47	2.84	66.76
1980	6.58	2.96	<u>11.54</u>	9.29	4.50	3.50	5.87	2.53	4.56	4.71	1.52	<b>0.25</b>	57.81
1981	1.70	5.32	5.94	3.03	2.73	4.74	4.02	2.53	2.44	1.75	0.85	4.94	39.99
1982	4.17	5.61	2.91	5.93	5.39	3.00	7.51	4.42	6.00	2.65	2.34	9.14	59.07
1983	4.92	6.84	8.53	7.88	2.27	5.66	<b>1.19</b>	2.53	8.97	3.52	5.90	7.65	65.86
1984	5.49	5.01	8.62	6.29	2.50	5.31	12.01	5.76	<b>0.32</b>	1.60	1.63	0.80	55.34
1985	4.60	4.46	2.60	1.18	4.44	5.68	3.68	5.58	1.42	7.42	7.91	5.34	54.31
1986	5.68	<u>10.27</u>	3.21	0.83	2.26	1.85	2.75	4.12	2.35	2.22	4.40	5.68	45.62
1987	8.62	5.52	7.23	0.40	4.46	5.43	5.51	4.18	2.27	0.06	4.02	0.81	48.51
1988	5.57	6.40	8.41	2.69	0.28	<b>1.07</b>	5.43	3.98	5.53	1.98	3.28	1.23	45.85
1989	1.59	2.74	4.96	3.63	7.01	<u>12.90</u>	11.19	3.06	3.36	7.20	4.71	5.45	67.80
1990	5.26	4.57	4.55	3.00	3.22	4.02	3.65	2.91	0.85	1.34	0.93	3.42	37.72
1991	<u>13.62</u>	3.44	9.00	5.32	<u>10.03</u>	5.30	10.67	3.89	1.53	1.17	1.60	3.00	68.57
1992	8.37	6.29	7.92	2.50	1.41	11.16	8.69	6.72	3.19	2.08	7.40	2.93	68.66
1993	12.00	3.38	7.41	1.50	1.60	4.18	6.68	3.89	3.44	2.90	2.27	3.63	52.88
1994	8.64	2.53	6.25	4.34	1.82	11.41	10.95	9.08	6.44	7.62	2.53	3.79	75.40
1995	5.23	3.13	4.29	4.35	3.90	5.56	3.02	6.16	0.86	7.51	4.12	1.78	49.91

YEAR	JAN	FEB	MAR	APR	MAY	JUNE	JULY	AUG	SEP	OCT	NOV	DEC	TOTAL
1996	3.64	5.99	8.47	5.76	1.50	5.43	2.83	14.28	5.32	3.81	2.01	3.65	62.69
1997	6.68	5.29	2.63	10.08	5.91	6.41	5.73	4.65	3.78	2.10	6.85	8.44	68.55
1998	6.28	8.30	6.11	2.24	1.45	2.35	4.37	2.20	16.31	0.30	2.05	1.98	53.94
1999	6.95	2.90	3.61	1.50	6.71	8.99	8.64	4.02	4.33	3.13	3.56	2.50	56.84
2000	3.78	4.96	4.48	4.05	0.09	4.00	3.40	7.15	7.20	0.71	4.43	3.21	47.46
2001	2.16	0.82	10.00	1.99	2.52	8.24	4.66	8.21	1.90	1.51	1.70	0.78	44.49
2002	3.82	2.44	5.51	5.78	2.19	3.45	10.34	3.30	11.83	7.36	7.76	5.99	69.77
2003	2.30	7.03	8.18	4.89	3.11	6.11	7.84	5.99	2.39	3.58	3.04	3.12	57.58
2004	3.19	7.66	0.90	4.37	1.19	6.66	4.92	1.67	10.01	3.89	4.97	3.25	52.68
2005	3.33	2.31	9.05	7.04	1.67	7.47	9.44	11.71	1.62	0.03	3.15	4.81	61.63
2006	4.82	3.90	0.91	1.61	4.97	1.99	2.22	5.18	0.91	3.09	3.41	5.43	38.44
2007	5.99	2.45	1.10	0.99	1.57	3.97	3.94	4.18	1.27	4.79	1.89	4.03	36.17
2008	4.26	9.00	9.11	4.28	1.46	8.64	4.02	9.29	0.74	5.11	3.18	8.23	67.32
2009	2.33	3.26	7.11	7.73	9.17	2.78	3.88	3.19	5.22	3.39	2.35	9.57	59.98
2010	7.53	3.99	3.41	4.01	5.09	2.92	2.31	0.84	1.33	0.22	5.82	0.63	38.10
2011	4.33	4.04	5.00	0.92	0.78	1.66	5.11	1.87	2.26	1.84	1.94	3.75	33.50
<b>2012</b>	<b>3.79</b>	<b>7.49</b>	<b>5.94</b>	<b>3.17</b>	<b>1.42</b>	<b>7.35</b>	<b>5.05</b>	<b>14.35</b>	<b>5.17</b>	<b>1.75</b>	<b>1.30</b>		<b>56.78</b>
<b>Deviation from the Average Monthly Rainfall</b>													
Inches	-1.22	2.49	0.47	-0.97	-2.15	2.44	-1.05	9.15	0.75	-1.05	-2.03		2.86
<b>Monthly Average Rainfall, 1952-2012</b>													
AVG.	5.01	5.00	5.47	4.14	3.57	4.91	6.10	5.20	4.42	2.80	3.33	4.07	53.92
<b>% of Annual Rainfall Occuring each Month</b>													
	9.3%	9.3%	10.1%	7.7%	6.6%	9.1%	11.3%	9.6%	8.2%	5.2%	6.2%	7.5%	
<b>Record High/Low for the Month</b>													
<b>LOW</b>	0.75	0.82	0.84	0.13	0.09	1.07	1.19	0.84	0.32	0.00	0.21	0.25	28.68
<b>HIGH</b>	13.62	10.27	11.54	10.35	10.03	12.90	13.71	14.35	16.84	9.61	8.14	15.31	80.56



**Jackson County**  
**Monthly Cumulative Rainfall, 1952 -2012**  
North Florida Research & Education Center Marianna, FL



YEAR	JAN	FEB	MAR	APR	MAY	JUNE	JULY	AUG	SEP	OCT	NOV	DEC
1952	1.14	10.02	14.50	16.61	21.74	22.86	28.81	37.62	40.71	41.36	44.62	48.04
1953	4.84	12.10	15.13	23.56	25.99	29.96	36.80	38.43	44.76	45.41	49.50	64.81
1954	1.33	4.82	7.44	10.02	<b>11.98</b>	15.44	<b>18.72</b>	<b>21.56</b>	<b>23.28</b>	<b>24.58</b>	<b>27.24</b>	<b>28.68</b>
1955	3.66	5.49	<b>6.33</b>	12.13	15.16	16.78	23.53	27.28	29.72	31.82	32.54	33.31
1956	3.59	8.77	12.54	14.58	18.61	24.06	32.58	36.67	43.11	48.19	48.47	51.81
1957	<b>0.75</b>	3.40	8.57	14.31	18.91	24.66	34.49	40.40	57.24	58.55	64.79	67.01
1958	4.48	8.09	12.82	20.04	25.61	31.61	40.00	43.45	47.13	49.01	50.76	53.08
1959	3.67	10.73	19.23	24.96	31.91	35.68	40.51	44.18	47.25	55.18	55.39	56.92
1960	3.36	10.44	13.85	20.65	23.85	28.60	33.57	38.37	44.59	46.59	47.06	49.41
1961	4.23	8.38	12.02	17.59	21.56	25.97	29.96	41.05	43.65	43.65	46.49	52.72
1962	1.72	4.52	12.65	15.93	18.79	22.46	30.43	36.50	39.57	42.39	47.55	49.22
1963	7.31	10.33	13.51	14.87	18.37	26.36	31.52	33.02	38.27	38.28	42.50	48.55
1964	10.80	<u>17.61</u>	24.02	<u>33.49</u>	35.72	41.40	50.62	53.69	61.16	<u>70.77</u>	<u>74.12</u>	<u>80.56</u>
1965	2.63	8.72	14.23	18.19	18.37	27.97	31.23	35.41	39.89	43.30	45.11	48.71
1966	5.56	15.40	17.97	18.74	24.54	27.67	30.92	40.74	45.83	47.24	49.27	53.89
1967	8.27	11.59	13.78	13.91	16.52	23.54	30.03	33.61	35.01	36.87	39.27	47.25
1968	1.28	3.58	6.98	<b>9.48</b>	12.87	<b>14.05</b>	19.50	24.11	27.10	28.51	33.62	38.96
1969	1.68	5.17	12.25	16.79	19.80	21.51	34.69	37.74	43.38	44.88	46.10	49.90
1970	4.16	13.36	22.22	24.05	25.86	29.55	34.59	42.60	43.09	47.49	49.70	52.83
1971	1.97	8.08	15.23	18.40	21.43	25.28	30.48	37.24	39.71	41.55	43.49	47.19
1972	3.62	9.65	16.06	16.44	19.31	28.20	31.98	37.37	39.51	41.95	45.24	49.01
1973	8.14	15.85	24.23	31.83	38.70	42.33	53.45	57.96	<u>63.36</u>	63.63	67.27	72.60
1974	5.24	11.04	13.70	17.10	20.88	22.44	25.73	33.74	38.42	39.26	41.40	44.29
1975	10.21	16.57	21.48	31.83	35.80	39.90	53.61	59.01	62.82	67.17	70.06	73.34
1976	6.99	8.49	13.38	15.25	24.14	27.22	30.25	33.72	39.19	45.37	51.09	55.06
1977	3.47	5.28	11.80	12.68	13.28	19.64	23.19	28.41	38.24	40.83	48.97	53.16
1978	7.28	10.56	17.81	22.46	29.19	32.98	40.23	45.13	46.11	46.31	52.32	55.97
1979	7.30	15.08	18.34	26.09	32.31	33.62	41.11	47.41	58.92	59.45	63.92	66.76
1980	6.58	9.54	21.08	30.37	34.87	38.37	44.24	46.77	51.33	56.04	57.56	57.81
1981	1.70	7.02	12.96	15.99	18.72	23.46	27.48	30.01	32.45	34.20	35.05	39.99
1982	4.17	9.78	12.69	18.62	24.01	27.01	34.52	38.94	44.94	47.59	49.93	59.07
1983	4.92	11.76	20.29	28.17	30.44	36.10	37.29	39.82	48.79	52.31	58.21	65.86
1984	5.49	10.50	19.12	25.41	27.91	33.22	45.23	50.99	51.31	52.91	54.54	55.34
1985	4.60	9.06	11.66	12.84	17.28	22.96	26.64	32.22	33.64	41.06	48.97	54.31
1986	5.68	15.95	19.16	19.99	22.25	24.10	26.85	30.97	33.32	35.54	39.94	45.62
1987	8.62	14.14	21.37	21.77	26.23	31.66	37.17	41.35	43.62	43.68	47.70	48.51
1988	5.57	11.97	20.38	23.07	23.35	24.42	29.85	33.83	39.36	41.34	44.62	45.85
1989	1.59	4.33	9.29	12.92	19.93	32.83	44.02	47.08	50.44	57.64	62.35	67.80
1990	5.26	9.83	14.38	17.38	20.60	24.62	28.27	31.18	32.03	33.37	34.30	37.72
1991	<u>13.62</u>	17.06	<u>26.06</u>	31.38	<u>41.41</u>	<u>46.71</u>	<u>57.38</u>	<u>61.27</u>	62.80	63.97	65.57	68.57
1992	8.37	14.66	22.58	25.08	26.49	37.65	46.34	53.06	56.25	58.33	65.73	68.66
1993	12.00	15.38	22.79	24.29	25.89	30.07	36.75	40.64	44.08	46.98	49.25	52.88
1994	8.64	11.17	17.42	21.76	23.58	34.99	45.94	55.02	61.46	69.08	71.61	75.40
1995	5.23	8.36	12.65	17.00	20.90	26.46	29.48	35.64	36.50	44.01	48.13	49.91



YEAR	JAN	FEB	MAR	APR	MAY	JUNE	JULY	AUG	SEP	OCT	NOV	DEC
1996	3.64	9.63	18.10	23.86	25.36	30.79	33.62	47.90	53.22	57.03	59.04	62.69
1997	6.68	11.97	14.60	24.68	30.59	37.00	42.73	47.38	51.16	53.26	60.11	68.55
1998	6.28	14.58	20.69	22.93	24.38	26.73	31.10	33.30	49.61	49.91	51.96	53.94
1999	6.95	9.85	13.46	14.96	21.67	30.66	39.30	43.32	47.65	50.78	54.34	56.84
2000	3.78	8.74	13.22	17.27	17.36	21.36	24.76	31.91	39.11	39.82	44.25	47.46
2001	2.16	<b>2.98</b>	12.98	14.97	17.49	25.73	30.39	38.60	40.50	42.01	43.71	44.49
2002	3.82	6.26	11.77	17.55	19.74	23.19	33.53	36.83	48.66	56.02	63.78	69.77
2003	2.30	9.33	17.51	22.40	25.51	31.62	39.46	45.45	47.84	51.42	54.46	57.58
2004	3.19	10.85	11.75	16.12	17.31	23.97	28.89	30.56	40.57	44.46	49.43	52.68
2005	3.33	5.64	14.69	21.73	23.40	30.87	40.31	52.02	53.64	53.67	56.82	61.63
2006	4.82	8.72	9.63	11.24	16.21	18.20	20.42	25.60	26.51	29.60	33.01	38.44
2007	5.99	8.44	9.54	10.53	12.10	16.07	20.01	24.19	25.46	30.25	32.14	36.17
2008	4.26	13.26	22.37	26.65	28.11	36.75	40.77	50.06	50.80	55.91	59.09	67.32
2009	2.33	5.59	12.70	20.43	29.60	32.38	36.26	39.45	44.67	48.06	50.41	59.98
2010	7.53	11.52	14.93	18.94	24.03	26.95	29.26	30.10	31.43	31.65	37.47	38.10
2011	4.33	8.37	13.37	14.29	15.07	16.73	21.84	23.71	25.97	27.81	29.75	33.50
<b>2012</b>	<b>3.79</b>	<b>11.28</b>	<b>17.22</b>	<b>20.39</b>	<b>21.81</b>	<b>29.16</b>	<b>34.21</b>	<b>48.56</b>	<b>53.73</b>	<b>55.48</b>	<b>56.78</b>	

**2012 Deviation from the Average Accumulation**

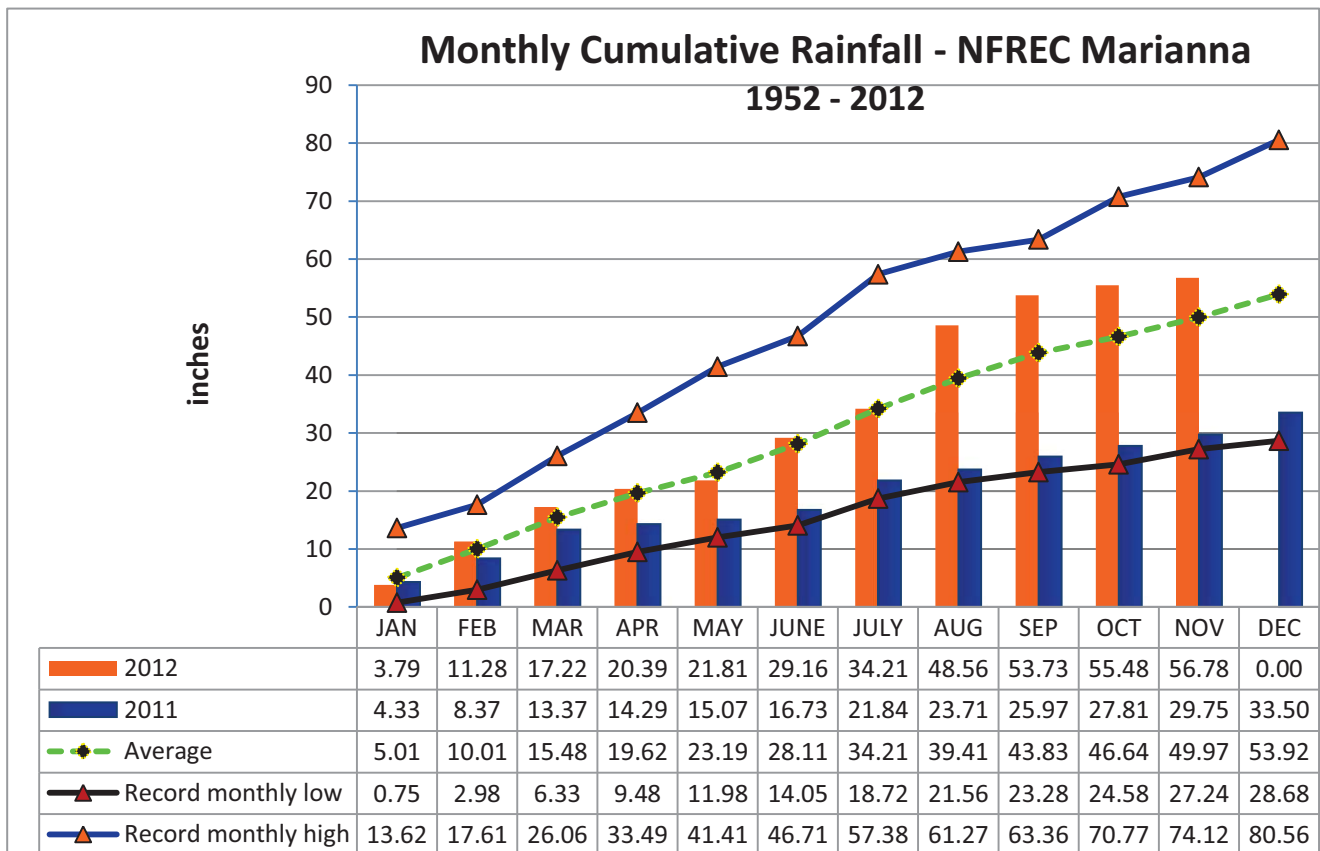
Inches	-1.22	1.27	1.74	0.77	-1.38	1.05	0.00	9.15	9.90	8.84	6.81	
--------	-------	------	------	------	-------	------	------	------	------	------	------	--

**Average Accumulation, 1952-2011**

Inches	5.01	10.01	15.48	19.62	23.19	28.11	34.21	39.41	43.83	46.64	49.97	53.92
--------	------	-------	-------	-------	-------	-------	-------	-------	-------	-------	-------	-------

**Record High/Low Accumulation**

<b>LOW</b>	0.75	2.98	6.33	9.48	11.98	14.05	18.72	21.56	23.28	24.58	27.24	28.68
<b>HIGH</b>	13.62	17.61	26.06	33.49	41.41	46.71	57.38	61.27	63.36	70.77	74.12	80.56



## 2012 Panhandle Rainfall Summary

<b>FAWN</b>	<b>Jan</b>	<b>Feb</b>	<b>Mar</b>	<b>Apr</b>	<b>May</b>	<b>June</b>	<b>July</b>	<b>Aug</b>	<b>Sept</b>	<b>Oct</b>	<b>Nov</b>	<b>Total</b>
Live Oak	2.3	1.3	4.7	1.1	6.2	26.1	3.3	5.6	5.1	2.2	0.2	58.0
Monticello	2.0	5.7	3.3	1.6	2.2	12.1	4.2	10.0	6.2	1.2	0.4	48.9
Quincy	3.0	3.3	3.2	2.2	4.7	5.9	2.7	7.3	4.5	1.0	0.5	38.2
Carrabelle	2.5	4.0	3.8	1.1	0.9	19.5	7.5	7.8	5.8	1.8	0.2	54.9
Marianna	3.8	7.5	5.9	3.2	1.4	7.4	5.1	14.4	5.2	1.8	1.3	56.8
Jay	2.2	5.6	2.0	2.5	4.7	10.6	8.1	8.1	4.9	0.9	1.4	51.1
Average	2.6	4.6	3.8	1.9	3.4	13.6	5.1	8.9	5.3	1.5	0.7	51.3