



Jackson County 2013 Weather Data

61 Years of Weather Data Recorded at the UF/IFAS Marianna North Florida Research and Education Center



Doug Mayo
Jackson County Extension Director

1952-2008 Rainfall Data compiled by
Ed Jowers, Emeritus County Extension Director

Data provided by Florida Automated Weather Station (FAWN)
 UF/IFAS North Florida Research and Education Center
 Greenwood, Florida



<http://fawn.ifas.ufl.edu/station.php?id=130>

Tower Name	Tower Number	Latitude Degree, Minutes	Latitude Degrees Minutes, Seconds	Latitude Degrees Decimal	Longitude Degree, Minutes	Longitude Degrees Minutes, Seconds	Longitude Degrees Decimal	Elevation Feet
Marianna	130.00	N 30°51.000'	N 30°50'00.00"	N 30.85000°	-85°09.910'	-85°09'54.60"	-85.16516°	115'

2013 Marianna FAWN Weather Summary

Month	Air Temp			Soil Temp			Rainfall Inches	Dev from 61 yr Avg
	High	Low	Avg	High	Low	Avg		
January	82	31	58	64	44	53	1.05	-3.90
February	77	27	55	61	42	52	12.86	7.74
March	83	29	55	66	42	53	2.99	-2.44
1st Qtr	83	27	56	66	42	53	16.90	3.84

Data: UF/IFAS Florida Automated Weather Network Marianna Station

Total days in 2013 $<32^{\circ}$ and $>95^{\circ}$ 7 0

January Daily Weather Data

Temperature							Precipitation		
Date	Air Temp 2 ft			Soil Temp 4 inch			Rain	Evapo Trans	
	Avg	Min	Max	Avg	Min	Max	Inches	Inches	
1-Jan-13	63	49	76	49	45	53	0.00	0.06	
2-Jan-13	60	53	69	53	52	54	0.00	0.05	
3-Jan-13	47	39	53	50	47	52	0.34	0.04	
4-Jan-13	44	36	56	46	44	49	0.00	0.04	
5-Jan-13	47	37	58	46	44	48	0.06	0.04	
6-Jan-13	50	45	56	47	46	49	0.00	0.04	
7-Jan-13	49	40	62	47	44	50	0.01	0.04	
8-Jan-13	57	45	72	49	46	53	0.00	0.05	
9-Jan-13	64	60	70	53	50	55	0.00	0.05	
10-Jan-13	69	63	80	56	54	60	0.00	0.06	
11-Jan-13	68	61	80	57	55	60	0.00	0.06	
12-Jan-13	68	58	79	58	55	61	0.00	0.06	
13-Jan-13	70	64	80	59	57	62	0.00	0.07	
14-Jan-13	71	63	80	61	59	63	0.00	N/A	
15-Jan-13	69	64	78	60	59	62	0.00	0.06	
16-Jan-13	71	65	80	62	60	64	0.06	0.07	
17-Jan-13	49	42	65	57	51	61	0.03	0.06	
18-Jan-13	47	37	61	51	48	55	0.00	0.04	
19-Jan-13	49	36	65	51	47	55	0.00	0.05	
20-Jan-13	54	42	69	52	49	56	0.00	0.05	
21-Jan-13	52	37	68	51	48	55	0.00	0.05	
22-Jan-13	46	35	59	50	47	53	0.00	0.05	
23-Jan-13	47	31	65	49	45	53	0.00	0.05	
24-Jan-13	57	42	73	50	47	54	0.00	0.06	
25-Jan-13	59	47	73	52	49	56	0.00	0.07	
26-Jan-13	61	49	76	54	51	58	0.00	0.07	
27-Jan-13	60	45	75	55	51	58	0.00	0.07	
28-Jan-13	65	55	79	57	54	60	0.00	0.08	
29-Jan-13	70	59	82	59	56	62	0.00	0.08	
30-Jan-13	68	51	79	60	56	62	0.54	0.08	
31-Jan-13	46	37	58	52	50	56	0.01	0.06	
High			82			64			
Low		31			44				
Average	58	48	70	53	50	56			
Days over 95 ^o	0			Total for Month		1.05	1.71	1.1	1.7
				Number of Rain Days		7.00		7.0	
Days below 32 ^o	1			Historic Average		4.95		5.0	
				Deviation from Average		-3.90		-3.9	
				Net Gain/loss (Rain - ET)			-0.66		-0.7

Year Cumulative
Rain **ET**
1.1 1.7
7.0
5.0
-3.9
-0.7

February Daily Weather Data

Temperature							Precipitation				
Date	Air Temp 2 ft			Soil Temp 4 inch			Rain	Evapo Trans			
	Avg	Min	Max	Avg	Min	Max	Inches	Inches			
1-Feb-13	46	34	61	49	47	53	0.00	0.06			
2-Feb-13	47	30	66	48	44	53	0.00	0.06			
3-Feb-13	52	41	66	50	47	54	0.00	0.07			
4-Feb-13	51	37	65	49	46	53	0.00	0.06			
5-Feb-13	57	46	68	52	49	54	0.11	0.06			
6-Feb-13	62	54	75	55	52	59	0.00	0.07			
7-Feb-13	59	53	66	54	53	55	2.06	0.05			
8-Feb-13	59	53	70	55	53	59	0.12	0.06			
9-Feb-13	53	41	67	54	50	58	0.00	0.07			
10-Feb-13	62	47	74	54	50	57	0.00	0.08			
11-Feb-13	66	59	77	57	56	59	0.17	0.07			
12-Feb-13	63	59	72	57	56	58	0.19	0.06			
13-Feb-13	62	49	71	58	54	59	0.08	0.07			
14-Feb-13	46	37	54	52	49	54	0.00	0.05			
15-Feb-13	49	34	67	51	46	56	0.00	0.07			
16-Feb-13	46	36	54	49	46	52	0.02	0.06			
17-Feb-13	40	27	56	47	42	52	0.00	0.06			
18-Feb-13	46	30	63	47	43	52	0.00	0.07			
19-Feb-13	55	42	67	49	46	52	0.16	0.07			
20-Feb-13	47	32	60	48	44	53	0.00	0.07			
21-Feb-13	54	34	73	49	44	54	0.00	0.08			
22-Feb-13	65	63	67	54	51	55	2.28	0.04			
23-Feb-13	65	56	71	57	55	58	1.75	0.06			
24-Feb-13	61	51	72	57	53	61	0.18	0.08			
25-Feb-13	58	53	62	54	53	57	4.58	0.05			
26-Feb-13	61	51	68	56	54	59	1.16	0.09			
27-Feb-13	53	45	63	53	51	56	0.00	0.07			
28-Feb-13	52	43	61	52	49	56	0.00	0.08			
High			77			61					
Low		27			42						
Average	55	44	66	52	49	56					
Days over 95 ^o	0			Total for Month			12.86	1.84	13.9	3.6	
				Number of Rain Days			13.00			20.0	
Days below 32 ^o	3			59 year Average			5.12				
				Deviation from Average			7.74			3.8	
				Net Gain/loss (Rain - ET)						11.02	

Year Cumulative	
Rain	
ET	
13.9	3.6
20.0	
10.1	
3.8	
	10.4

March Daily Weather Data

Temperature							Precipitation			
Date	Air Temp 2 ft			Soil Temp 4 inch			Rain	Evapo Trans		
	Avg	Min	Max	Avg	Min	Max	Inches	Inches		
1-Mar-13	46	38	54	50	47	53	0.00	0.06		
2-Mar-13	41	33	49	47	44	49	0.00	0.06		
3-Mar-13	40	32	50	46	43	50	0.00	0.06		
4-Mar-13	49	29	67	48	42	54	0.00	0.08		
5-Mar-13	61	46	75	51	48	55	0.00	0.09		
6-Mar-13	47	41	56	50	46	54	0.01	0.08		
7-Mar-13	46	32	64	50	44	56	0.00	0.08		
8-Mar-13	52	34	73	51	46	58	0.00	0.09		
9-Mar-13	56	40	71	53	48	57	0.00	0.09		
10-Mar-13	63	53	77	55	51	61	0.00	0.11		
11-Mar-13	62	52	75	55	53	57	1.37	0.08		
12-Mar-13	53	44	65	53	50	57	0.00	0.09		
13-Mar-13	53	39	66	52	48	57	0.00	0.09		
14-Mar-13	49	38	63	51	46	56	0.00	0.09		
15-Mar-13	56	37	75	52	47	59	0.00	0.1		
16-Mar-13	62	43	76	55	50	60	0.00	0.11		
17-Mar-13	61	52	70	55	53	57	0.06	0.07		
18-Mar-13	69	59	81	58	55	63	0.41	0.1		
19-Mar-13	63	56	77	59	56	65	0.36	0.1		
20-Mar-13	58	43	68	57	54	60	0.00	0.08		
21-Mar-13	52	42	66	54	50	58	0.00	0.09		
22-Mar-13	56	47	66	54	50	57	0.00	0.08		
23-Mar-13	58	55	63	54	53	55	0.37	0.05		
24-Mar-13	72	50	83	60	54	66	0.28	0.13		
25-Mar-13	49	40	60	55	51	58	0.00	0.1		
26-Mar-13	45	35	55	51	47	56	0.00	0.09		
27-Mar-13	46	32	62	51	46	58	0.00	0.09		
28-Mar-13	52	34	71	53	47	60	0.00	0.1		
29-Mar-13	58	38	76	56	50	62	0.00	0.11		
30-Mar-13	62	44	76	57	52	62	0.00	0.11		
31-Mar-13	66	56	79	59	55	62	0.13	0.1		
High			83			66				
Low		29			42					
Average	55	42	68	53	49	58				
Days over 95 ^o			0	Total for Month			2.99	2.76	16.9	6.3
Days below 32 ^o			3	Number of Rain Days			8.00		28.0	
				59 year Average			5.43		15.5	
				Deviation from Average			-2.44		1.4	
				Net Gain/loss (Rain - ET)				0.23		10.6

Year Cumulative

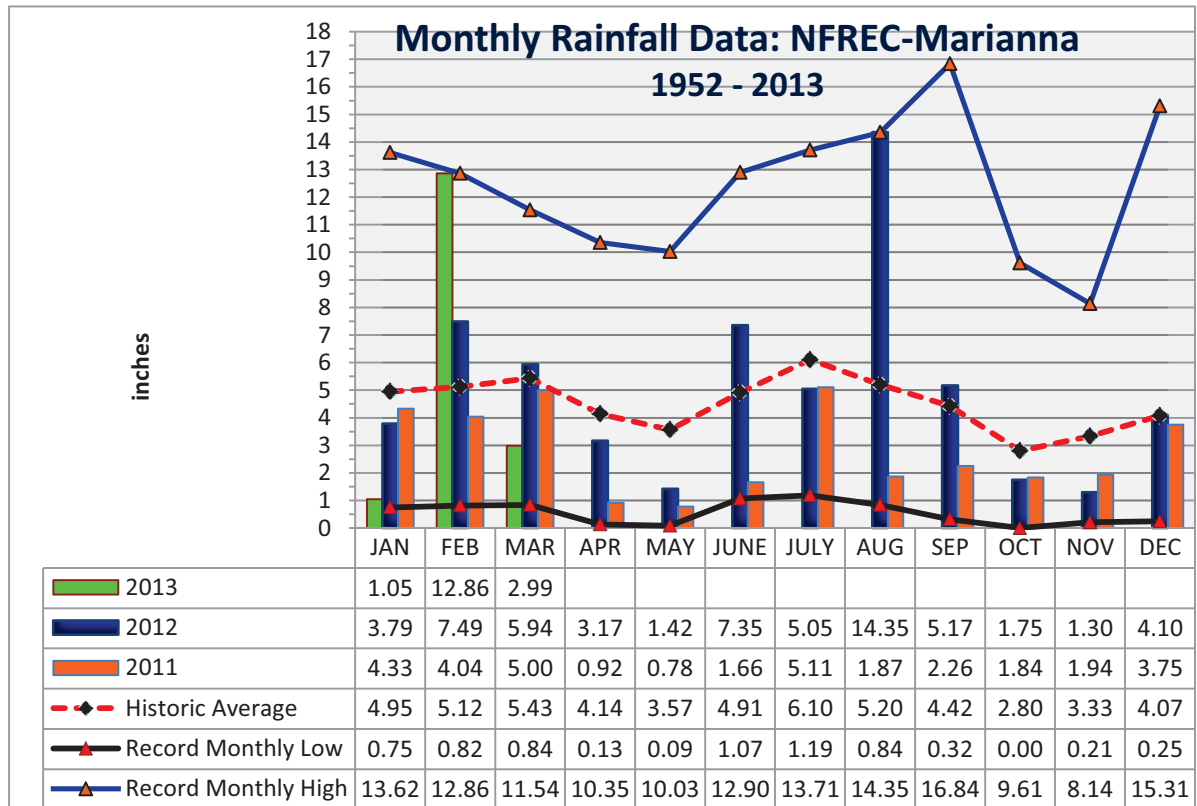
Rain	ET
16.9	6.3
28.0	
15.5	
1.4	
	10.6

Jackson County
Monthly Total Rainfall, 1952 - 2012
No FL Research & Education Cntr, Marianna, FL



YEAR	JAN	FEB	MAR	APR	MAY	JUNE	JULY	AUG	SEP	OCT	NOV	DEC	TOTAL
1952	1.14	8.88	4.48	2.11	5.13	1.12	5.95	8.81	3.09	0.65	3.26	3.42	48.04
1953	4.84	7.26	3.03	8.43	2.43	3.97	6.84	1.63	6.33	0.65	4.09	<u>15.31</u>	64.81
1954	1.33	3.49	2.62	2.58	1.96	3.46	3.28	2.84	1.72	1.30	2.66	1.44	28.68
1955	3.66	1.83	0.84	5.80	3.03	1.62	6.75	3.75	2.44	2.10	0.72	0.77	33.31
1956	3.59	5.18	3.77	2.04	4.03	5.45	8.52	4.09	6.44	5.08	0.28	3.34	51.81
1957	0.75	2.65	5.17	5.74	4.60	5.75	9.83	5.91	<u>16.84</u>	1.31	6.24	2.22	67.01
1958	4.48	3.61	4.73	7.22	5.57	6.00	8.39	3.45	3.68	1.88	1.75	2.32	53.08
1959	3.67	7.06	8.50	5.73	6.95	3.77	4.83	3.67	3.07	7.93	0.21	1.53	56.92
1960	3.36	7.08	3.41	6.80	3.20	4.75	4.97	4.80	6.22	2.00	0.47	2.35	49.41
1961	4.23	4.15	3.64	5.57	3.97	4.41	3.99	11.09	2.60	0.00	2.84	6.23	52.72
1962	1.72	2.80	8.13	3.28	2.86	3.67	7.97	6.07	3.07	2.82	5.16	1.67	49.22
1963	7.31	3.02	3.18	1.36	3.50	7.99	5.16	<i>1.50</i>	5.25	0.01	4.22	6.05	48.55
1964	10.80	6.81	6.41	9.47	2.23	5.68	9.22	3.07	7.47	<u>9.61</u>	3.35	6.44	<u>80.56</u>
1965	2.63	6.09	5.51	3.96	0.18	9.60	3.26	4.18	4.48	3.41	1.81	3.60	48.71
1966	5.56	9.84	2.57	0.77	5.80	3.13	3.25	9.82	5.09	1.41	2.03	4.62	53.89
1967	8.27	3.32	2.19	0.13	2.61	7.02	6.49	3.58	1.40	1.86	2.40	7.98	47.25
1968	1.28	2.30	3.40	2.50	3.39	1.18	5.45	4.61	2.99	1.41	5.11	5.34	38.96
1969	1.68	3.49	7.08	4.54	3.01	1.71	13.18	3.05	5.64	1.50	1.22	3.80	49.90
1970	4.16	9.20	8.86	1.83	1.81	3.69	5.04	8.01	0.49	4.40	2.21	3.13	52.83
1971	1.97	6.11	7.15	3.17	3.03	3.85	5.20	6.76	2.47	1.84	1.94	3.70	47.19
1972	3.62	6.03	6.41	0.38	2.87	8.89	3.78	5.39	2.14	2.44	3.29	3.77	49.01
1973	8.14	7.71	8.38	7.60	6.87	3.63	11.12	4.51	5.40	0.27	3.64	5.33	72.60
1974	5.24	5.80	2.66	3.40	3.78	1.56	3.29	8.01	4.68	0.84	2.14	2.89	44.29
1975	10.21	6.36	4.91	<u>10.35</u>	3.97	4.10	<u>13.71</u>	5.40	3.81	4.35	2.89	3.28	73.34
1976	6.99	1.50	4.89	1.87	8.89	3.08	3.03	3.47	5.47	6.18	5.72	3.97	55.06
1977	3.47	1.81	6.52	0.88	0.60	6.36	3.55	5.22	9.83	2.59	<u>8.14</u>	4.19	53.16
1978	7.28	3.28	7.25	4.65	6.73	3.79	7.25	4.90	0.98	0.20	6.01	3.65	55.97
1979	7.30	7.78	3.26	7.75	6.22	1.31	7.49	6.30	11.51	0.53	4.47	2.84	66.76
1980	6.58	2.96	<u>11.54</u>	9.29	4.50	3.50	5.87	2.53	4.56	4.71	1.52	0.25	57.81
1981	1.70	5.32	5.94	3.03	2.73	4.74	4.02	2.53	2.44	1.75	0.85	4.94	39.99
1982	4.17	5.61	2.91	5.93	5.39	3.00	7.51	4.42	6.00	2.65	2.34	9.14	59.07
1983	4.92	6.84	8.53	7.88	2.27	5.66	1.19	2.53	8.97	3.52	5.90	7.65	65.86
1984	5.49	5.01	8.62	6.29	2.50	5.31	12.01	5.76	0.32	1.60	1.63	0.80	55.34
1985	4.60	4.46	2.60	1.18	4.44	5.68	3.68	5.58	1.42	7.42	7.91	5.34	54.31
1986	5.68	10.27	3.21	0.83	2.26	1.85	2.75	4.12	2.35	2.22	4.40	5.68	45.62
1987	8.62	5.52	7.23	0.40	4.46	5.43	5.51	4.18	2.27	0.06	4.02	0.81	48.51
1988	5.57	6.40	8.41	2.69	0.28	1.07	5.43	3.98	5.53	1.98	3.28	1.23	45.85
1989	1.59	2.74	4.96	3.63	7.01	<u>12.90</u>	11.19	3.06	3.36	7.20	4.71	5.45	67.80
1990	5.26	4.57	4.55	3.00	3.22	4.02	3.65	2.91	0.85	1.34	0.93	3.42	37.72
1991	<u>13.62</u>	3.44	9.00	5.32	<u>10.03</u>	5.30	10.67	3.89	1.53	1.17	1.60	3.00	68.57
1992	8.37	6.29	7.92	2.50	1.41	11.16	8.69	6.72	3.19	2.08	7.40	2.93	68.66
1993	12.00	3.38	7.41	1.50	1.60	4.18	6.68	3.89	3.44	2.90	2.27	3.63	52.88
1994	8.64	2.53	6.25	4.34	1.82	11.41	10.95	9.08	6.44	7.62	2.53	3.79	75.40
1995	5.23	3.13	4.29	4.35	3.90	5.56	3.02	6.16	0.86	7.51	4.12	1.78	49.91

YEAR	JAN	FEB	MAR	APR	MAY	JUNE	JULY	AUG	SEP	OCT	NOV	DEC	TOTAL
1996	3.64	5.99	8.47	5.76	1.50	5.43	2.83	14.28	5.32	3.81	2.01	3.65	62.69
1997	6.68	5.29	2.63	10.08	5.91	6.41	5.73	4.65	3.78	2.10	6.85	8.44	68.55
1998	6.28	8.30	6.11	2.24	1.45	2.35	4.37	2.20	16.31	0.30	2.05	1.98	53.94
1999	6.95	2.90	3.61	1.50	6.71	8.99	8.64	4.02	4.33	3.13	3.56	2.50	56.84
2000	3.78	4.96	4.48	4.05	0.09	4.00	3.40	7.15	7.20	0.71	4.43	3.21	47.46
2001	2.16	0.82	10.00	1.99	2.52	8.24	4.66	8.21	1.90	1.51	1.70	0.78	44.49
2002	3.82	2.44	5.51	5.78	2.19	3.45	10.34	3.30	11.83	7.36	7.76	5.99	69.77
2003	2.30	7.03	8.18	4.89	3.11	6.11	7.84	5.99	2.39	3.58	3.04	3.12	57.58
2004	3.19	7.66	0.90	4.37	1.19	6.66	4.92	1.67	10.01	3.89	4.97	3.25	52.68
2005	3.33	2.31	9.05	7.04	1.67	7.47	9.44	11.71	1.62	0.03	3.15	4.81	61.63
2006	4.82	3.90	0.91	1.61	4.97	1.99	2.22	5.18	0.91	3.09	3.41	5.43	38.44
2007	5.99	2.45	1.10	0.99	1.57	3.97	3.94	4.18	1.27	4.79	1.89	4.03	36.17
2008	4.26	9.00	9.11	4.28	1.46	8.64	4.02	9.29	0.74	5.11	3.18	8.23	67.32
2009	2.33	3.26	7.11	7.73	9.17	2.78	3.88	3.19	5.22	3.39	2.35	9.57	59.98
2010	7.53	3.99	3.41	4.01	5.09	2.92	2.31	0.84	1.33	0.22	5.82	0.63	38.10
2011	4.33	4.04	5.00	0.92	0.78	1.66	5.11	1.87	2.26	1.84	1.94	3.75	33.50
2012	3.79	7.49	5.94	3.17	1.42	7.35	5.05	14.35	5.17	1.75	1.30	4.10	60.88
2013	1.05	12.86	2.99										
Deviation from the Average Monthly Rainfall													
Inches	-3.90	7.74	-2.44										
Monthly Average Rainfall, 1952-2013													
AVG.	4.95	5.12	5.43	4.14	3.57	4.91	6.10	5.20	4.42	2.80	3.33	4.07	53.92
% of Annual Rainfall Occuring each Month													
	9.2%	9.5%	10.1%	7.7%	6.6%	9.1%	11.3%	9.6%	8.2%	5.2%	6.2%	7.5%	
Record High/Low for the Month													
LOW	0.75	0.82	0.84	0.13	0.09	1.07	1.19	0.84	0.32	0.00	0.21	0.25	28.68
HIGH	13.62	12.86	11.54	10.35	10.03	12.90	13.71	14.35	16.84	9.61	8.14	15.31	80.56

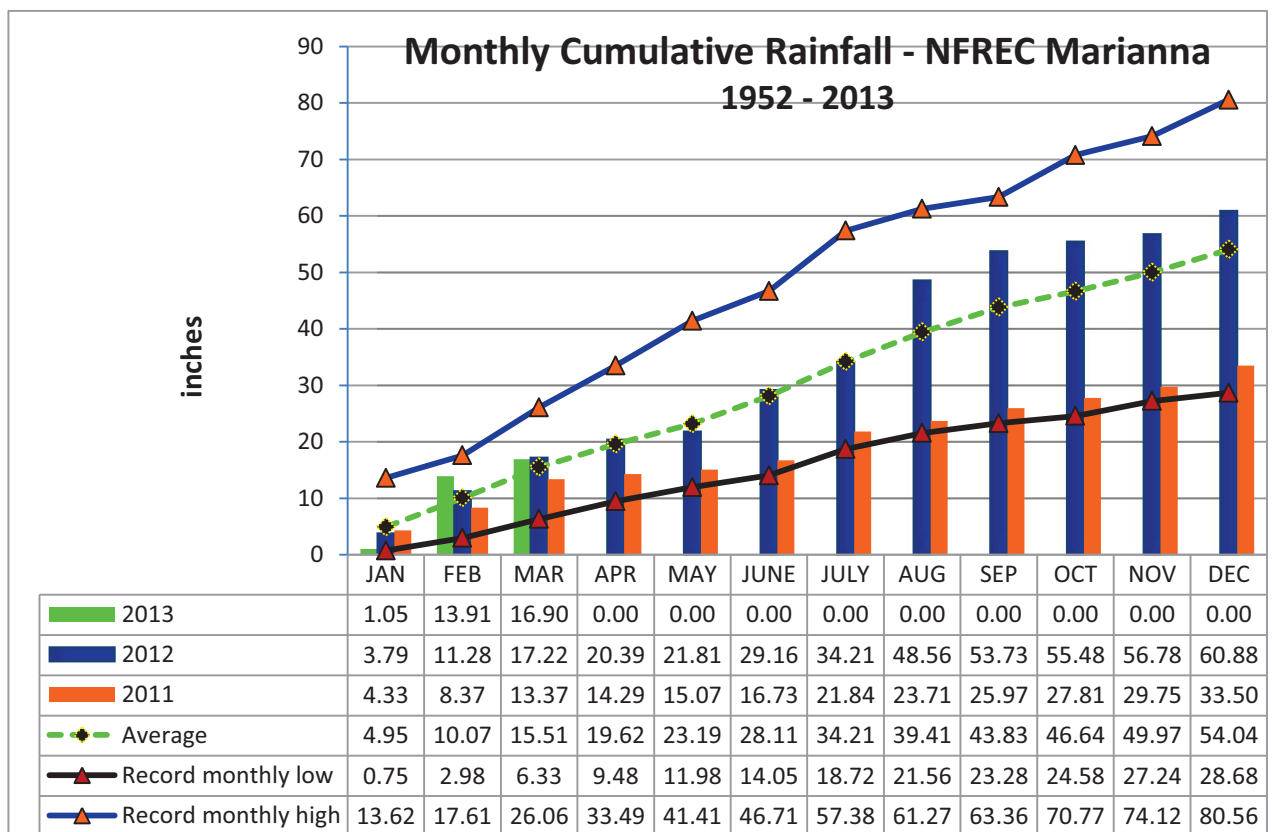


Jackson County
Monthly Cumulative Rainfall, 1952 -2012
North Florida Research & Education Center Marianna, FL



YEAR	JAN	FEB	MAR	APR	MAY	JUNE	JULY	AUG	SEP	OCT	NOV	DEC
1952	1.14	10.02	14.50	16.61	21.74	22.86	28.81	37.62	40.71	41.36	44.62	48.04
1953	4.84	12.10	15.13	23.56	25.99	29.96	36.80	38.43	44.76	45.41	49.50	64.81
1954	1.33	4.82	7.44	10.02	11.98	15.44	18.72	21.56	23.28	24.58	27.24	28.68
1955	3.66	5.49	6.33	12.13	15.16	16.78	23.53	27.28	29.72	31.82	32.54	33.31
1956	3.59	8.77	12.54	14.58	18.61	24.06	32.58	36.67	43.11	48.19	48.47	51.81
1957	0.75	3.40	8.57	14.31	18.91	24.66	34.49	40.40	57.24	58.55	64.79	67.01
1958	4.48	8.09	12.82	20.04	25.61	31.61	40.00	43.45	47.13	49.01	50.76	53.08
1959	3.67	10.73	19.23	24.96	31.91	35.68	40.51	44.18	47.25	55.18	55.39	56.92
1960	3.36	10.44	13.85	20.65	23.85	28.60	33.57	38.37	44.59	46.59	47.06	49.41
1961	4.23	8.38	12.02	17.59	21.56	25.97	29.96	41.05	43.65	43.65	46.49	52.72
1962	1.72	4.52	12.65	15.93	18.79	22.46	30.43	36.50	39.57	42.39	47.55	49.22
1963	7.31	10.33	13.51	14.87	18.37	26.36	31.52	33.02	38.27	38.28	42.50	48.55
1964	10.80	<u>17.61</u>	24.02	<u>33.49</u>	35.72	41.40	50.62	53.69	61.16	<u>70.77</u>	<u>74.12</u>	<u>80.56</u>
1965	2.63	8.72	14.23	18.19	18.37	27.97	31.23	35.41	39.89	43.30	45.11	48.71
1966	5.56	15.40	17.97	18.74	24.54	27.67	30.92	40.74	45.83	47.24	49.27	53.89
1967	8.27	11.59	13.78	13.91	16.52	23.54	30.03	33.61	35.01	36.87	39.27	47.25
1968	1.28	3.58	6.98	9.48	12.87	14.05	19.50	24.11	27.10	28.51	33.62	38.96
1969	1.68	5.17	12.25	16.79	19.80	21.51	34.69	37.74	43.38	44.88	46.10	49.90
1970	4.16	13.36	22.22	24.05	25.86	29.55	34.59	42.60	43.09	47.49	49.70	52.83
1971	1.97	8.08	15.23	18.40	21.43	25.28	30.48	37.24	39.71	41.55	43.49	47.19
1972	3.62	9.65	16.06	16.44	19.31	28.20	31.98	37.37	39.51	41.95	45.24	49.01
1973	8.14	15.85	24.23	31.83	38.70	42.33	53.45	57.96	<u>63.36</u>	63.63	67.27	72.60
1974	5.24	11.04	13.70	17.10	20.88	22.44	25.73	33.74	38.42	39.26	41.40	44.29
1975	10.21	16.57	21.48	31.83	35.80	39.90	53.61	59.01	62.82	67.17	70.06	73.34
1976	6.99	8.49	13.38	15.25	24.14	27.22	30.25	33.72	39.19	45.37	51.09	55.06
1977	3.47	5.28	11.80	12.68	13.28	19.64	23.19	28.41	38.24	40.83	48.97	53.16
1978	7.28	10.56	17.81	22.46	29.19	32.98	40.23	45.13	46.11	46.31	52.32	55.97
1979	7.30	15.08	18.34	26.09	32.31	33.62	41.11	47.41	58.92	59.45	63.92	66.76
1980	6.58	9.54	21.08	30.37	34.87	38.37	44.24	46.77	51.33	56.04	57.56	57.81
1981	1.70	7.02	12.96	15.99	18.72	23.46	27.48	30.01	32.45	34.20	35.05	39.99
1982	4.17	9.78	12.69	18.62	24.01	27.01	34.52	38.94	44.94	47.59	49.93	59.07
1983	4.92	11.76	20.29	28.17	30.44	36.10	37.29	39.82	48.79	52.31	58.21	65.86
1984	5.49	10.50	19.12	25.41	27.91	33.22	45.23	50.99	51.31	52.91	54.54	55.34
1985	4.60	9.06	11.66	12.84	17.28	22.96	26.64	32.22	33.64	41.06	48.97	54.31
1986	5.68	15.95	19.16	19.99	22.25	24.10	26.85	30.97	33.32	35.54	39.94	45.62
1987	8.62	14.14	21.37	21.77	26.23	31.66	37.17	41.35	43.62	43.68	47.70	48.51
1988	5.57	11.97	20.38	23.07	23.35	24.42	29.85	33.83	39.36	41.34	44.62	45.85
1989	1.59	4.33	9.29	12.92	19.93	32.83	44.02	47.08	50.44	57.64	62.35	67.80
1990	5.26	9.83	14.38	17.38	20.60	24.62	28.27	31.18	32.03	33.37	34.30	37.72
1991	<u>13.62</u>	17.06	<u>26.06</u>	31.38	<u>41.41</u>	<u>46.71</u>	<u>57.38</u>	<u>61.27</u>	62.80	63.97	65.57	68.57
1992	8.37	14.66	22.58	25.08	26.49	37.65	46.34	53.06	56.25	58.33	65.73	68.66
1993	12.00	15.38	22.79	24.29	25.89	30.07	36.75	40.64	44.08	46.98	49.25	52.88
1994	8.64	11.17	17.42	21.76	23.58	34.99	45.94	55.02	61.46	69.08	71.61	75.40
1995	5.23	8.36	12.65	17.00	20.90	26.46	29.48	35.64	36.50	44.01	48.13	49.91

YEAR	JAN	FEB	MAR	APR	MAY	JUNE	JULY	AUG	SEP	OCT	NOV	DEC
1996	3.64	9.63	18.10	23.86	25.36	30.79	33.62	47.90	53.22	57.03	59.04	62.69
1997	6.68	11.97	14.60	24.68	30.59	37.00	42.73	47.38	51.16	53.26	60.11	68.55
1998	6.28	14.58	20.69	22.93	24.38	26.73	31.10	33.30	49.61	49.91	51.96	53.94
1999	6.95	9.85	13.46	14.96	21.67	30.66	39.30	43.32	47.65	50.78	54.34	56.84
2000	3.78	8.74	13.22	17.27	17.36	21.36	24.76	31.91	39.11	39.82	44.25	47.46
2001	2.16	2.98	12.98	14.97	17.49	25.73	30.39	38.60	40.50	42.01	43.71	44.49
2002	3.82	6.26	11.77	17.55	19.74	23.19	33.53	36.83	48.66	56.02	63.78	69.77
2003	2.30	9.33	17.51	22.40	25.51	31.62	39.46	45.45	47.84	51.42	54.46	57.58
2004	3.19	10.85	11.75	16.12	17.31	23.97	28.89	30.56	40.57	44.46	49.43	52.68
2005	3.33	5.64	14.69	21.73	23.40	30.87	40.31	52.02	53.64	53.67	56.82	61.63
2006	4.82	8.72	9.63	11.24	16.21	18.20	20.42	25.60	26.51	29.60	33.01	38.44
2007	5.99	8.44	9.54	10.53	12.10	16.07	20.01	24.19	25.46	30.25	32.14	36.17
2008	4.26	13.26	22.37	26.65	28.11	36.75	40.77	50.06	50.80	55.91	59.09	67.32
2009	2.33	5.59	12.70	20.43	29.60	32.38	36.26	39.45	44.67	48.06	50.41	59.98
2010	7.53	11.52	14.93	18.94	24.03	26.95	29.26	30.10	31.43	31.65	37.47	38.10
2011	4.33	8.37	13.37	14.29	15.07	16.73	21.84	23.71	25.97	27.81	29.75	33.50
2012	3.79	11.28	17.22	20.39	21.81	29.16	34.21	48.56	53.73	55.48	56.78	60.88
2013	1.05	13.91	16.90									
2013 Deviation from the Average Accumulation												
Inches	-3.90	3.84	1.39									
Average Accumulation, 1952-2013												
Inches	4.95	10.07	15.51	19.62	23.19	28.11	34.21	39.41	43.83	46.64	49.97	54.04
Record High/Low Accumulation												
LOW	0.75	2.98	6.33	9.48	11.98	14.05	18.72	21.56	23.28	24.58	27.24	28.68
HIGH	13.62	17.61	26.06	33.49	41.41	46.71	57.38	61.27	63.36	70.77	74.12	80.56



2013 North Florida Rainfall Summary

FAWN Station	Jan	Feb	Mar	Total
Live Oak	0.9	6.4	4.6	11.9
Monticello	1.1	12.3	3.5	16.9
Quincy	1.3	13.7	5.5	20.5
Carrabelle	1.2	9.8	3.7	14.6
Marianna	1.1	12.9	3.0	16.9
Jay	2.5	10.2	1.4	14.1
6 Station Average	1.3	10.9	3.6	15.8

