



Jackson County 2014 Weather Data

62 Years of Weather Data Recorded at the UF/IFAS Marianna North Florida Research and Education Center



Doug Mayo
Jackson County Extension Director

1952-2008 Rainfall Data compiled by
Ed Jowers, Emeritus County Extension Director

Data provided by Florida Automated Weather Station (FAWN)
UF/IFAS North Florida Research and Education Center
Greenwood, Florida



<http://fawn.ifas.ufl.edu/station.php?id=130>

Tower Name	Tower Number	Latitude Degree, Minutes	Latitude Degrees Minutes, Seconds	Latitude Degrees Decimal	Longitude Degree, Minutes	Longitude Degrees Minutes, Seconds	Longitude Degrees Decimal	Elevation Feet
Marianna	130.00	N 30°51.000'	N 30°50'00.00"	N 30.85000°	-85°09.910'	-85°09'54.60"	-85.16516°	115'

2014 Marianna UF/IFAS FAWN Weather Summary

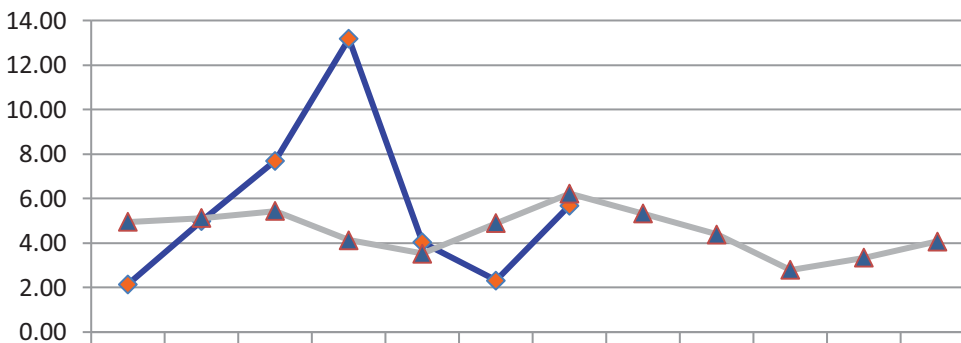
Month	6' Air Temp			Soil Temp			Rainfall Inches	Dev from 61 yr Avg
	High	Low	Avg	High	Low	Avg		
January	69	17	43	53	31	41	2.2	-2.8
February	78	28	53	60	38	49	5.0	-0.1
March	79	32	56	66	41	54	7.7	2.3
April	87	39	66	75	50	62	13.2	9.1
May	94	50	73	87	58	72	4.0	0.5
June	95	67	79	89	70	78	2.3	-2.6
July	96	63	79	90	72	79	5.7	-0.5
2014	96	17	64	90	31	62	40.1	5.8

Data: UF/IFAS Florida Automated Weather Network Marianna Station

Total days in 2014 <32° 17

Total days in 2014 >95° 1

Monthly Rainfall @ Marianna FAWN



	JAN	FEB	MAR	APR	MAY	JUNE	JULY	AUG	SEP	OCT	NOV	DEC
2014	2.15	4.99	7.70	13.18	4.03	2.32	5.69					
61 yr avg	4.95	5.12	5.43	4.13	3.52	4.89	6.22	5.33	4.38	2.79	3.34	4.08

◆ 2014 ▲ 61 yr avg

January Daily Weather Data

Temperature							Precipitation				
Date	Air Temp 6 ft			Soil Temp 4 inch			Rain	Evapo Trans			
	Avg	Min	Max	Avg	Min	Max	Inches	Inches			
1-Jan-14	48	44	52	46	44	47	0.06	0.04			
2-Jan-14	50	35	56	46	43	48	0.29	0.05			
3-Jan-14	32	26	41	40	37	43	0.00	0.03			
4-Jan-14	39	26	47	39	36	42	0.00	0.04			
5-Jan-14	55	42	66	44	41	48	0.00	0.05			
6-Jan-14	36	23	62	43	36	48	0.23	0.06			
7-Jan-14	22	17	29	34	32	37	0.00	0.02			
8-Jan-14	33	19	45	35	31	39	0.00	0.03			
9-Jan-14	47	40	57	40	37	42	0.03	0.04			
10-Jan-14	56	50	64	45	42	47	0.05	0.05			
11-Jan-14	63	52	68	50	48	53	0.41	0.05			
12-Jan-14	50	40	63	47	43	51	0.00	0.04			
13-Jan-14	52	40	64	47	43	50	0.69	0.05			
14-Jan-14	55	40	63	49	46	53	0.02	0.05			
15-Jan-14	43	35	55	45	42	49	0.00	0.04			
16-Jan-14	38	27	49	41	37	45	0.02	0.03			
17-Jan-14	47	33	61	41	37	46	0.00	0.05			
18-Jan-14	39	26	51	39	36	43	0.00	0.04			
19-Jan-14	47	36	59	41	37	46	0.07	0.05			
20-Jan-14	48	31	65	42	37	47	0.00	0.05			
21-Jan-14	48	33	59	43	40	47	0.00	0.05			
22-Jan-14	33	26	44	39	35	43	0.00	0.04			
23-Jan-14	37	27	48	39	36	44	0.00	0.04			
24-Jan-14	35	29	38	39	36	42	0.00	0.03			
25-Jan-14	42	34	53	39	37	42	0.00	0.05			
26-Jan-14	46	32	59	40	36	44	0.00	0.05			
27-Jan-14	57	48	69	45	41	49	0.07	0.06			
28-Jan-14	38	30	53	42	38	47	0.20	0.05			
29-Jan-14	25	22	30	35	32	38	0.00	0.03			
30-Jan-14	32	22	40	35	32	39	0.01	0.04			
31-Jan-14	39	27	55	37	33	42	0.00	0.05			
High			69			53					
Low		17			31						
Average	43	33	54	41	38	45					
Days over 95 ⁰	0			Total for Month			2.15	1.35	2.2	1.4	
				Number of Rain Days			13.00			13.0	
Days below 32 ⁰	15			Historic Average			4.95				
				Deviation from Average			-2.80			-2.8	
				Net Gain/loss (Rain - ET)						0.8	

Year Cumulative
Rain **ET**
 2.2 1.4
 13.0
 5.0
 -2.8
 0.8

February Daily Weather Data

Date	Temperature						Precipitation			
	Air Temp 6 ft			Soil Temp 4 inch			Rain	Evapo Trans		
	Avg	Min	Max	Avg	Min	Max	Inches	Inches		
1-Feb-14	52	40	64	42	38	47	0.00	0.06		
2-Feb-14	62	53	74	48	44	53	0.01	0.07		
3-Feb-14	62	56	67	51	50	53	0.09	0.05		
4-Feb-14	63	55	76	52	50	56	0.00	0.07		
5-Feb-14	59	39	70	54	48	57	0.01	0.08		
6-Feb-14	37	34	40	45	43	48	0.04	0.04		
7-Feb-14	43	32	56	44	39	50	0.00	0.06		
8-Feb-14	50	43	63	47	44	53	0.16	0.07		
9-Feb-14	52	38	67	48	43	54	0.00	0.07		
10-Feb-14	56	41	70	49	44	54	0.00	0.07		
11-Feb-14	53	43	61	51	49	53	0.08	0.06		
12-Feb-14	40	36	43	44	41	48	1.77	0.04		
13-Feb-14	42	36	55	42	39	46	0.00	0.07		
14-Feb-14	48	32	60	43	38	48	0.00	0.07		
15-Feb-14	47	37	57	45	41	50	0.09	0.07		
16-Feb-14	49	33	66	45	39	52	0.00	0.08		
17-Feb-14	56	39	69	48	43	53	0.00	0.08		
18-Feb-14	63	54	75	52	48	56	0.00	0.08		
19-Feb-14	64	51	77	54	49	60	0.00	0.09		
20-Feb-14	67	58	78	56	53	60	0.00	0.09		
21-Feb-14	61	48	70	57	53	60	0.90	0.09		
22-Feb-14	55	42	68	53	48	58	0.00	0.08		
23-Feb-14	55	46	61	51	49	52	1.04	0.05		
24-Feb-14	63	56	72	55	52	60	0.00	0.09		
25-Feb-14	62	49	75	56	51	60	0.00	0.09		
26-Feb-14	49	40	58	52	47	55	0.80	0.06		
27-Feb-14	41	33	52	47	43	51	0.00	0.07		
28-Feb-14	45	28	61	47	40	53	0.00	0.07		
High			78			60				
Low		28			38					
Average	53	43	65	49	45	54				
Days over 95 ^o	0			Total for Month			4.99	1.97	7.1	3.3
				Number of Rain Days			11.00		24.0	
				59 year Average			5.12		10.1	
Days below 32 ^o	2			Deviation from Average			-0.13		-2.9	
				Net Gain/loss (Rain - ET)				3.02		3.8

Year Cumulative
Rain ET
7.1 3.3
24.0
10.1
-2.9
3.8

March Daily Weather Data

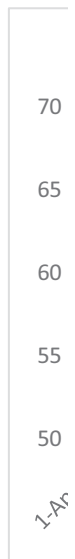
Date	Temperature						Precipitation			
	Air Temp 6 ft			Soil Temp 4 inch			Rain	Evapo Trans		
	Avg	Min	Max	Avg	Min	Max	Inches	Inches		
1-Mar-14	54	40	70	50	44	57	0.00	0.09		
2-Mar-14	59	42	76	52	46	59	0.00	0.1		
3-Mar-14	58	41	72	53	50	56	0.00	0.09		
4-Mar-14	43	39	46	48	47	50	0.00	0.04		
5-Mar-14	46	40	56	48	45	53	0.20	0.07		
6-Mar-14	45	38	49	47	44	49	0.84	0.05		
7-Mar-14	44	38	54	45	42	48	0.01	0.06		
8-Mar-14	52	36	67	48	41	56	0.00	0.09		
9-Mar-14	58	45	72	52	46	58	0.00	0.1		
10-Mar-14	63	47	77	54	48	61	0.00	0.11		
11-Mar-14	63	54	74	56	52	60	0.17	0.09		
12-Mar-14	62	46	73	57	52	61	0.00	0.09		
13-Mar-14	48	37	60	51	47	57	0.00	0.09		
14-Mar-14	52	36	69	51	46	58	0.00	0.09		
15-Mar-14	58	43	69	53	48	56	0.00	0.08		
16-Mar-14	60	57	69	52	52	53	3.69	0.05		
17-Mar-14	59	52	63	53	51	54	0.47	0.06		
18-Mar-14	52	49	58	52	50	55	0.21	0.07		
19-Mar-14	59	51	72	55	50	62	0.00	0.11		
20-Mar-14	61	48	75	57	51	63	0.00	0.11		
21-Mar-14	62	46	75	58	52	64	0.00	0.11		
22-Mar-14	64	54	78	60	55	66	0.00	0.12		
23-Mar-14	62	55	72	59	57	63	0.03	0.09		
24-Mar-14	59	51	65	58	55	62	0.00	0.09		
25-Mar-14	56	44	62	58	54	62	0.00	0.1		
26-Mar-14	46	32	56	54	49	60	0.00	0.08		
27-Mar-14	56	41	68	55	50	60	0.00	0.1		
28-Mar-14	60	58	62	55	54	56	1.57	0.04		
29-Mar-14	63	54	72	57	53	61	0.51	0.11		
30-Mar-14	55	45	69	56	50	62	0.00	0.12		
31-Mar-14	60	41	79	57	50	65	0.00	0.12		
High			79			66				
Low		32			41					
Average	56	45	67	54	49	58				
Days over 95 ^o			0	Total for Month			7.70	2.72	14.8	6.0
				Number of Rain Days			10.00		34.0	
				59 year Average			5.43		15.5	
Days below 32 ^o		0		Deviation from Average			2.27		-0.7	
				Net Gain/loss (Rain - ET)				4.98		8.8

Year Cumulative

Rain	ET
14.8	6.0
34.0	
15.5	
-0.7	
	8.8

April Daily Weather Data

Date	Temperature						Precipitation	
	Air Temp 6 ft			Soil Temp 4 inch			Rain	Evapo Trans
	Avg	Min	Max	Avg	Min	Max	Inches	Inches
1-Apr-14	61	43	81	59	53	66	0.00	0.13
2-Apr-14	63	48	81	60	55	66	0.00	0.12
3-Apr-14	69	58	82	61	57	67	0.00	0.14
4-Apr-14	71	62	81	63	59	67	0.00	0.12
5-Apr-14	69	63	78	64	60	67	0.12	0.1
6-Apr-14	67	65	70	62	61	64	0.03	0.06
7-Apr-14	69	63	72	61	60	62	2.54	0.06
8-Apr-14	59	52	67	60	56	65	0.00	0.12
9-Apr-14	58	49	71	59	55	64	0.00	0.13
10-Apr-14	61	45	76	60	54	67	0.00	0.13
11-Apr-14	64	49	77	61	56	66	0.00	0.12
12-Apr-14	68	53	83	63	57	69	0.00	0.14
13-Apr-14	70	59	82	64	59	69	0.00	0.14
14-Apr-14	73	64	81	65	61	68	1.43	0.12
15-Apr-14	56	45	66	59	54	64	1.66	0.08
16-Apr-14	52	39	64	57	50	63	0.00	0.12
17-Apr-14	60	50	70	59	54	64	0.03	0.12
18-Apr-14	56	54	60	56	54	59	3.43	0.05
19-Apr-14	58	53	64	55	53	57	0.01	0.07
20-Apr-14	57	53	63	55	54	57	0.00	0.07
21-Apr-14	64	50	78	59	51	67	0.00	0.14
22-Apr-14	68	55	80	62	56	68	0.00	0.14
23-Apr-14	71	60	83	65	59	71	0.00	0.15
24-Apr-14	72	63	85	67	62	73	0.00	0.15
25-Apr-14	73	65	83	67	63	71	0.00	0.13
26-Apr-14	74	64	85	69	64	75	0.00	0.16
27-Apr-14	73	64	83	69	66	73	0.00	0.13
28-Apr-14	77	66	87	70	66	74	0.00	0.14
29-Apr-14	69	64	74	66	64	70	1.49	0.06
30-Apr-14	67	65	73	62	61	64	2.44	0.06
High			87			75		
Low		39			50			
Average	66	56	76	62	58	67		
Days over 95 ^o	0			Total for Month			13.18	3.40
				Number of Rain Days			10.00	
Days below 32 ^o	0			59 year Average			4.13	
				Deviation from Average			9.05	
				Net Gain/loss (Rain - ET)				9.78



Year Cumulative	
Rain	ET
28.0	9.4
44.0	
19.6	
8.4	
	18.6

May Daily Weather Data

Temperature							Precipitation	
Date	Air Temp 6 ft			Soil Temp 4 inch			Rain	Evapo Trans
	Avg	Min	Max	Avg	Min	Max	Inches	Inches
1-May-14	59	56	68	61	59	62	1.01	0.07
2-May-14	62	56	68	61	58	64	0.06	0.09
3-May-14	66	58	77	64	58	70	0.00	0.15
4-May-14	71	56	85	66	59	73	0.00	0.17
5-May-14	73	58	88	69	62	76	0.00	0.17
6-May-14	71	58	87	70	64	77	0.00	0.17
7-May-14	73	57	87	71	65	77	0.00	0.16
8-May-14	76	63	88	72	67	78	0.00	0.17
9-May-14	76	69	83	72	69	74	0.00	0.13
10-May-14	74	68	81	70	68	72	0.00	0.09
11-May-14	75	70	85	71	68	77	0.07	0.13
12-May-14	76	68	86	72	68	77	0.00	0.14
13-May-14	77	67	87	73	68	79	0.00	0.17
14-May-14	76	67	87	74	70	79	0.56	0.15
15-May-14	63	54	68	69	65	71	0.02	0.1
16-May-14	64	50	76	67	61	74	0.00	0.15
17-May-14	69	54	81	70	63	77	0.00	0.16
18-May-14	73	60	84	72	66	80	0.00	0.17
19-May-14	73	63	85	73	68	79	0.00	0.16
20-May-14	75	64	87	74	69	80	0.00	0.16
21-May-14	76	65	87	75	70	81	0.00	0.17
22-May-14	77	64	90	76	70	83	0.02	0.19
23-May-14	79	66	92	77	71	85	0.00	0.19
24-May-14	80	68	92	78	73	85	0.00	0.18
25-May-14	79	68	94	78	74	87	1.21	0.18
26-May-14	75	68	89	75	71	82	0.24	0.16
27-May-14	75	70	86	74	72	79	0.68	0.12
28-May-14	78	70	89	75	71	81	0.00	0.17
29-May-14	74	70	83	74	72	76	0.14	0.11
30-May-14	74	70	84	73	71	78	0.02	0.12
31-May-14	77	70	86	74	71	79	0.00	0.13
High			94			87		
Low		50			58			
Average	73	63	84	72	67	77		
Total for Month							4.03	4.58
Days over 95 ^o								0
Days of 100 ^o								0
Days below 32 ^o							0	
Number of Rain Days							11.00	
59 year Average							3.52	
Deviation from Average							0.51	
Net Gain/loss (Rain - ET)								-0.55

Year Cumulative	
Rain	ET
32.1	14.0
55.0	
23.2	
8.9	
	18.0

June Daily Weather Data

Temperature							Precipitation	
Date	Air Temp 6 ft			Soil Temp 4 inch			Rain	Evapo Trans
	Avg	Min	Max	Avg	Min	Max	Inches	Inches
1-Jun-14	76	70	85	74	71	78	0.09	0.14
2-Jun-14	76	69	83	73	70	76	0.00	0.13
3-Jun-14	76	70	83	74	70	77	0.00	0.13
4-Jun-14	78	67	87	75	70	80	0.00	0.16
5-Jun-14	80	69	90	77	71	83	0.00	0.19
6-Jun-14	80	70	92	79	73	85	0.31	0.19
7-Jun-14	78	68	88	77	73	82	0.00	0.15
8-Jun-14	78	70	90	78	75	83	0.03	N/A
9-Jun-14	81	70	91	78	73	85	0.00	0.19
10-Jun-14	81	72	91	79	75	84	0.00	0.19
11-Jun-14	77	71	84	78	75	81	0.00	0.15
12-Jun-14	80	70	89	78	73	84	0.00	0.18
13-Jun-14	77	71	85	77	74	80	0.19	N/A
14-Jun-14	79	69	89	78	72	85	0.00	N/A
15-Jun-14	79	70	90	79	74	85	0.00	N/A
16-Jun-14	80	71	93	80	75	88	0.66	N/A
17-Jun-14	81	71	93	80	74	87	0.00	0.18
18-Jun-14	82	71	94	81	75	87	0.00	0.2
19-Jun-14	80	73	93	80	76	87	0.16	0.17
20-Jun-14	78	71	94	79	74	87	0.01	0.17
21-Jun-14	81	71	93	79	74	85	0.01	0.17
22-Jun-14	78	70	91	79	75	85	0.76	0.16
23-Jun-14	75	70	88	77	73	84	0.01	0.15
24-Jun-14	78	72	88	77	74	82	0.08	0.15
25-Jun-14	79	72	89	78	74	83	0.01	0.17
26-Jun-14	81	74	89	78	75	83	0.00	0.15
27-Jun-14	82	72	93	80	75	86	0.00	0.19
28-Jun-14	81	74	92	80	76	85	0.00	0.17
29-Jun-14	84	74	95	82	76	88	0.00	0.2
30-Jun-14	84	74	95	83	78	89	0.00	0.19
High			95			89		
Low		67			70			
Average	79	71	90	78	74	84		
				Total for Month			2.32	4.22
Days over 95 ^o								
Days of 100 ^o								
Days below 32 ^o								
				Number of Rain Days			12.00	
				59 year Average			4.89	
				Deviation from Average			-2.57	
				Net Gain/loss (Rain - ET)				-1.9

Year Cumulative	
Rain	ET
34.4	18.2
67.0	
28.1	
6.3	
	16.1

July Daily Weather Data

Date	Temperature						Precipitation	
	Air Temp 6 ft			Soil Temp 4 inch			Rain	Evapo Trans
	Avg	Min	Max	Avg	Min	Max	Inches	Inches
1-Jul-14	85	74	96	83	78	89	0.00	0.2
2-Jul-14	85	75	94	83	79	88	0.00	0.17
3-Jul-14	84	75	94	84	79	90	0.00	0.2
4-Jul-14	79	68	90	83	77	90	0.00	N/A
5-Jul-14	80	66	93	83	77	90	0.00	N/A
6-Jul-14	80	66	93	83	77	89	0.00	N/A
7-Jul-14	82	70	94	83	78	90	0.00	0.19
8-Jul-14	83	72	94	84	78	90	0.00	0.19
9-Jul-14	81	73	93	84	79	90	0.00	0.18
10-Jul-14	78	71	91	82	78	88	0.89	N/A
11-Jul-14	79	71	89	80	76	85	0.00	0.15
12-Jul-14	77	72	91	79	76	86	1.54	0.14
13-Jul-14	79	72	88	78	74	83	0.11	0.15
14-Jul-14	82	73	91	80	75	86	0.00	0.19
15-Jul-14	77	71	85	78	75	80	0.22	0.11
16-Jul-14	77	71	87	77	74	81	0.00	0.14
17-Jul-14	77	66	87	78	73	83	0.00	0.18
18-Jul-14	78	67	88	77	73	82	0.00	0.14
19-Jul-14	76	72	82	75	73	77	0.94	0.08
20-Jul-14	77	72	84	75	73	77	0.06	N/A
21-Jul-14	77	73	81	74	73	77	0.00	0.1
22-Jul-14	79	71	89	77	72	83	0.00	0.17
23-Jul-14	79	71	89	77	74	82	0.92	0.16
24-Jul-14	78	72	86	77	74	79	0.06	0.13
25-Jul-14	78	72	87	77	74	80	0.34	0.14
26-Jul-14	83	77	92	79	75	84	0.00	0.19
27-Jul-14	84	76	93	80	76	85	0.00	0.19
28-Jul-14	82	71	95	80	77	86	0.60	0.18
29-Jul-14	78	69	87	78	75	83	0.01	0.19
30-Jul-14	75	67	85	77	73	83	0.00	0.18
31-Jul-14	76	63	88	78	72	84	0.00	0.17
High			96			90		
Low		63			72			
Average	79	71	90	79	75	85		
				Total for Month			5.69	4.21
Days over 95 ^o				1	Number of Rain Days			11.00
Days of 100 ^o				0	59 year Average			6.22
Days below 32 ^o				0	Deviation from Average			-0.53
				Net Gain/loss (Rain - ET)				1.48

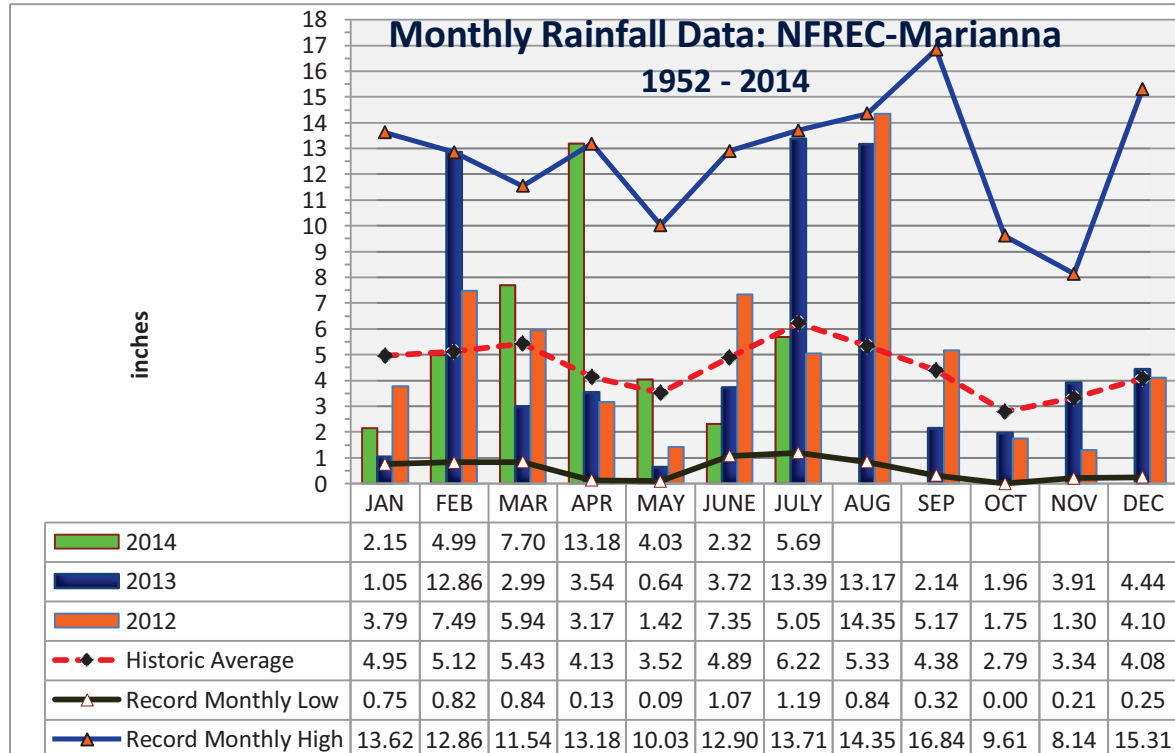
Year Cumulative	
Rain	ET
40.1	22.5
78.0	
34.3	
5.8	
	17.6

Jackson County
Monthly Total Rainfall, 1952 - 2012
No FL Research & Education Cntr, Marianna, FL



YEAR	JAN	FEB	MAR	APR	MAY	JUNE	JULY	AUG	SEP	OCT	NOV	DEC	TOTAL
1952	1.14	8.88	4.48	2.11	5.13	1.12	5.95	8.81	3.09	0.65	3.26	3.42	48.04
1953	4.84	7.26	3.03	8.43	2.43	3.97	6.84	1.63	6.33	0.65	4.09	<u>15.31</u>	64.81
1954	1.33	3.49	2.62	2.58	1.96	3.46	3.28	2.84	1.72	1.30	2.66	1.44	28.68
1955	3.66	1.83	0.84	5.80	3.03	1.62	6.75	3.75	2.44	2.10	0.72	0.77	33.31
1956	3.59	5.18	3.77	2.04	4.03	5.45	8.52	4.09	6.44	5.08	0.28	3.34	51.81
1957	0.75	2.65	5.17	5.74	4.60	5.75	9.83	5.91	<u>16.84</u>	1.31	6.24	2.22	67.01
1958	4.48	3.61	4.73	7.22	5.57	6.00	8.39	3.45	3.68	1.88	1.75	2.32	53.08
1959	3.67	7.06	8.50	5.73	6.95	3.77	4.83	3.67	3.07	7.93	0.21	1.53	56.92
1960	3.36	7.08	3.41	6.80	3.20	4.75	4.97	4.80	6.22	2.00	0.47	2.35	49.41
1961	4.23	4.15	3.64	5.57	3.97	4.41	3.99	11.09	2.60	0.00	2.84	6.23	52.72
1962	1.72	2.80	8.13	3.28	2.86	3.67	7.97	6.07	3.07	2.82	5.16	1.67	49.22
1963	7.31	3.02	3.18	1.36	3.50	7.99	5.16	1.50	5.25	0.01	4.22	6.05	48.55
1964	10.80	6.81	6.41	9.47	2.23	5.68	9.22	3.07	7.47	<u>9.61</u>	3.35	6.44	<u>80.56</u>
1965	2.63	6.09	5.51	3.96	0.18	9.60	3.26	4.18	4.48	3.41	1.81	3.60	48.71
1966	5.56	9.84	2.57	0.77	5.80	3.13	3.25	9.82	5.09	1.41	2.03	4.62	53.89
1967	8.27	3.32	2.19	0.13	2.61	7.02	6.49	3.58	1.40	1.86	2.40	7.98	47.25
1968	1.28	2.30	3.40	2.50	3.39	1.18	5.45	4.61	2.99	1.41	5.11	5.34	38.96
1969	1.68	3.49	7.08	4.54	3.01	1.71	13.18	3.05	5.64	1.50	1.22	3.80	49.90
1970	4.16	9.20	8.86	1.83	1.81	3.69	5.04	8.01	0.49	4.40	2.21	3.13	52.83
1971	1.97	6.11	7.15	3.17	3.03	3.85	5.20	6.76	2.47	1.84	1.94	3.70	47.19
1972	3.62	6.03	6.41	0.38	2.87	8.89	3.78	5.39	2.14	2.44	3.29	3.77	49.01
1973	8.14	7.71	8.38	7.60	6.87	3.63	11.12	4.51	5.40	0.27	3.64	5.33	72.60
1974	5.24	5.80	2.66	3.40	3.78	1.56	3.29	8.01	4.68	0.84	2.14	2.89	44.29
1975	10.21	6.36	4.91	10.35	3.97	4.10	<u>13.71</u>	5.40	3.81	4.35	2.89	3.28	73.34
1976	6.99	1.50	4.89	1.87	8.89	3.08	3.03	3.47	5.47	6.18	5.72	3.97	55.06
1977	3.47	1.81	6.52	0.88	0.60	6.36	3.55	5.22	9.83	2.59	<u>8.14</u>	4.19	53.16
1978	7.28	3.28	7.25	4.65	6.73	3.79	7.25	4.90	0.98	0.20	6.01	3.65	55.97
1979	7.30	7.78	3.26	7.75	6.22	1.31	7.49	6.30	11.51	0.53	4.47	2.84	66.76
1980	6.58	2.96	<u>11.54</u>	9.29	4.50	3.50	5.87	2.53	4.56	4.71	1.52	0.25	57.81
1981	1.70	5.32	5.94	3.03	2.73	4.74	4.02	2.53	2.44	1.75	0.85	4.94	39.99
1982	4.17	5.61	2.91	5.93	5.39	3.00	7.51	4.42	6.00	2.65	2.34	9.14	59.07
1983	4.92	6.84	8.53	7.88	2.27	5.66	1.19	2.53	8.97	3.52	5.90	7.65	65.86
1984	5.49	5.01	8.62	6.29	2.50	5.31	12.01	5.76	0.32	1.60	1.63	0.80	55.34
1985	4.60	4.46	2.60	1.18	4.44	5.68	3.68	5.58	1.42	7.42	7.91	5.34	54.31
1986	5.68	10.27	3.21	0.83	2.26	1.85	2.75	4.12	2.35	2.22	4.40	5.68	45.62
1987	8.62	5.52	7.23	0.40	4.46	5.43	5.51	4.18	2.27	0.06	4.02	0.81	48.51
1988	5.57	6.40	8.41	2.69	0.28	1.07	5.43	3.98	5.53	1.98	3.28	1.23	45.85
1989	1.59	2.74	4.96	3.63	7.01	<u>12.90</u>	11.19	3.06	3.36	7.20	4.71	5.45	67.80
1990	5.26	4.57	4.55	3.00	3.22	4.02	3.65	2.91	0.85	1.34	0.93	3.42	37.72
1991	<u>13.62</u>	3.44	9.00	5.32	<u>10.03</u>	5.30	10.67	3.89	1.53	1.17	1.60	3.00	68.57
1992	8.37	6.29	7.92	2.50	1.41	11.16	8.69	6.72	3.19	2.08	7.40	2.93	68.66
1993	12.00	3.38	7.41	1.50	1.60	4.18	6.68	3.89	3.44	2.90	2.27	3.63	52.88
1994	8.64	2.53	6.25	4.34	1.82	11.41	10.95	9.08	6.44	7.62	2.53	3.79	75.40
1995	5.23	3.13	4.29	4.35	3.90	5.56	3.02	6.16	0.86	7.51	4.12	1.78	49.91

YEAR	JAN	FEB	MAR	APR	MAY	JUNE	JULY	AUG	SEP	OCT	NOV	DEC	TOTAL
1996	3.64	5.99	8.47	5.76	1.50	5.43	2.83	14.28	5.32	3.81	2.01	3.65	62.69
1997	6.68	5.29	2.63	10.08	5.91	6.41	5.73	4.65	3.78	2.10	6.85	8.44	68.55
1998	6.28	8.30	6.11	2.24	1.45	2.35	4.37	2.20	16.31	0.30	2.05	1.98	53.94
1999	6.95	2.90	3.61	1.50	6.71	8.99	8.64	4.02	4.33	3.13	3.56	2.50	56.84
2000	3.78	4.96	4.48	4.05	0.09	4.00	3.40	7.15	7.20	0.71	4.43	3.21	47.46
2001	2.16	0.82	10.00	1.99	2.52	8.24	4.66	8.21	1.90	1.51	1.70	0.78	44.49
2002	3.82	2.44	5.51	5.78	2.19	3.45	10.34	3.30	11.83	7.36	7.76	5.99	69.77
2003	2.30	7.03	8.18	4.89	3.11	6.11	7.84	5.99	2.39	3.58	3.04	3.12	57.58
2004	3.19	7.66	0.90	4.37	1.19	6.66	4.92	1.67	10.01	3.89	4.97	3.25	52.68
2005	3.33	2.31	9.05	7.04	1.67	7.47	9.44	11.71	1.62	0.03	3.15	4.81	61.63
2006	4.82	3.90	0.91	1.61	4.97	1.99	2.22	5.18	0.91	3.09	3.41	5.43	38.44
2007	5.99	2.45	1.10	0.99	1.57	3.97	3.94	4.18	1.27	4.79	1.89	4.03	36.17
2008	4.26	9.00	9.11	4.28	1.46	8.64	4.02	9.29	0.74	5.11	3.18	8.23	67.32
2009	2.33	3.26	7.11	7.73	9.17	2.78	3.88	3.19	5.22	3.39	2.35	9.57	59.98
2010	7.53	3.99	3.41	4.01	5.09	2.92	2.31	0.84	1.33	0.22	5.82	0.63	38.10
2011	4.33	4.04	5.00	0.92	0.78	1.66	5.11	1.87	2.26	1.84	1.94	3.75	33.50
2012	3.79	7.49	5.94	3.17	1.42	7.35	5.05	14.35	5.17	1.75	1.30	4.10	60.88
2013	1.05	12.86	2.99	3.54	0.64	3.72	13.39	13.17	2.14	1.96	3.91	4.44	63.81
2014	2.15	4.99	7.70	13.18	4.03	2.32	5.69						40.06
Deviation from the Average Monthly Rainfall													
Inches	-2.80	-0.13	2.27	9.05	0.51	-2.57	-0.53						5.79
Monthly Average Rainfall, 1952-2013													
AVG.	4.95	5.12	5.43	4.13	3.52	4.89	6.22	5.33	4.38	2.79	3.34	4.08	54.20
% of Annual Rainfall Occuring each Month													
	9.1%	9.5%	10.0%	7.6%	6.5%	9.0%	11.5%	9.8%	8.1%	5.1%	6.2%	7.5%	
Record High/Low for the Month													
LOW	0.75	0.82	0.84	0.13	0.09	1.07	1.19	0.84	0.32	0.00	0.21	0.25	28.68
HIGH	13.62	12.86	11.54	13.18	10.03	12.90	13.71	14.35	16.84	9.61	8.14	15.31	80.56



Jackson County

Monthly Cumulative Rainfall, 1952 -2012

North Florida Research & Education Center Marianna, FL



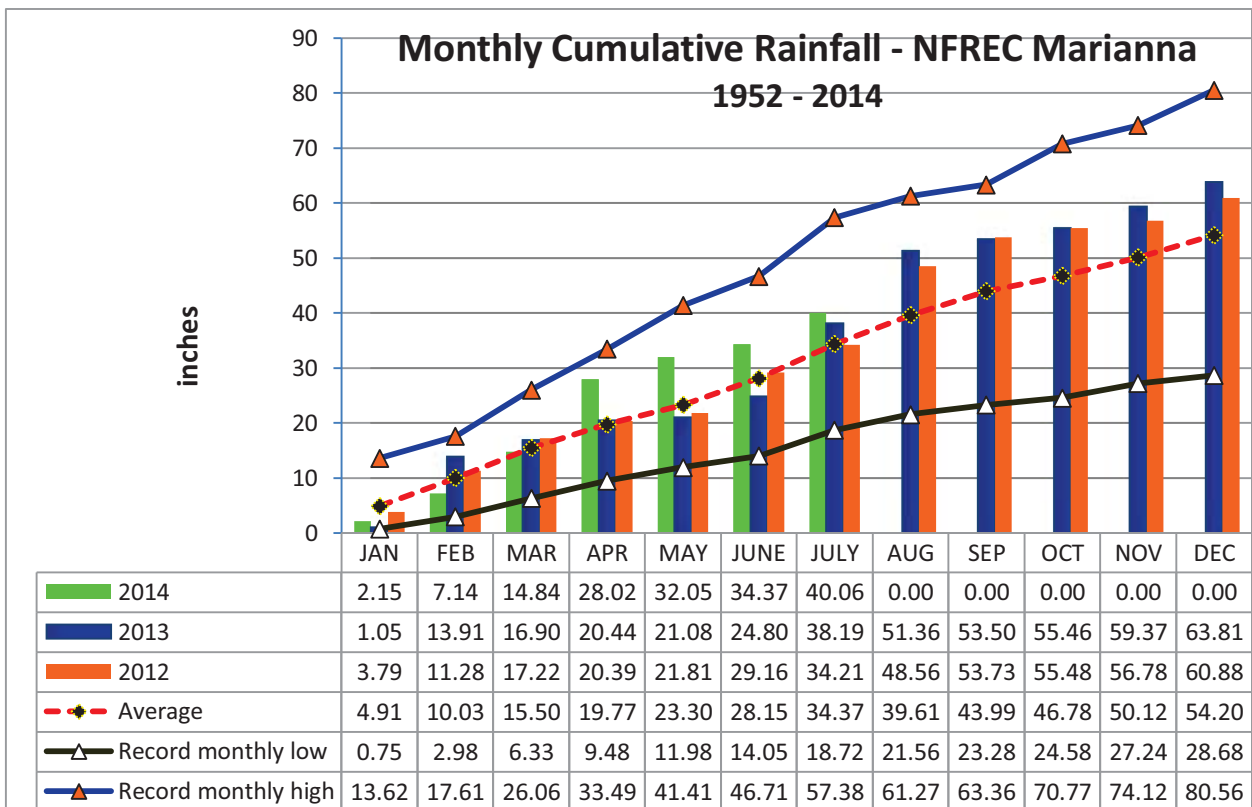
YEAR	JAN	FEB	MAR	APR	MAY	JUNE	JULY	AUG	SEP	OCT	NOV	DEC
1952	1.14	10.02	14.50	16.61	21.74	22.86	28.81	37.62	40.71	41.36	44.62	48.04
1953	4.84	12.10	15.13	23.56	25.99	29.96	36.80	38.43	44.76	45.41	49.50	64.81
1954	1.33	4.82	7.44	10.02	11.98	15.44	18.72	21.56	23.28	24.58	27.24	28.68
1955	3.66	5.49	6.33	12.13	15.16	16.78	23.53	27.28	29.72	31.82	32.54	33.31
1956	3.59	8.77	12.54	14.58	18.61	24.06	32.58	36.67	43.11	48.19	48.47	51.81
1957	0.75	3.40	8.57	14.31	18.91	24.66	34.49	40.40	57.24	58.55	64.79	67.01
1958	4.48	8.09	12.82	20.04	25.61	31.61	40.00	43.45	47.13	49.01	50.76	53.08
1959	3.67	10.73	19.23	24.96	31.91	35.68	40.51	44.18	47.25	55.18	55.39	56.92
1960	3.36	10.44	13.85	20.65	23.85	28.60	33.57	38.37	44.59	46.59	47.06	49.41
1961	4.23	8.38	12.02	17.59	21.56	25.97	29.96	41.05	43.65	43.65	46.49	52.72
1962	1.72	4.52	12.65	15.93	18.79	22.46	30.43	36.50	39.57	42.39	47.55	49.22
1963	7.31	10.33	13.51	14.87	18.37	26.36	31.52	33.02	38.27	38.28	42.50	48.55
1964	10.80	<u>17.61</u>	24.02	<u>33.49</u>	35.72	41.40	50.62	53.69	61.16	<u>70.77</u>	<u>74.12</u>	<u>80.56</u>
1965	2.63	8.72	14.23	18.19	18.37	27.97	31.23	35.41	39.89	43.30	45.11	48.71
1966	5.56	15.40	17.97	18.74	24.54	27.67	30.92	40.74	45.83	47.24	49.27	53.89
1967	8.27	11.59	13.78	13.91	16.52	23.54	30.03	33.61	35.01	36.87	39.27	47.25
1968	1.28	3.58	6.98	9.48	12.87	14.05	19.50	24.11	27.10	28.51	33.62	38.96
1969	1.68	5.17	12.25	16.79	19.80	21.51	34.69	37.74	43.38	44.88	46.10	49.90
1970	4.16	13.36	22.22	24.05	25.86	29.55	34.59	42.60	43.09	47.49	49.70	52.83
1971	1.97	8.08	15.23	18.40	21.43	25.28	30.48	37.24	39.71	41.55	43.49	47.19
1972	3.62	9.65	16.06	16.44	19.31	28.20	31.98	37.37	39.51	41.95	45.24	49.01
1973	8.14	15.85	24.23	31.83	38.70	42.33	53.45	57.96	<u>63.36</u>	63.63	67.27	72.60
1974	5.24	11.04	13.70	17.10	20.88	22.44	25.73	33.74	38.42	39.26	41.40	44.29
1975	10.21	16.57	21.48	31.83	35.80	39.90	53.61	59.01	62.82	67.17	70.06	73.34
1976	6.99	8.49	13.38	15.25	24.14	27.22	30.25	33.72	39.19	45.37	51.09	55.06
1977	3.47	5.28	11.80	12.68	13.28	19.64	23.19	28.41	38.24	40.83	48.97	53.16
1978	7.28	10.56	17.81	22.46	29.19	32.98	40.23	45.13	46.11	46.31	52.32	55.97
1979	7.30	15.08	18.34	26.09	32.31	33.62	41.11	47.41	58.92	59.45	63.92	66.76
1980	6.58	9.54	21.08	30.37	34.87	38.37	44.24	46.77	51.33	56.04	57.56	57.81
1981	1.70	7.02	12.96	15.99	18.72	23.46	27.48	30.01	32.45	34.20	35.05	39.99
1982	4.17	9.78	12.69	18.62	24.01	27.01	34.52	38.94	44.94	47.59	49.93	59.07
1983	4.92	11.76	20.29	28.17	30.44	36.10	37.29	39.82	48.79	52.31	58.21	65.86
1984	5.49	10.50	19.12	25.41	27.91	33.22	45.23	50.99	51.31	52.91	54.54	55.34
1985	4.60	9.06	11.66	12.84	17.28	22.96	26.64	32.22	33.64	41.06	48.97	54.31
1986	5.68	15.95	19.16	19.99	22.25	24.10	26.85	30.97	33.32	35.54	39.94	45.62
1987	8.62	14.14	21.37	21.77	26.23	31.66	37.17	41.35	43.62	43.68	47.70	48.51
1988	5.57	11.97	20.38	23.07	23.35	24.42	29.85	33.83	39.36	41.34	44.62	45.85
1989	1.59	4.33	9.29	12.92	19.93	32.83	44.02	47.08	50.44	57.64	62.35	67.80
1990	5.26	9.83	14.38	17.38	20.60	24.62	28.27	31.18	32.03	33.37	34.30	37.72
1991	<u>13.62</u>	17.06	<u>26.06</u>	31.38	<u>41.41</u>	<u>46.71</u>	<u>57.38</u>	<u>61.27</u>	62.80	63.97	65.57	68.57
1992	8.37	14.66	22.58	25.08	26.49	37.65	46.34	53.06	56.25	58.33	65.73	68.66
1993	12.00	15.38	22.79	24.29	25.89	30.07	36.75	40.64	44.08	46.98	49.25	52.88
1994	8.64	11.17	17.42	21.76	23.58	34.99	45.94	55.02	61.46	69.08	71.61	75.40
1995	5.23	8.36	12.65	17.00	20.90	26.46	29.48	35.64	36.50	44.01	48.13	49.91

YEAR	JAN	FEB	MAR	APR	MAY	JUNE	JULY	AUG	SEP	OCT	NOV	DEC
1996	3.64	9.63	18.10	23.86	25.36	30.79	33.62	47.90	53.22	57.03	59.04	62.69
1997	6.68	11.97	14.60	24.68	30.59	37.00	42.73	47.38	51.16	53.26	60.11	68.55
1998	6.28	14.58	20.69	22.93	24.38	26.73	31.10	33.30	49.61	49.91	51.96	53.94
1999	6.95	9.85	13.46	14.96	21.67	30.66	39.30	43.32	47.65	50.78	54.34	56.84
2000	3.78	8.74	13.22	17.27	17.36	21.36	24.76	31.91	39.11	39.82	44.25	47.46
2001	2.16	2.98	12.98	14.97	17.49	25.73	30.39	38.60	40.50	42.01	43.71	44.49
2002	3.82	6.26	11.77	17.55	19.74	23.19	33.53	36.83	48.66	56.02	63.78	69.77
2003	2.30	9.33	17.51	22.40	25.51	31.62	39.46	45.45	47.84	51.42	54.46	57.58
2004	3.19	10.85	11.75	16.12	17.31	23.97	28.89	30.56	40.57	44.46	49.43	52.68
2005	3.33	5.64	14.69	21.73	23.40	30.87	40.31	52.02	53.64	53.67	56.82	61.63
2006	4.82	8.72	9.63	11.24	16.21	18.20	20.42	25.60	26.51	29.60	33.01	38.44
2007	5.99	8.44	9.54	10.53	12.10	16.07	20.01	24.19	25.46	30.25	32.14	36.17
2008	4.26	13.26	22.37	26.65	28.11	36.75	40.77	50.06	50.80	55.91	59.09	67.32
2009	2.33	5.59	12.70	20.43	29.60	32.38	36.26	39.45	44.67	48.06	50.41	59.98
2010	7.53	11.52	14.93	18.94	24.03	26.95	29.26	30.10	31.43	31.65	37.47	38.10
2011	4.33	8.37	13.37	14.29	15.07	16.73	21.84	23.71	25.97	27.81	29.75	33.50
2012	3.79	11.28	17.22	20.39	21.81	29.16	34.21	48.56	53.73	55.48	56.78	60.88
2013	1.05	13.91	16.90	20.44	21.08	24.80	38.19	51.36	53.50	55.46	59.37	63.81
2014	2.15	7.14	14.84	28.02	32.05	34.37	40.06	0.00	0.00	0.00	0.00	0.00

2013 Deviation from the Average Accumulation												
Inches	-2.76	-2.89	-0.66	8.25	8.75	6.22	5.69					

Average Accumulation, 1952-2013												
Inches	4.91	10.03	15.50	19.77	23.30	28.15	34.37	39.61	43.99	46.78	50.12	54.20

Record High/Low Accumulation												
LOW	0.75	2.98	6.33	9.48	11.98	14.05	18.72	21.56	23.28	24.58	27.24	28.68
HIGH	13.62	17.61	26.06	33.49	41.41	46.71	57.38	61.27	63.36	70.77	74.12	80.56



2014 FL Panhandle FAWN Weather Station Summary

FAWN Station	Data	Jan	Feb	Mar	Apr	May	June	July	Total
Monticello	Rain	4.3	4.4	4.2	11.9	3.8	2.7	6.8	38.1
	Hist Avg	4.5	4.6	6.1	4.1	3.4	5.7	7.0	38.1
	Deviation	-0.2	-0.2	-1.9	7.8	0.4	-3.0	-0.2	2.7
Quincy	Rain	4.0	5.4	9.3	13.0	3.3	4.0	4.8	43.7
	Hist Avg	5.0	4.3	5.6	3.7	4.2	5.2	6.3	34.3
	Deviation	-1.0	1.1	3.7	9.3	-0.9	-1.3	-1.5	9.4
Carrabelle	Rain	6.1	6.7	6.7	7.1	2.3	7.7	3.9	40.5
	Hist Avg	3.8	3.7	4.9	3.0	2.7	5.3	7.3	30.7
	Deviation	2.3	3.0	1.8	4.1	-0.4	2.4	-3.4	9.8
Marianna	Rain	2.2	5.0	7.7	13.2	4.0	2.3	5.7	40.1
	Hist Avg	5.0	5.1	5.4	4.1	3.5	4.9	6.2	34.3
	Deviation	-2.8	-0.1	2.3	9.1	0.5	-2.6	-0.5	5.8
DeFuniak	Rain	3.3	5.2	7.7	19.1	8.4	5.7	9.7	59.1
Jay	Rain	3.4	5.1	7.6	16.7	10.3	5.3	8.7	57.0
	Hist Avg	5.5	5.3	6.6	4.8	4.8	5.8	7.0	39.8
	Deviation	-2.1	-0.2	1.0	11.9	5.5	-0.5	1.7	17.2
6 Station Average		3.9	5.3	7.2	13.5	5.4	4.6	6.6	46.4