



Jackson County 2017 Weather Data

66 Years of Weather Data Recorded at the UF/IFAS Marianna North Florida Research and Education Center



Doug Mayo
Jackson County Extension Director

1952-2008 Rainfall Data compiled by
Ed Jowers, Emeritus County Extension Director

Data provided by Florida Automated Weather Station (FAWN)
UF/IFAS North Florida Research and Education Center
Greenwood, Florida



<http://fawn.ifas.ufl.edu/station.php?id=130>

Tower Name	Tower Number	Latitude Degree, Minutes	Latitude Degrees Minutes, Seconds	Latitude Degrees Decimal	Longitude Degree, Minutes	Longitude Degrees Minutes, Seconds	Longitude Degrees Decimal	Elevation Feet
Marianna	130.00	N 30°51.000'	N 30°50'00.00"	N 30.85000°	-85°09.910'	-85°09'54.60"	-85.16516°	115'

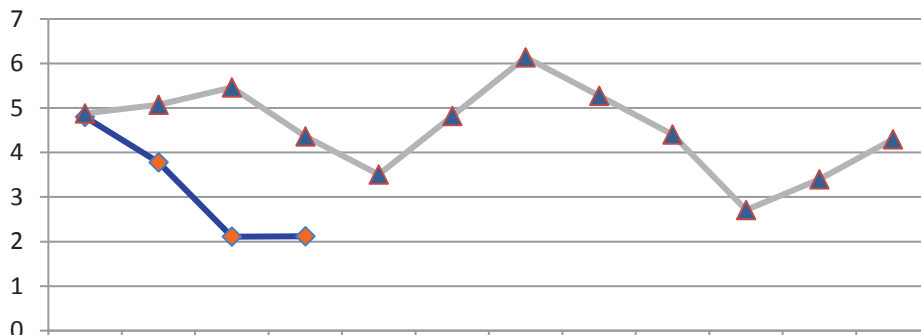
2017 UF/IFAS FAWN Marianna Weather Summary

Month	6' Air Temp			Soil Temp			Rainfall Inches	Dev from 64 yr Avg
	High	Low	Avg	High	Low	Avg		
January	70	27	48	65	39	52	4.8	-0.1
February	83	35	61	78	54	65	3.8	-1.3
March	88	29	62	86	50	68	2.1	-3.3
April	90	42	70	91	60	77	2.1	-2.2
2017	90	27	60	91	39	65	12.8	-7.0

Data: UF/IFAS Florida Automated Weather Network Marianna Station

Total days in 2017 <32° 8 Total days in 2017 >95° 0

Monthly Rainfall @ Marianna FAWN



	JAN	FEB	MAR	APR	MAY	JUNE	JULY	AUG	SEP	OCT	NOV	DEC
2017	4.8	3.78	2.11	2.12								
65 yr avg	4.88	5.08	5.46	4.36	3.50	4.82	6.14	5.28	4.40	2.71	3.40	4.30

◆ 2017 ▲ 65 yr avg

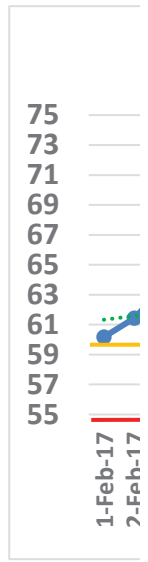
January Daily Weather Data

Temperature							Precipitation			
Date	Air Temp 6 ft			Soil Temp 4 inch			Rain	Evapo Trans		
	Avg	Min	Max	Avg	Min	Max	Inches	Inches		
1-Jan-16	52	47	57	61	56	64	0.13	0.04		
2-Jan-16	47	43	50	55	53	58	0.00	0.04		
3-Jan-16	47	43	52	54	52	58	0.00	0.04		
4-Jan-16	47	39	57	53	48	59	0.00	0.04		
5-Jan-16	40	33	49	49	45	56	0.00	0.03		
6-Jan-16	44	36	54	50	45	59	0.00	0.04		
7-Jan-16	51	42	62	54	48	60	0.82	0.05		
8-Jan-16	56	51	59	57	54	60	0.22	0.04		
9-Jan-16	59	55	63	59	57	60	0.48	0.04		
10-Jan-16	48	37	62	54	47	60	0.00	0.06		
11-Jan-16	38	30	50	49	43	57	0.00	0.03		
12-Jan-16	42	29	58	48	43	56	0.00	0.04		
13-Jan-16	45	33	60	49	43	58	0.00	0.04		
14-Jan-16	44	32	55	48	44	52	0.00	0.04		
15-Jan-16	56	47	66	55	50	62	1.55	0.05		
16-Jan-16	56	50	66	57	53	65	0.00	0.05		
17-Jan-16	49	41	56	53	48	59	0.55	0.04		
18-Jan-16	43	33	53	49	44	57	0.00	0.04		
19-Jan-16	38	30	50	47	42	55	0.00	0.04		
20-Jan-16	46	29	63	49	41	57	0.00	0.05		
21-Jan-16	55	49	59	53	49	57	0.09	0.05		
22-Jan-16	52	36	61	55	48	61	0.57	0.06		
23-Jan-16	37	32	42	46	42	50	0.00	0.04		
24-Jan-16	38	27	55	46	39	55	0.00	0.04		
25-Jan-16	47	29	65	49	41	59	0.00	0.06		
26-Jan-16	56	42	69	53	47	59	0.00	0.06		
27-Jan-16	56	51	60	56	54	59	0.04	0.05		
28-Jan-16	48	40	51	53	49	55	0.35	0.04		
29-Jan-16	49	37	65	51	45	60	0.00	0.06		
30-Jan-16	53	37	70	53	46	63	0.00	0.07		
31-Jan-16	58	49	69	56	52	62	0.00	0.06		
High			70			65				
Low		27			39					
Average	48	39	58	52	47	59				
Days over 95 ^o	0			Total for Month			4.80	1.43	4.8	1.4
				Number of Rain Days			10.00			10.0
Days below 32 ^o	7			Historic Average			4.9			
				Deviation from Average			-0.1			
				Net Gain/loss (Rain - ET)			3.37			3.4

Year Cumulative	
Rain	ET
4.8	1.4
10.0	
4.9	
-0.1	
	3.4

February Daily Weather Data

Date	Temperature						Precipitation	
	Air Temp 6 ft			Soil Temp 4 inch			Rain	Evapo Trans
	Avg	Min	Max	Avg	Min	Max	Inches	Inches
1-Feb-17	59	47	73	60	55	66	0.00	0.07
2-Feb-17	60	46	75	61	56	68	0.00	0.08
3-Feb-17	59	48	69	64	61	68	0.00	0.07
4-Feb-17	48	37	60	60	55	66	0.00	0.06
5-Feb-17	53	39	69	60	54	67	0.00	0.07
6-Feb-17	62	49	77	64	59	71	0.00	0.08
7-Feb-17	62	51	77	64	61	69	1.83	0.08
8-Feb-17	67	58	74	65	62	69	0.04	0.07
9-Feb-17	59	46	70	64	59	68	0.00	0.09
10-Feb-17	52	38	67	60	54	67	0.00	0.08
11-Feb-17	60	41	77	61	54	69	0.00	0.09
12-Feb-17	70	62	80	67	63	72	0.00	0.09
13-Feb-17	63	48	74	67	64	73	0.00	0.09
14-Feb-17	61	44	78	65	59	73	0.00	0.09
15-Feb-17	62	49	74	67	63	72	0.00	0.09
16-Feb-17	50	40	64	63	58	69	0.00	0.08
17-Feb-17	54	35	71	62	55	69	0.00	0.08
18-Feb-17	60	53	70	64	61	69	0.11	0.08
19-Feb-17	64	55	77	67	63	75	0.00	0.1
20-Feb-17	65	50	80	68	61	75	0.00	0.1
21-Feb-17	62	56	72	66	64	68	1.21	0.06
22-Feb-17	63	59	71	66	63	71	0.59	0.07
23-Feb-17	66	57	77	68	63	76	0.00	0.1
24-Feb-17	67	54	83	70	63	78	0.00	0.11
25-Feb-17	66	53	75	70	65	75	0.00	0.1
26-Feb-17	54	39	68	65	59	73	0.00	0.09
27-Feb-17	62	48	75	65	59	70	0.00	0.09
28-Feb-17	68	52	82	68	62	75	0.00	0.11
High			83			78		
Low		35			54			
Average	61	48	74	65	60	71		
Days over 95 ^u			0		Total for Month		3.78	2.37
					Number of Rain Days		5.00	
Days below 32 ^u			0		Historic Average		5.08	
					Deviation from Average		-1.30	
					Net Gain/loss (Rain - ET)			1.41



Year Cumulative	
Rain	ET
8.6	3.8
15.0	
10.0	
-1.4	
	4.8

March Daily Weather Data

Date	Temperature						Precipitation		
	Air Temp 6 ft			Soil Temp 4 inch			Rain	Evapo Trans	
	Avg	Min	Max	Avg	Min	Max	Inches	Inches	
1-Mar-17	72	63	81	71	67	75	0.00	0.1	
2-Mar-17	59	49	72	68	62	72	0.18	0.1	
3-Mar-17	54	39	67	63	56	71	0.00	0.09	
4-Mar-17	52	35	67	63	56	71	0.00	0.09	
5-Mar-17	58	43	72	63	57	70	0.00	0.09	
6-Mar-17	64	54	75	67	62	73	0.00	0.11	
7-Mar-17	66	55	77	67	62	73	0.03	0.1	
8-Mar-17	64	53	74	69	65	76	0.08	0.1	
9-Mar-17	63	45	80	69	61	77	0.00	0.11	
10-Mar-17	66	53	78	70	66	76	0.01	0.11	
11-Mar-17	60	49	75	69	62	76	0.00	0.1	
12-Mar-17	54	48	63	67	64	72	0.00	0.07	
13-Mar-17	47	45	48	62	58	65	0.41	0.04	
14-Mar-17	49	44	56	58	55	62	0.00	0.07	
15-Mar-17	42	34	52	57	50	65	0.00	0.08	
16-Mar-17	44	29	59	58	50	67	0.00	0.08	
17-Mar-17	54	36	72	62	53	72	0.00	0.1	
18-Mar-17	62	43	78	65	58	73	0.00	0.11	
19-Mar-17	62	47	76	67	61	74	0.00	0.12	
20-Mar-17	63	43	81	68	60	78	0.00	0.12	
21-Mar-17	69	53	85	71	65	80	0.00	0.13	
22-Mar-17	73	61	88	74	68	82	0.00	0.14	
23-Mar-17	66	60	74	72	69	75	0.00	0.08	
24-Mar-17	67	57	79	72	67	80	0.00	0.12	
25-Mar-17	69	59	80	73	68	80	0.00	0.12	
26-Mar-17	69	62	81	74	70	80	0.56	0.11	
27-Mar-17	69	58	82	73	66	81	0.00	0.13	
28-Mar-17	72	64	82	75	69	82	0.00	0.13	
29-Mar-17	72	63	85	77	72	86	0.00	0.13	
30-Mar-17	69	54	83	75	69	81	0.31	0.12	
31-Mar-17	70	59	79	75	70	82	0.53	0.14	
High			88			86			
Low		29			50				
Average	62	50	74	68	62	75			
Days over 95 ^o			0	Total for Month		2.11	3.24	10.7	7.0
				Number of Rain Days		8.00		23.0	
				Historic Average		5.46		15.4	
Days below 32 ^o		1		Deviation from Average		-3.35		-4.7	
				Net Gain/loss (Rain - ET)			-1.13		3.7

Year Cumulative	
Rain	ET
10.7	7.0
23.0	
15.4	
-4.7	
	3.7

MILLER COUNTY

April Daily Weather Data

Temperature							Precipitation					
Date	Air Temp 6 ft			Soil Temp 4 inch			Rain	Evapo Trans				
	Avg	Min	Max	Avg	Min	Max	Inches	Inches				
1-Apr-17	68	54	84	74	66	83	0.00	0.14				
2-Apr-17	71	56	87	76	68	85	0.00	0.15				
3-Apr-17	68	60	82	72	69	77	1.02	0.08				
4-Apr-17	72	63	82	75	69	83	0.03	0.15				
5-Apr-17	73	65	80	74	72	76	1.03	0.07				
6-Apr-17	61	52	70	69	64	75	0.00	0.14				
7-Apr-17	57	46	68	67	60	75	0.00	0.13				
8-Apr-17	58	42	72	68	60	79	0.00	0.12				
9-Apr-17	62	44	79	71	62	81	0.00	0.14				
10-Apr-17	67	51	82	73	65	83	0.00	0.15				
11-Apr-17	69	55	83	75	68	83	0.00	0.14				
12-Apr-17	69	58	82	75	70	81	0.00	0.13				
13-Apr-17	69	55	83	76	69	85	0.00	0.15				
14-Apr-17	70	56	82	77	70	85	0.00	0.15				
15-Apr-17	71	60	82	77	71	83	0.00	0.15				
16-Apr-17	71	59	83	78	71	86	0.00	0.15				
17-Apr-17	72	59	84	79	73	88	0.00	0.14				
18-Apr-17	73	60	86	80	74	89	0.00	0.16				
19-Apr-17	75	63	87	82	75	91	0.00	0.17				
20-Apr-17	74	61	87	82	75	90	0.00	0.15				
21-Apr-17	73	60	86	82	75	91	0.00	0.15				
22-Apr-17	72	61	85	82	76	89	0.00	0.15				
23-Apr-17	68	58	79	78	74	82	0.04	0.1				
24-Apr-17	60	54	68	73	70	76	0.00	0.09				
25-Apr-17	67	53	80	76	68	86	0.00	0.15				
26-Apr-17	71	55	82	79	71	88	0.00	0.16				
27-Apr-17	76	70	82	79	77	81	0.00	0.09				
28-Apr-17	79	69	90	82	76	89	0.00	0.16				
29-Apr-17	77	67	87	82	78	88	0.00	0.15				
30-Apr-17	77	68	88	83	77	89	0.00	0.16				
High			90			91						
Low		42			60							
Average	70	58	82	77	70	84						
Days over 95 ^o	0			Total for Month			2.12	4.12	12.8	11.2		
				Number of Rain Days			4.00			27.0		
Days below 32 ^o	0			Historic Average			4.36			19.8		
				Deviation from Average			-2.24			-7.0		
				Net Gain/loss (Rain - ET)						-2		

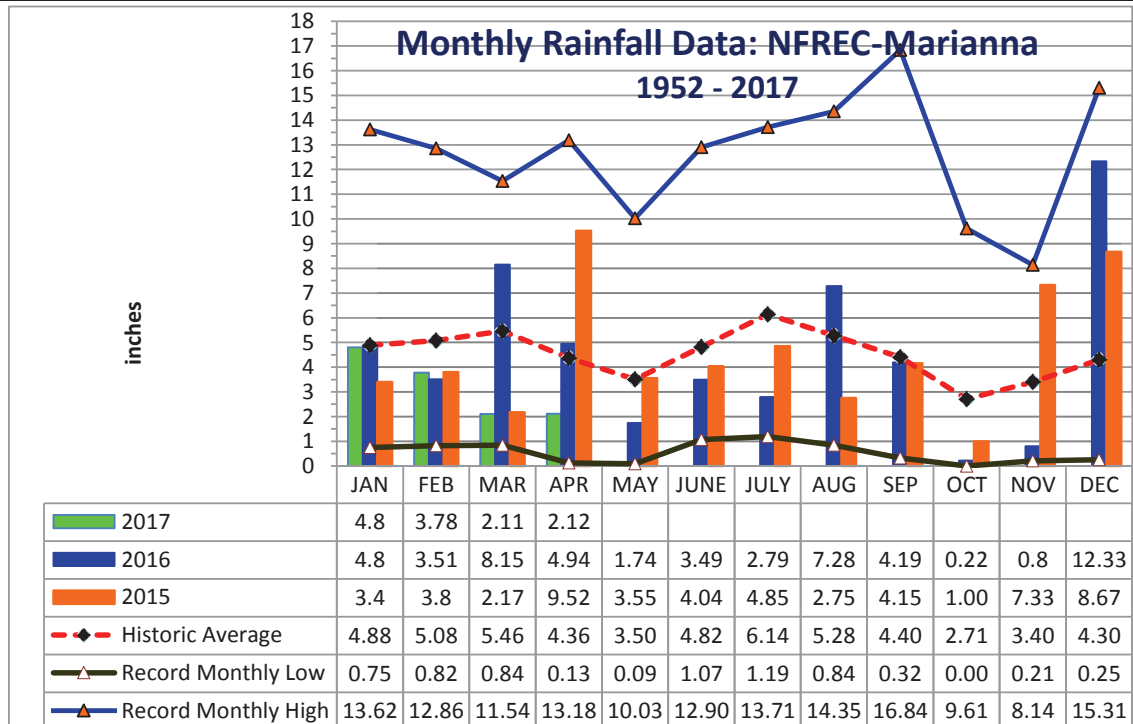
Year Cumulative	
Rain	ET
12.8	11.2
27.0	
19.8	
-7.0	
	1.7



YEAR	JAN	FEB	MAR	APR	MAY	JUNE	JULY	AUG	SEP	OCT	NOV	DEC	TOTAL
1952	1.14	8.88	4.48	2.11	5.13	1.12	5.95	8.81	3.09	0.65	3.26	3.42	48.04
1953	4.84	7.26	3.03	8.43	2.43	3.97	6.84	1.63	6.33	0.65	4.09	15.31	64.81
1954	1.33	3.49	2.62	2.58	1.96	3.46	3.28	2.84	1.72	1.30	2.66	1.44	28.68
1955	3.66	1.83	0.84	5.80	3.03	1.62	6.75	3.75	2.44	2.10	0.72	0.77	33.31
1956	3.59	5.18	3.77	2.04	4.03	5.45	8.52	4.09	6.44	5.08	0.28	3.34	51.81
1957	0.75	2.65	5.17	5.74	4.60	5.75	9.83	5.91	16.84	1.31	6.24	2.22	67.01
1958	4.48	3.61	4.73	7.22	5.57	6.00	8.39	3.45	3.68	1.88	1.75	2.32	53.08
1959	3.67	7.06	8.50	5.73	6.95	3.77	4.83	3.67	3.07	7.93	0.21	1.53	56.92
1960	3.36	7.08	3.41	6.80	3.20	4.75	4.97	4.80	6.22	2.00	0.47	2.35	49.41
1961	4.23	4.15	3.64	5.57	3.97	4.41	3.99	11.09	2.60	0.00	2.84	6.23	52.72
1962	1.72	2.80	8.13	3.28	2.86	3.67	7.97	6.07	3.07	2.82	5.16	1.67	49.22
1963	7.31	3.02	3.18	1.36	3.50	7.99	5.16	1.50	5.25	0.01	4.22	6.05	48.55
1964	10.80	6.81	6.41	9.47	2.23	5.68	9.22	3.07	7.47	9.61	3.35	6.44	80.56
1965	2.63	6.09	5.51	3.96	0.18	9.60	3.26	4.18	4.48	3.41	1.81	3.60	48.71
1966	5.56	9.84	2.57	0.77	5.80	3.13	3.25	9.82	5.09	1.41	2.03	4.62	53.89
1967	8.27	3.32	2.19	0.13	2.61	7.02	6.49	3.58	1.40	1.86	2.40	7.98	47.25
1968	1.28	2.30	3.40	2.50	3.39	1.18	5.45	4.61	2.99	1.41	5.11	5.34	38.96
1969	1.68	3.49	7.08	4.54	3.01	1.71	13.18	3.05	5.64	1.50	1.22	3.80	49.90
1970	4.16	9.20	8.86	1.83	1.81	3.69	5.04	8.01	0.49	4.40	2.21	3.13	52.83
1971	1.97	6.11	7.15	3.17	3.03	3.85	5.20	6.76	2.47	1.84	1.94	3.70	47.19
1972	3.62	6.03	6.41	0.38	2.87	8.89	3.78	5.39	2.14	2.44	3.29	3.77	49.01
1973	8.14	7.71	8.38	7.60	6.87	3.63	11.12	4.51	5.40	0.27	3.64	5.33	72.60
1974	5.24	5.80	2.66	3.40	3.78	1.56	3.29	8.01	4.68	0.84	2.14	2.89	44.29
1975	10.21	6.36	4.91	10.35	3.97	4.10	13.71	5.40	3.81	4.35	2.89	3.28	73.34
1976	6.99	1.50	4.89	1.87	8.89	3.08	3.03	3.47	5.47	6.18	5.72	3.97	55.06
1977	3.47	1.81	6.52	0.88	0.60	6.36	3.55	5.22	9.83	2.59	8.14	4.19	53.16
1978	7.28	3.28	7.25	4.65	6.73	3.79	7.25	4.90	0.98	0.20	6.01	3.65	55.97
1979	7.30	7.78	3.26	7.75	6.22	1.31	7.49	6.30	11.51	0.53	4.47	2.84	66.76
1980	6.58	2.96	11.54	9.29	4.50	3.50	5.87	2.53	4.56	4.71	1.52	0.25	57.81
1981	1.70	5.32	5.94	3.03	2.73	4.74	4.02	2.53	2.44	1.75	0.85	4.94	39.99
1982	4.17	5.61	2.91	5.93	5.39	3.00	7.51	4.42	6.00	2.65	2.34	9.14	59.07
1983	4.92	6.84	8.53	7.88	2.27	5.66	1.19	2.53	8.97	3.52	5.90	7.65	65.86
1984	5.49	5.01	8.62	6.29	2.50	5.31	12.01	5.76	0.32	1.60	1.63	0.80	55.34
1985	4.60	4.46	2.60	1.18	4.44	5.68	3.68	5.58	1.42	7.42	7.91	5.34	54.31
1986	5.68	10.27	3.21	0.83	2.26	1.85	2.75	4.12	2.35	2.22	4.40	5.68	45.62
1987	8.62	5.52	7.23	0.40	4.46	5.43	5.51	4.18	2.27	0.06	4.02	0.81	48.51
1988	5.57	6.40	8.41	2.69	0.28	1.07	5.43	3.98	5.53	1.98	3.28	1.23	45.85
1989	1.59	2.74	4.96	3.63	7.01	12.90	11.19	3.06	3.36	7.20	4.71	5.45	67.80
1990	5.26	4.57	4.55	3.00	3.22	4.02	3.65	2.91	0.85	1.34	0.93	3.42	37.72
1991	13.62	3.44	9.00	5.32	10.03	5.30	10.67	3.89	1.53	1.17	1.60	3.00	68.57
1992	8.37	6.29	7.92	2.50	1.41	11.16	8.69	6.72	3.19	2.08	7.40	2.93	68.66
1993	12.00	3.38	7.41	1.50	1.60	4.18	6.68	3.89	3.44	2.90	2.27	3.63	52.88
1994	8.64	2.53	6.25	4.34	1.82	11.41	10.95	9.08	6.44	7.62	2.53	3.79	75.40
1995	5.23	3.13	4.29	4.35	3.90	5.56	3.02	6.16	0.86	7.51	4.12	1.78	49.91
1996	3.64	5.99	8.47	5.76	1.50	5.43	2.83	14.28	5.32	3.81	2.01	3.65	62.69

YEAR	JAN	FEB	MAR	APR	MAY	JUNE	JULY	AUG	SEP	OCT	NOV	DEC	TOTAL
1997	6.68	5.29	2.63	10.08	5.91	6.41	5.73	4.65	3.78	2.10	6.85	8.44	68.55
1998	6.28	8.30	6.11	2.24	1.45	2.35	4.37	2.20	16.31	0.30	2.05	1.98	53.94
1999	6.95	2.90	3.61	1.50	6.71	8.99	8.64	4.02	4.33	3.13	3.56	2.50	56.84
2000	3.78	4.96	4.48	4.05	0.09	4.00	3.40	7.15	7.20	0.71	4.43	3.21	47.46
2001	2.16	0.82	10.00	1.99	2.52	8.24	4.66	8.21	1.90	1.51	1.70	0.78	44.49
2002	3.82	2.44	5.51	5.78	2.19	3.45	10.34	3.30	11.83	7.36	7.76	5.99	69.77
2003	2.30	7.03	8.18	4.89	3.11	6.11	7.84	5.99	2.39	3.58	3.04	3.12	57.58
2004	3.19	7.66	0.90	4.37	1.19	6.66	4.92	1.67	10.01	3.89	4.97	3.25	52.68
2005	3.33	2.31	9.05	7.04	1.67	7.47	9.44	11.71	1.62	0.03	3.15	4.81	61.63
2006	4.82	3.90	0.91	1.61	4.97	1.99	2.22	5.18	0.91	3.09	3.41	5.43	38.44
2007	5.99	2.45	1.10	0.99	1.57	3.97	3.94	4.18	1.27	4.79	1.89	4.03	36.17
2008	4.26	9.00	9.11	4.28	1.46	8.64	4.02	9.29	0.74	5.11	3.18	8.23	67.32
2009	2.33	3.26	7.11	7.73	9.17	2.78	3.88	3.19	5.22	3.39	2.35	9.57	59.98
2010	7.53	3.99	3.41	4.01	5.09	2.92	2.31	0.84	1.33	0.22	5.82	0.63	38.10
2011	4.33	4.04	5.00	0.92	0.78	1.66	5.11	1.87	2.26	1.84	1.94	3.75	33.50
2012	3.79	7.49	5.94	3.17	1.42	7.35	5.05	14.35	5.17	1.75	1.30	4.10	60.88
2013	1.05	12.86	2.99	3.54	0.64	3.72	13.39	13.17	2.14	1.96	3.91	4.44	63.81
2014	2.15	4.99	7.70	13.18	4.03	2.32	5.69	2.55	6.03	2.03	5.93	5.32	61.92
2015	3.4	3.8	2.17	9.52	3.55	4.04	4.85	2.75	4.15	1.00	7.33	8.67	55.23
2016	4.8	3.51	8.15	4.94	1.74	3.49	2.79	7.28	4.19	0.22	0.8	12.33	54.24
2017	4.8	3.78	2.11	2.12									12.81

Deviation from the Average Monthly Rainfall													
Inches	-0.08	-1.30	-3.35	-2.24	-3.50	-4.82	-6.14	-5.28	-4.40	-2.71	-3.40	-4.30	-41.52
Monthly Average Rainfall, 1952-2016													
AVG.	4.88	5.08	5.46	4.36	3.50	4.82	6.14	5.28	4.40	2.71	3.40	4.30	54.33
% of Annual Rainfall Occuring each Month													
	9.1%	9.5%	10.2%	8.1%	6.5%	9.0%	11.4%	9.8%	8.2%	5.0%	6.3%	8.0%	
Record High/Low for the Month													
LOW	0.75	0.82	0.84	0.13	0.09	1.07	1.19	0.84	0.32	0.00	0.21	0.25	28.68
HIGH	13.62	12.86	11.54	13.18	10.03	12.90	13.71	14.35	16.84	9.61	8.14	15.31	80.56



Jackson County Monthly Cumulative Rainfall, 1952 -2017

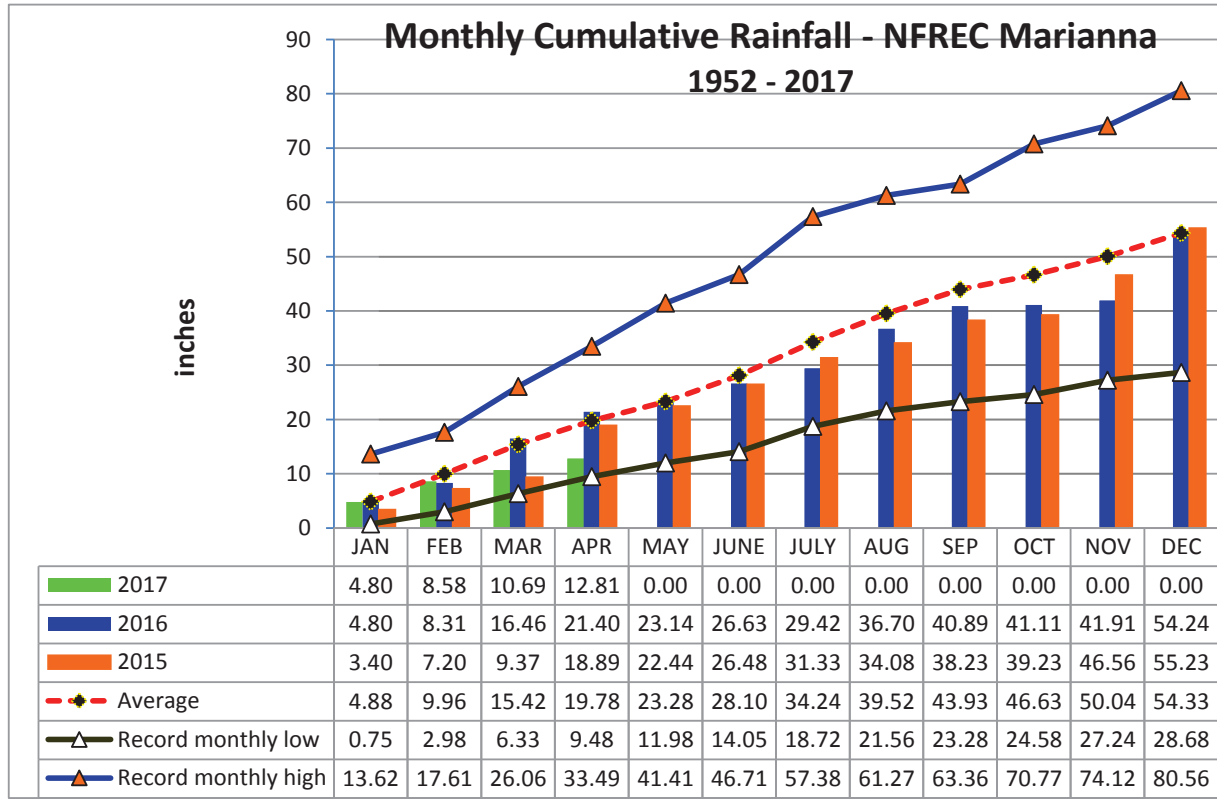
North Florida Research & Education Center Marianna, FL



YEAR	JAN	FEB	MAR	APR	MAY	JUNE	JULY	AUG	SEP	OCT	NOV	DEC
1952	1.14	10.02	14.50	16.61	21.74	22.86	28.81	37.62	40.71	41.36	44.62	48.04
1953	4.84	12.10	15.13	23.56	25.99	29.96	36.80	38.43	44.76	45.41	49.50	64.81
1954	1.33	4.82	7.44	10.02	11.98	15.44	18.72	21.56	23.28	24.58	27.24	28.68
1955	3.66	5.49	6.33	12.13	15.16	16.78	23.53	27.28	29.72	31.82	32.54	33.31
1956	3.59	8.77	12.54	14.58	18.61	24.06	32.58	36.67	43.11	48.19	48.47	51.81
1957	0.75	3.40	8.57	14.31	18.91	24.66	34.49	40.40	57.24	58.55	64.79	67.01
1958	4.48	8.09	12.82	20.04	25.61	31.61	40.00	43.45	47.13	49.01	50.76	53.08
1959	3.67	10.73	19.23	24.96	31.91	35.68	40.51	44.18	47.25	55.18	55.39	56.92
1960	3.36	10.44	13.85	20.65	23.85	28.60	33.57	38.37	44.59	46.59	47.06	49.41
1961	4.23	8.38	12.02	17.59	21.56	25.97	29.96	41.05	43.65	43.65	46.49	52.72
1962	1.72	4.52	12.65	15.93	18.79	22.46	30.43	36.50	39.57	42.39	47.55	49.22
1963	7.31	10.33	13.51	14.87	18.37	26.36	31.52	33.02	38.27	38.28	42.50	48.55
1964	10.80	17.61	24.02	33.49	35.72	41.40	50.62	53.69	61.16	70.77	74.12	80.56
1965	2.63	8.72	14.23	18.19	18.37	27.97	31.23	35.41	39.89	43.30	45.11	48.71
1966	5.56	15.40	17.97	18.74	24.54	27.67	30.92	40.74	45.83	47.24	49.27	53.89
1967	8.27	11.59	13.78	13.91	16.52	23.54	30.03	33.61	35.01	36.87	39.27	47.25
1968	1.28	3.58	6.98	9.48	12.87	14.05	19.50	24.11	27.10	28.51	33.62	38.96
1969	1.68	5.17	12.25	16.79	19.80	21.51	34.69	37.74	43.38	44.88	46.10	49.90
1970	4.16	13.36	22.22	24.05	25.86	29.55	34.59	42.60	43.09	47.49	49.70	52.83
1971	1.97	8.08	15.23	18.40	21.43	25.28	30.48	37.24	39.71	41.55	43.49	47.19
1972	3.62	9.65	16.06	16.44	19.31	28.20	31.98	37.37	39.51	41.95	45.24	49.01
1973	8.14	15.85	24.23	31.83	38.70	42.33	53.45	57.96	63.36	63.63	67.27	72.60
1974	5.24	11.04	13.70	17.10	20.88	22.44	25.73	33.74	38.42	39.26	41.40	44.29
1975	10.21	16.57	21.48	31.83	35.80	39.90	53.61	59.01	62.82	67.17	70.06	73.34
1976	6.99	8.49	13.38	15.25	24.14	27.22	30.25	33.72	39.19	45.37	51.09	55.06
1977	3.47	5.28	11.80	12.68	13.28	19.64	23.19	28.41	38.24	40.83	48.97	53.16
1978	7.28	10.56	17.81	22.46	29.19	32.98	40.23	45.13	46.11	46.31	52.32	55.97
1979	7.30	15.08	18.34	26.09	32.31	33.62	41.11	47.41	58.92	59.45	63.92	66.76
1980	6.58	9.54	21.08	30.37	34.87	38.37	44.24	46.77	51.33	56.04	57.56	57.81
1981	1.70	7.02	12.96	15.99	18.72	23.46	27.48	30.01	32.45	34.20	35.05	39.99
1982	4.17	9.78	12.69	18.62	24.01	27.01	34.52	38.94	44.94	47.59	49.93	59.07
1983	4.92	11.76	20.29	28.17	30.44	36.10	37.29	39.82	48.79	52.31	58.21	65.86
1984	5.49	10.50	19.12	25.41	27.91	33.22	45.23	50.99	51.31	52.91	54.54	55.34
1985	4.60	9.06	11.66	12.84	17.28	22.96	26.64	32.22	33.64	41.06	48.97	54.31
1986	5.68	15.95	19.16	19.99	22.25	24.10	26.85	30.97	33.32	35.54	39.94	45.62
1987	8.62	14.14	21.37	21.77	26.23	31.66	37.17	41.35	43.62	43.68	47.70	48.51
1988	5.57	11.97	20.38	23.07	23.35	24.42	29.85	33.83	39.36	41.34	44.62	45.85
1989	1.59	4.33	9.29	12.92	19.93	32.83	44.02	47.08	50.44	57.64	62.35	67.80
1990	5.26	9.83	14.38	17.38	20.60	24.62	28.27	31.18	32.03	33.37	34.30	37.72
1991	13.62	17.06	26.06	31.38	41.41	46.71	57.38	61.27	62.80	63.97	65.57	68.57
1992	8.37	14.66	22.58	25.08	26.49	37.65	46.34	53.06	56.25	58.33	65.73	68.66
1993	12.00	15.38	22.79	24.29	25.89	30.07	36.75	40.64	44.08	46.98	49.25	52.88
1994	8.64	11.17	17.42	21.76	23.58	34.99	45.94	55.02	61.46	69.08	71.61	75.40
1995	5.23	8.36	12.65	17.00	20.90	26.46	29.48	35.64	36.50	44.01	48.13	49.91
1996	3.64	9.63	18.10	23.86	25.36	30.79	33.62	47.90	53.22	57.03	59.04	62.69

YEAR	JAN	FEB	MAR	APR	MAY	JUNE	JULY	AUG	SEP	OCT	NOV	DEC
1997	6.68	11.97	14.60	24.68	30.59	37.00	42.73	47.38	51.16	53.26	60.11	68.55
1998	6.28	14.58	20.69	22.93	24.38	26.73	31.10	33.30	49.61	49.91	51.96	53.94
1999	6.95	9.85	13.46	14.96	21.67	30.66	39.30	43.32	47.65	50.78	54.34	56.84
2000	3.78	8.74	13.22	17.27	17.36	21.36	24.76	31.91	39.11	39.82	44.25	47.46
2001	2.16	2.98	12.98	14.97	17.49	25.73	30.39	38.60	40.50	42.01	43.71	44.49
2002	3.82	6.26	11.77	17.55	19.74	23.19	33.53	36.83	48.66	56.02	63.78	69.77
2003	2.30	9.33	17.51	22.40	25.51	31.62	39.46	45.45	47.84	51.42	54.46	57.58
2004	3.19	10.85	11.75	16.12	17.31	23.97	28.89	30.56	40.57	44.46	49.43	52.68
2005	3.33	5.64	14.69	21.73	23.40	30.87	40.31	52.02	53.64	53.67	56.82	61.63
2006	4.82	8.72	9.63	11.24	16.21	18.20	20.42	25.60	26.51	29.60	33.01	38.44
2007	5.99	8.44	9.54	10.53	12.10	16.07	20.01	24.19	25.46	30.25	32.14	36.17
2008	4.26	13.26	22.37	26.65	28.11	36.75	40.77	50.06	50.80	55.91	59.09	67.32
2009	2.33	5.59	12.70	20.43	29.60	32.38	36.26	39.45	44.67	48.06	50.41	59.98
2010	7.53	11.52	14.93	18.94	24.03	26.95	29.26	30.10	31.43	31.65	37.47	38.10
2011	4.33	8.37	13.37	14.29	15.07	16.73	21.84	23.71	25.97	27.81	29.75	33.50
2012	3.79	11.28	17.22	20.39	21.81	29.16	34.21	48.56	53.73	55.48	56.78	60.88
2013	1.05	13.91	16.90	20.44	21.08	24.80	38.19	51.36	53.50	55.46	59.37	63.81
2014	2.15	7.14	14.84	28.02	32.05	34.37	40.06	42.61	48.64	50.67	56.60	61.92
2015	3.40	7.20	9.37	18.89	22.44	26.48	31.33	34.08	38.23	39.23	46.56	55.23
2016	4.80	8.31	16.46	21.40	23.14	26.63	29.42	36.70	40.89	41.11	41.91	54.24
2017	4.80	8.58	10.69	12.81								

Deviation from the Average Accumulation												
Inches	-0.08	-1.38	-4.73	-6.97	#VALUE!	#VALUE!	#VALUE!	#VALUE!	#VALUE!	#VALUE!	#VALUE!	#VALUE!
Average Accumulation, 1952-2016												
Inches	4.88	9.96	15.42	19.78	23.28	28.10	34.24	39.52	43.93	46.63	50.04	54.33
Record High/Low Accumulation												
LOW	0.75	2.98	6.33	9.48	11.98	14.05	18.72	21.56	23.28	24.58	27.24	28.68
HIGH	13.62	17.61	26.06	33.49	41.41	46.71	57.38	61.27	63.36	70.77	74.12	80.56



2017 UF/IFAS FAWN Panhandle Weather Station Summary

FAWN Station	Data	Jan	Feb	Mar	Apr	Total
Monticello	Rain	4.5	1.6	1.2	2.5	9.7
	Hist Avg	4.5	4.6	6.1	4.1	19.3
	Deviation	0.0	-3.1	-5.0	-1.6	-9.6
Quincy	Rain	5.9	2.9	1.2	3.4	13.5
	Hist Avg	5.0	4.3	5.6	3.7	18.6
	Deviation	0.9	-1.4	-4.4	-0.3	-5.1
Carrabelle	Rain	4.2	3.9	1.7	0.6	10.3
	Hist Avg	3.8	3.7	4.9	3.0	15.4
	Deviation	0.4	0.2	-3.2	-2.5	-5.1
Marianna	Rain	4.8	3.8	2.1	2.1	12.8
	Hist Avg	4.9	5.1	5.5	4.4	19.8
	Deviation	-0.1	-1.3	-3.3	-2.2	-7.0
DeFuniak	Rain	5.6	4.5	2.1	3.9	16.0
	Hist Avg	4.9	5.4	5.6	3.9	19.8
	Deviation	0.7	-0.9	-3.6	0.0	-3.8
Jay	Rain	3.9	3.2	2.6	3.1	12.7
	Hist Avg	5.5	5.3	6.6	4.8	22.2
	Deviation	-1.6	-2.1	-4.0	-1.8	-9.5
6 Station Average		4.8	3.3	1.8	2.6	12.5

2017 Panhandle FAWN Rainfall Jan-Apr Totals

